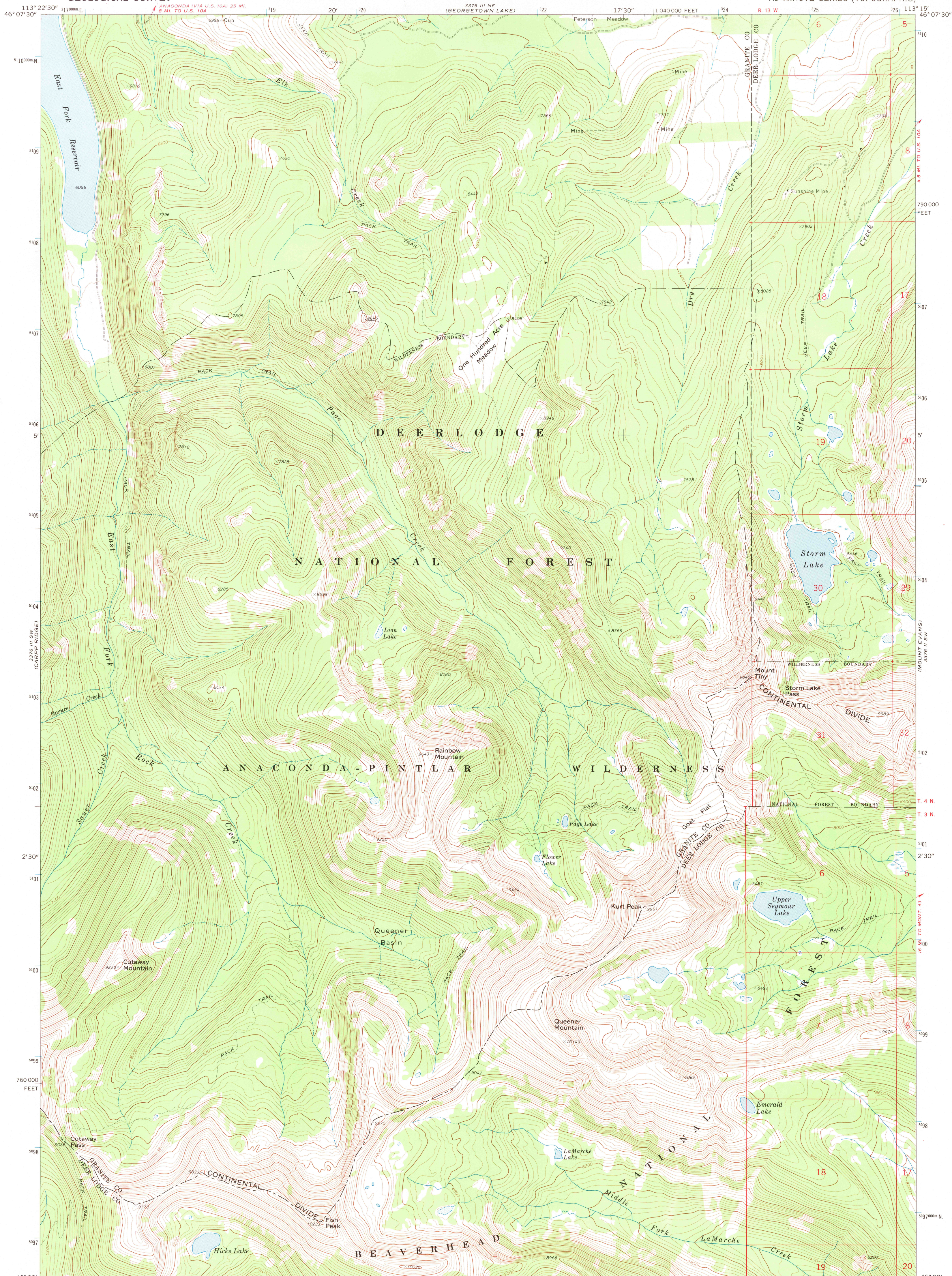
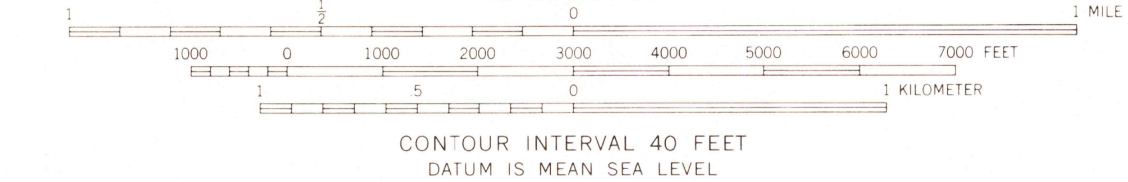
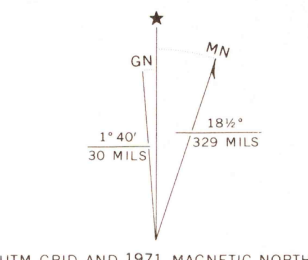


UNITED STATES
DEPARTMENT OF THE INTERIOR
GEOLOGICAL SURVEY

STORM LAKE QUADRANGLE
MONTANA
7.5 MINUTE SERIES (TOPOGRAPHIC)



Maped by the U. S. Forest Service
Edited and published by the Geological Survey
Control by USGS, USC&GS, and U. S. Forest Service
Topography by photogrammetric methods from aerial
photographs taken 1964. Field checked by USGS 1971
Polyconic projection. 1927 North American datum
10,000-foot grid based on Montana coordinate system,
south zone
1000-meter Universal Transverse Mercator grid ticks,
zone 12, shown in blue
Where omitted, land lines have not been established



ROAD CLASSIFICATION
Primary highway, hard surface
Secondary highway, hard surface
Light-duty road, hard or improved surface
Unimproved road
Interstate Route
U. S. Route
State Route

STORM LAKE, MONT.
N4600-W11315/7.5
1971

AMS 3376 III SE-SERIES V894

THIS MAP COMPLIES WITH NATIONAL MAP ACCURACY STANDARDS
FOR SALE BY U. S. GEOLOGICAL SURVEY, DENVER, COLORADO 80225, OR WASHINGTON, D. C. 20242
A FOLDER DESCRIBING TOPOGRAPHIC MAPS AND SYMBOLS IS AVAILABLE ON REQUEST

DEC 20 1973

3535