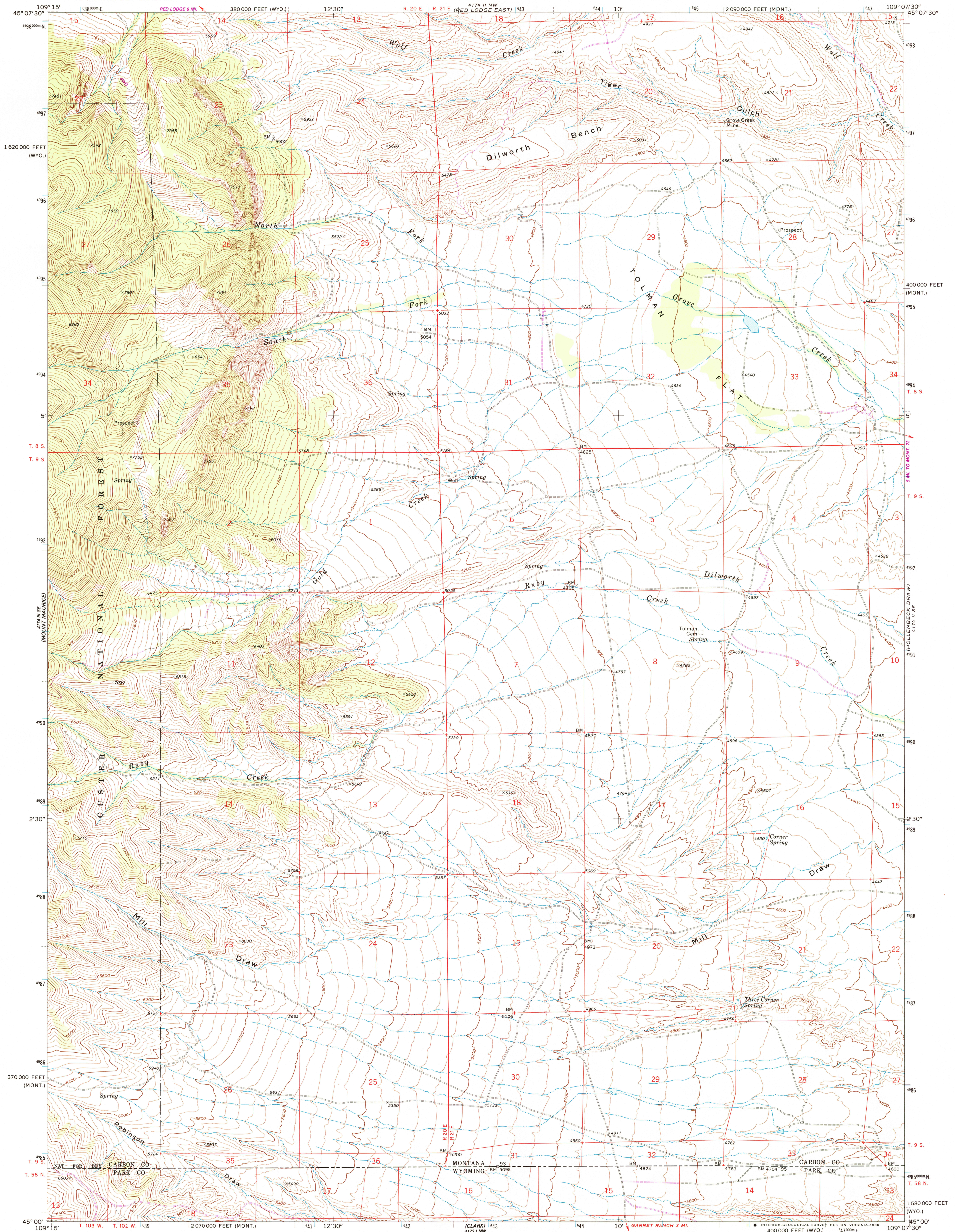


UNITED STATES  
DEPARTMENT OF THE INTERIOR  
GEOLOGICAL SURVEY

TOLMAN FLAT QUADRANGLE  
MONTANA-WYOMING  
7.5 MINUTE SERIES (TOPOGRAPHIC)



Mapped, edited, and published by the Geological Survey

Control by USGS and NOS/NOAA

Topography by photogrammetric methods from aerial photographs taken 1968. Field checked 1969

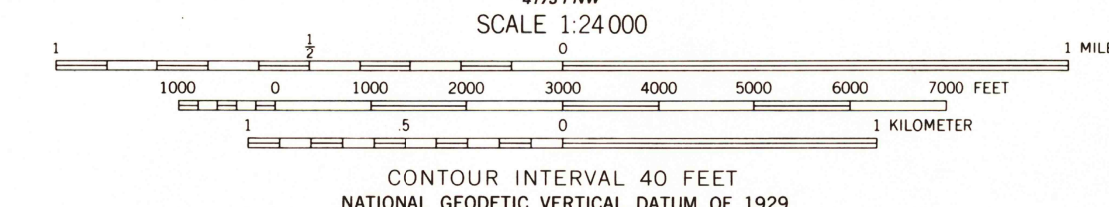
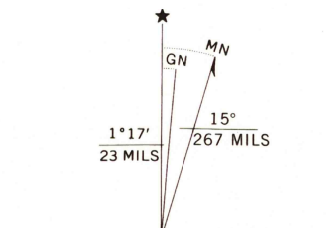
Polyconic projection. 1927 North American Datum 10,000-foot grids based on Montana coordinate system, south zone and Wyoming coordinate system, west central zone 1000-meter Universal Transverse Mercator grid ticks, zone 12, shown in blue

Fine red dashed lines indicate selected fence lines

Where omitted, land lines have not been established

To place on the predicted North American Datum 1983 move the projection lines 9 meters north and 55 meters east as shown by dashed corner ticks

Revisions shown in purple and woodland compiled from aerial photographs taken 1981 and other source data. Partial field check by U. S. Forest Service. Map edited 1985



THIS MAP COMPLIES WITH NATIONAL MAP ACCURACY STANDARDS  
FOR SALE BY U. S. GEOLOGICAL SURVEY, DENVER, COLORADO 80225, OR RESTON, VIRGINIA 22092  
A FOLDER DESCRIBING TOPOGRAPHIC MAPS AND SYMBOLS IS AVAILABLE ON REQUEST

ROAD CLASSIFICATION  
Primary highway, hard surface  
Secondary highway, hard surface  
Unimproved road  
Light-duty road, hard or improved surface  
Unimproved road  
Interstate Route  
U. S. Route  
State Route

TOLMAN FLAT, MONT.-WYO.  
45109-A2-TF-024  
1969  
PHOTOREVISED 1985  
DMA 4174 II SW-SERIES Y894

USGS NMD HISTORICAL MAP  
APR 21 1986  
REC'D FILE COPY