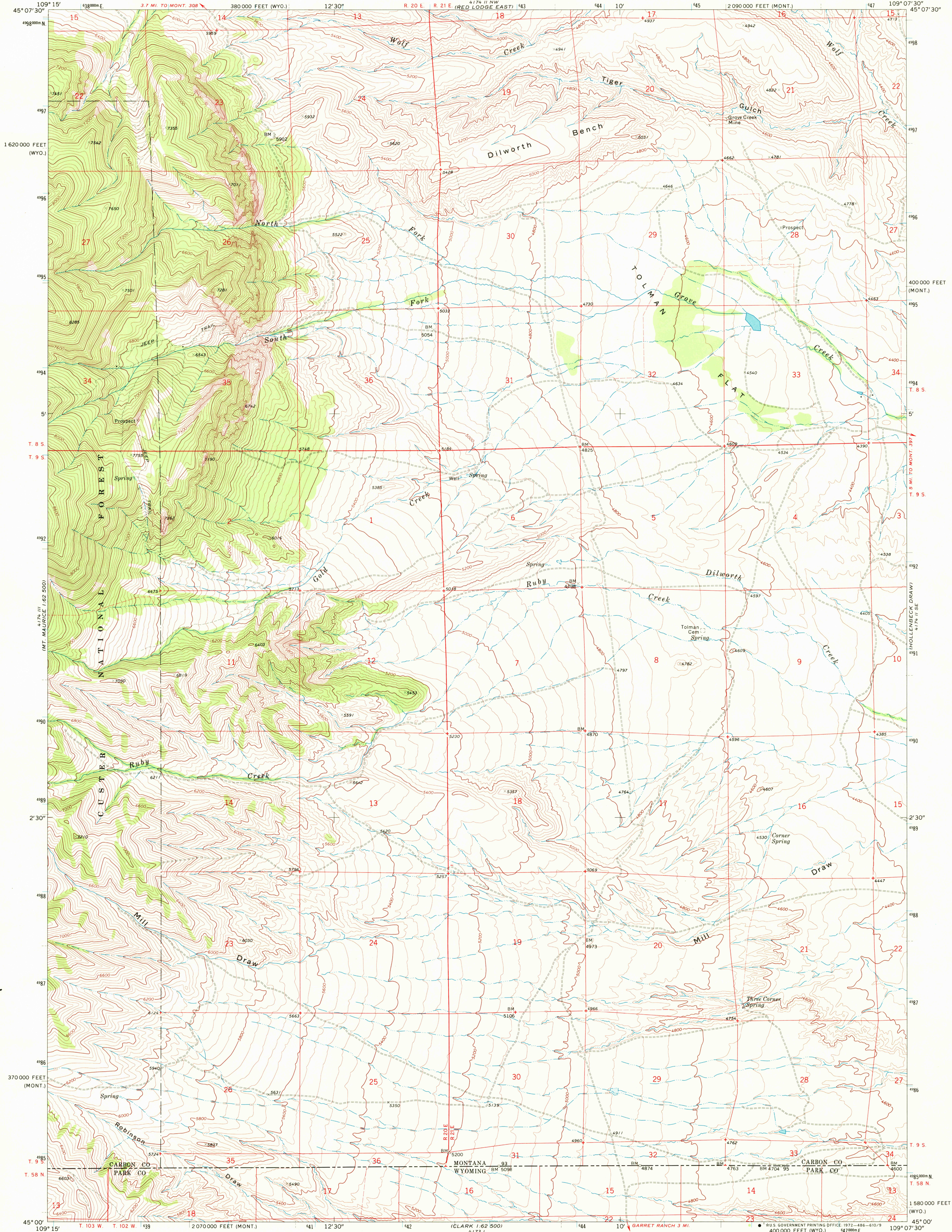
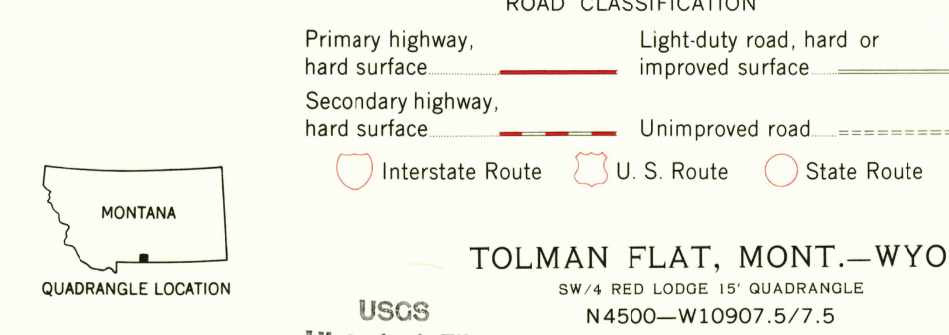
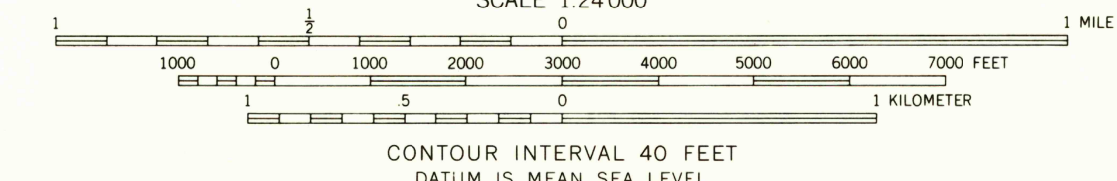
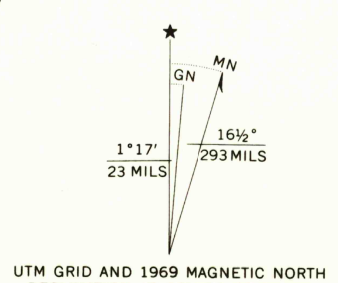


UNITED STATES
DEPARTMENT OF THE INTERIOR
GEOLOGICAL SURVEY

TOLMAN FLAT QUADRANGLE
MONTANA-WYOMING
7.5 MINUTE SERIES (TOPOGRAPHIC)
SW 1/4 RED LODGE 15' QUADRANGLE



Mapped, edited, and published by the Geological Survey
Control by USGS and USC&GS
Topography by photogrammetric methods from aerial
photographs taken 1968. Field checked 1969
Polyconic projection. 1927 North American datum
10,000-foot grids based on Montana coordinate system,
south zone and Wyoming coordinate system, west central zone
1000-meter Universal Transverse Mercator grid ticks,
zone 12, shown in blue
Fine red dashed lines indicate selected fence lines
Where omitted, land lines have not been established



TOLMAN FLAT, MONT.-WYO.
SW 1/4 RED LODGE 15' QUADRANGLE
N4500-W10907.5/7.5

THIS MAP COMPLIES WITH NATIONAL MAP ACCURACY STANDARDS
FOR SALE BY U.S. GEOLOGICAL SURVEY, DENVER, COLORADO 80225, OR WASHINGTON, D. C. 20242
A FOLDER DESCRIBING TOPOGRAPHIC MAPS AND SYMBOLS IS AVAILABLE ON REQUEST

USGS
Historical File
Topographic Division

1969

AMS 4174 II SW-SERIES V894

APR 27 1973

with
3000
50 plan