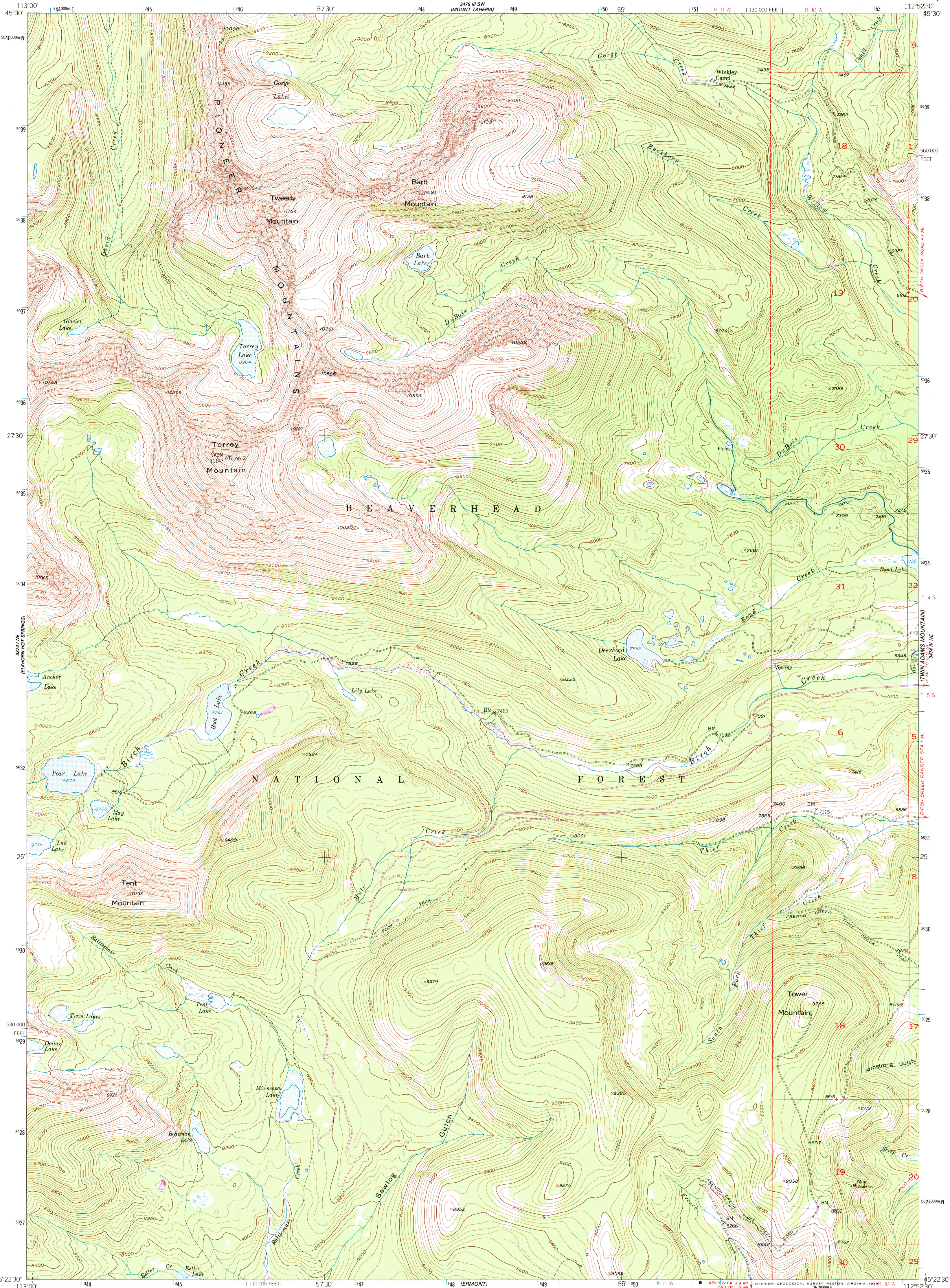


UNITED STATES
DEPARTMENT OF THE INTERIOR
GEOLOGICAL SURVEY

TORREY MOUNTAIN QUADRANGLE
MONTANA-BEAVERHEAD CO.
7.5 MINUTE SERIES (TOPOGRAPHIC)



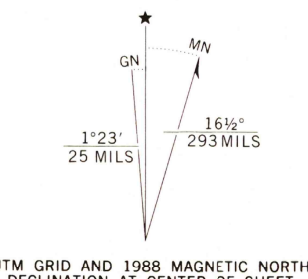
Mapped, edited, and published by the Geological Survey
Control by USGS and NOS/NOAA

Topography from aerial photographs by multiplex methods
Aerial photographs taken 1950. Field check 1952

Polyconic projection: 1927 North American Datum
10,000-foot grid based on Montana coordinate system,
south zone

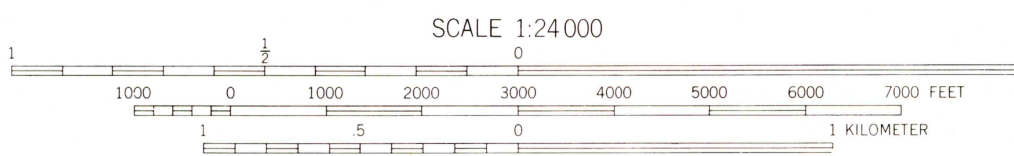
Dashed land lines indicate approximate locations
1000-meter Universal Transverse Mercator grid ticks,
zone 12, shown in blue

To place on the predicted North American Datum 1983
move the projection lines 12 meters north and
68 meters east as shown by dashed corner ticks
There may be private inholdings within the boundaries
of the National or State reservations shown on this map



UTM GRID AND 1983 MAGNETIC NORTH
DECLINATION AT CENTER OF SHEET

Revisions shown in purple and woodland
compiled from aerial photographs taken 1984
and other source data. Partial field check
by U.S. Forest Service. Map edited 1988



CONTOUR INTERVAL 40 FEET
NATIONAL GEODETIC VERTICAL DATUM OF 1929
THIS MAP COMPLIES WITH NATIONAL MAP ACCURACY STANDARDS
FOR SALE BY U.S. GEOLOGICAL SURVEY
DENVER, COLORADO 80225, OR RESTON, VIRGINIA 22092
A FOLDER DESCRIBING TOPOGRAPHIC MAPS AND SYMBOLS IS AVAILABLE ON REQUEST



ROAD CLASSIFICATION
Heavy-duty 4 LANE 6 LANE Light-duty
Medium-duty 4 LANE 6 LANE Unimproved dirt
U.S. Route State Route

TORREY MOUNTAIN, MONT
45112-D8-TF-024

1952
PHOTOREVISED 1988
DMA 3474 IV NW-SERIES V894

USGS NMD HISTORICAL MAP

MAY 05 1989

REC'D FILE COPY