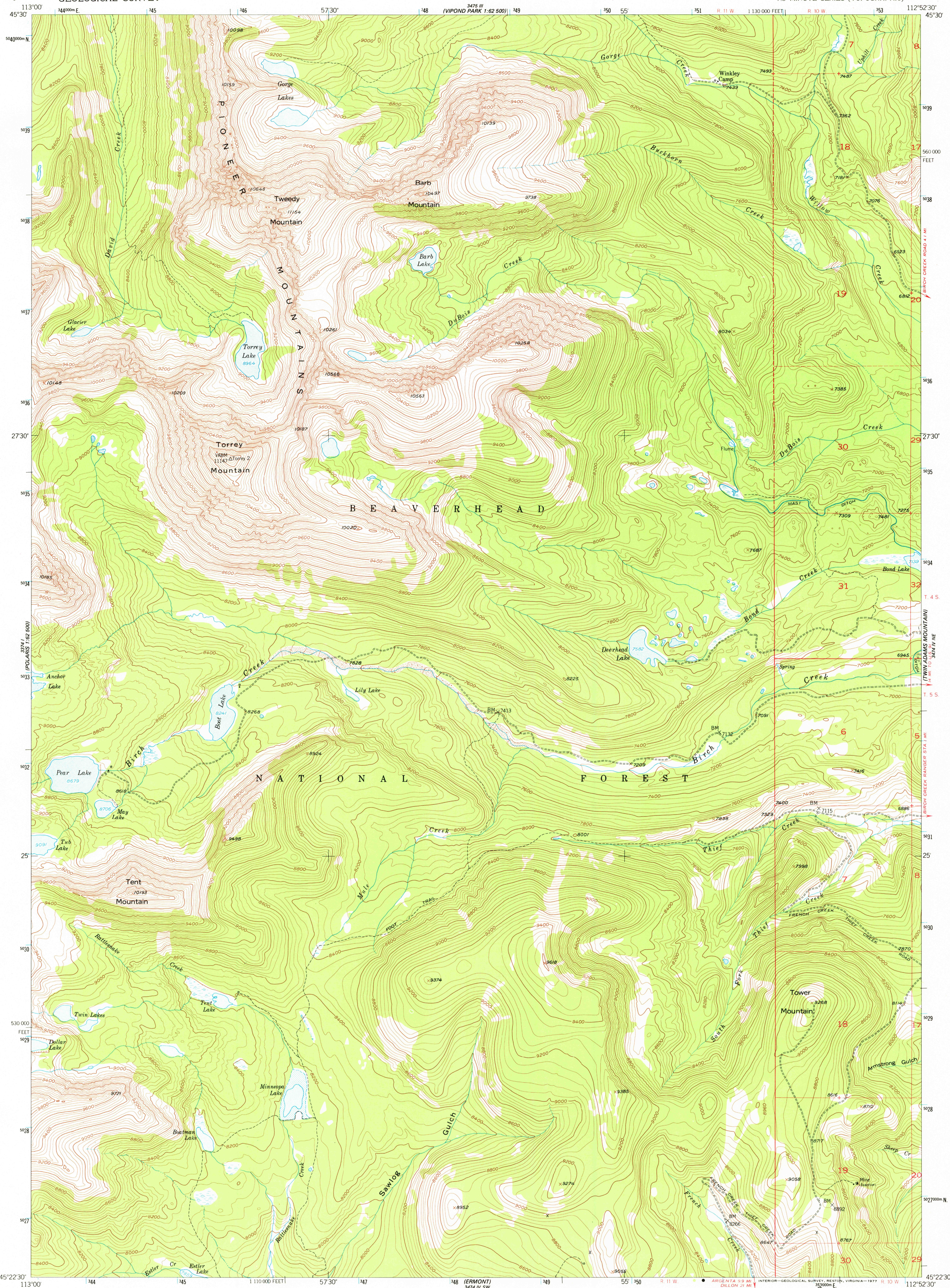
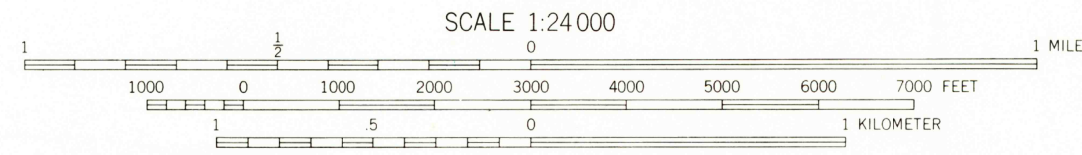
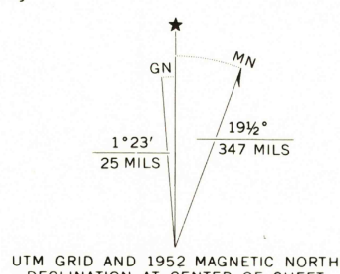


UNITED STATES
DEPARTMENT OF THE INTERIOR
GEOLOGICAL SURVEY

TORREY MOUNTAIN QUADRANGLE
MONTANA-BE AVERHEAD CO.
7.5 MINUTE SERIES (TOPOGRAPHIC)



Maped, edited, and published by the Geological Survey
Control by USGS and USC&GS
Topography from aerial photographs by multiplex methods
Aerial photographs taken 1950. Field check 1952
Polyconic projection. 1927 North American datum
10,000-foot grid based on Montana coordinate system,
south zone
Dashed land lines indicate approximate locations
1000-meter Universal Transverse Mercator grid ticks,
zone 12, shown in blue
Map photoinspected 1976
No major culture or drainage changes observed



THIS MAP COMPLIES WITH NATIONAL MAP ACCURACY STANDARDS
FOR SALE BY U. S. GEOLOGICAL SURVEY, DENVER, COLORADO 80225, OR RESTON, VIRGINIA 22092
A FOLDER DESCRIBING TOPOGRAPHIC MAPS AND SYMBOLS IS AVAILABLE ON REQUEST



ROAD CLASSIFICATION
Heavy-duty 4 LANE 16 LANE Light-duty
Medium-duty 4 LANE 16 LANE Unimproved dirt
U. S. Route State Route

TORREY MOUNTAIN, MONT
N4522.5-W11252.5/7.5

USGS
Historical File
Topographic Division

1952
PHOTOINSPECTED 1976
AMS 3474 IV NW-SERIES V894

4300
OCT 13 1977