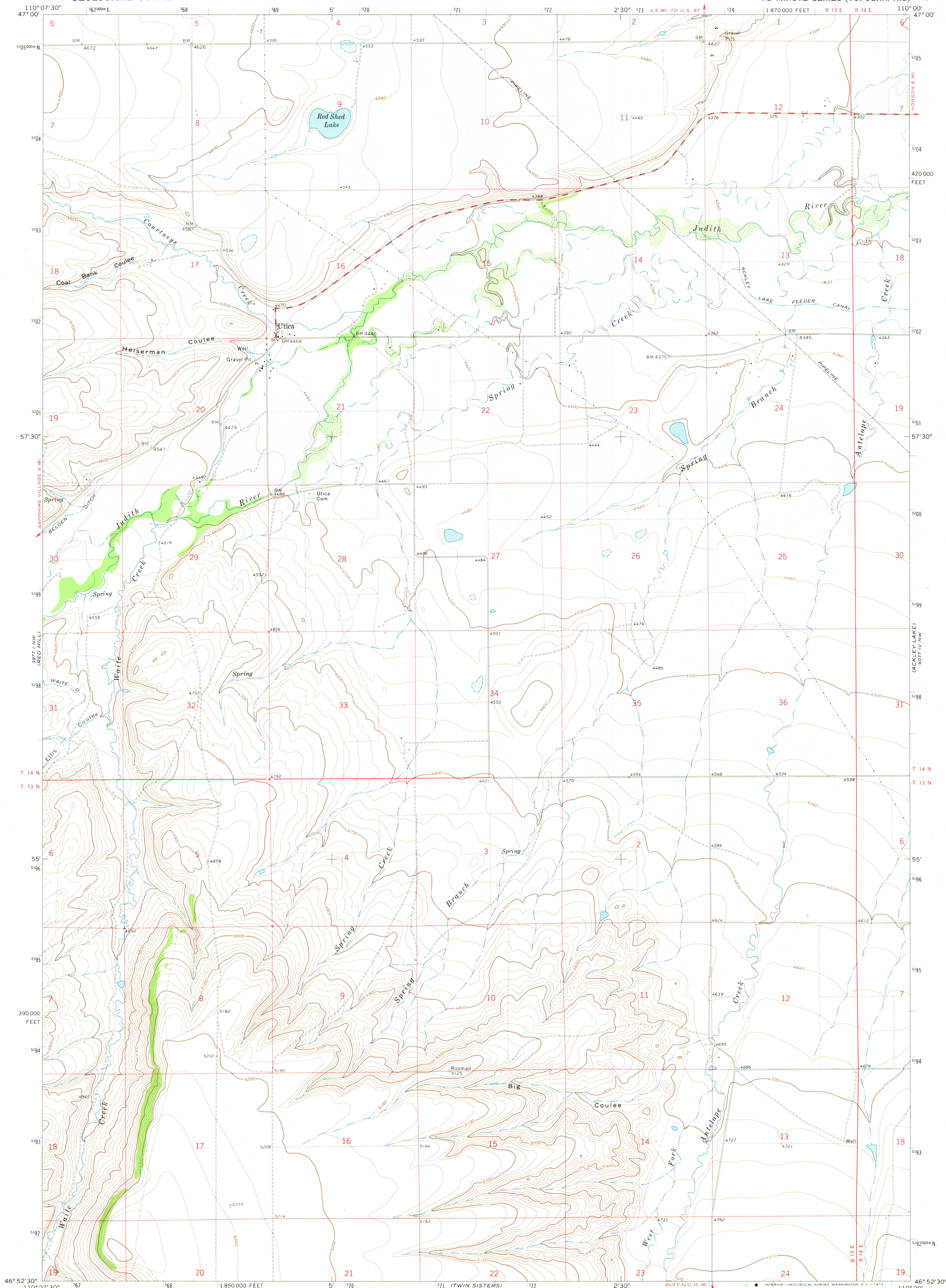


UNITED STATES  
DEPARTMENT OF THE INTERIOR  
GEOLOGICAL SURVEY

UTICA QUADRANGLE  
MONTANA—JUDITH BASIN CO.  
7.5 MINUTE SERIES (TOPOGRAPHIC)



Mapped, edited, and published by the Geological Survey

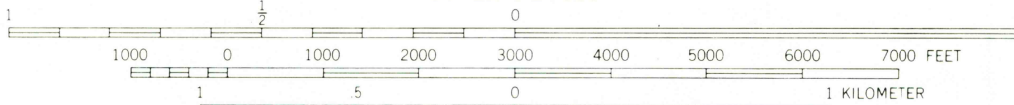
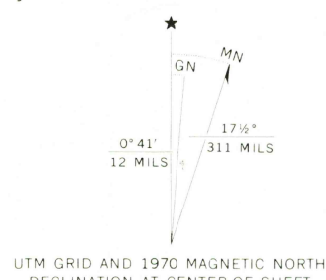
Control by USGS and USC&GS

Topography by photogrammetric methods from aerial  
photographs taken 1968. Field checked 1970

Polyconic projection. 1927 North American datum  
10,000-foot grid based on Montana coordinate system,  
central zone

1000-meter Universal Transverse Mercator grid ticks,  
zone 12, shown in blue

Fine red dashed lines indicate selected fence lines



CONTOUR INTERVAL 20 FEET  
DATUM IS MEAN SEA LEVEL



ROAD CLASSIFICATION	
Primary highway, hard surface	Light-duty road, hard or improved surface
Secondary highway, hard surface	Unimproved road
Interstate Route	U. S. Route
	State Route

UTICA, MONT.  
N4652.5-W11000/7.5  
1970

AMS 3977 1 NE-SERIES V894

JAN 7 1974