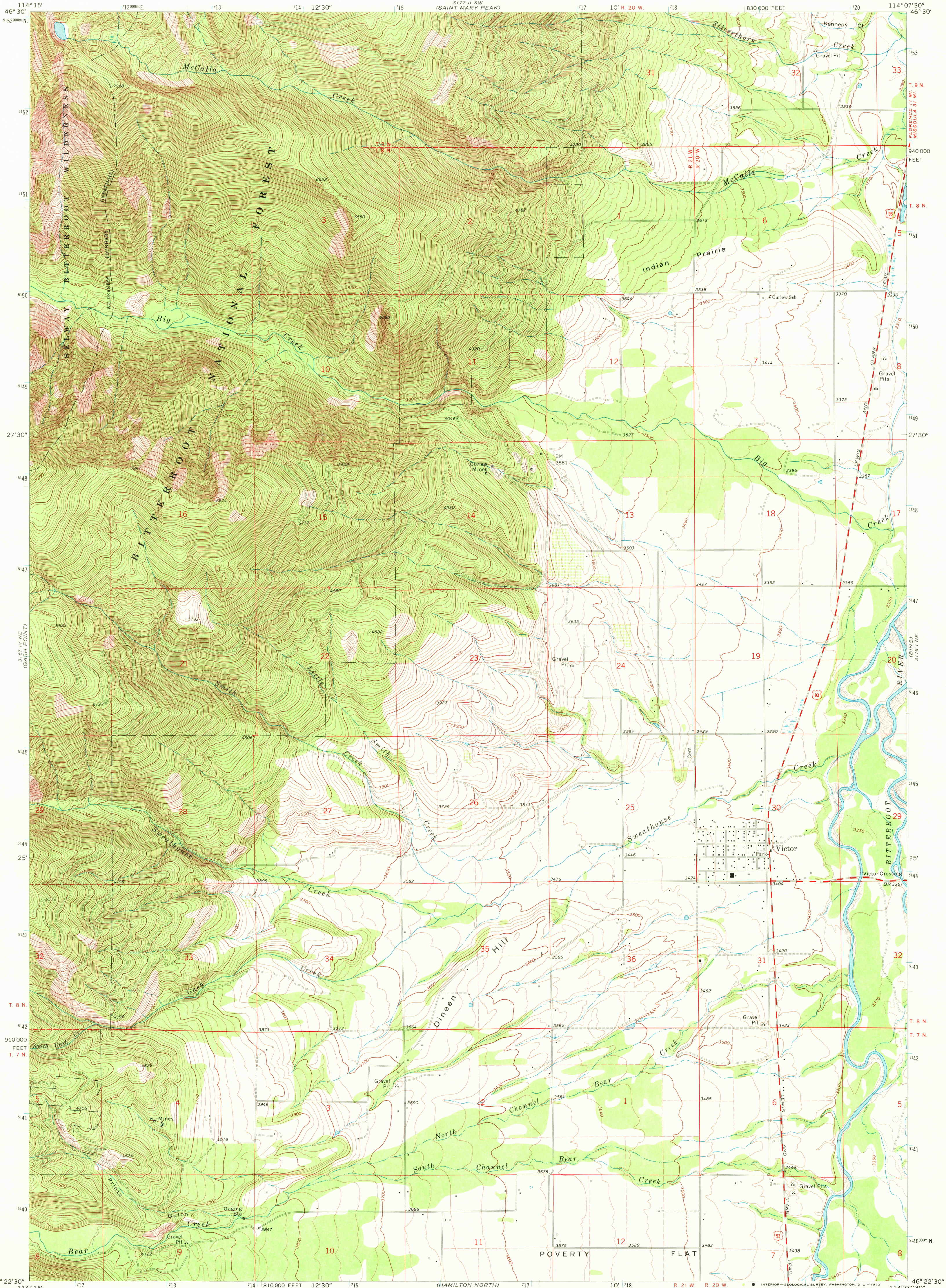


UNITED STATES
DEPARTMENT OF THE INTERIOR
GEOLOGICAL SURVEY

VICTOR QUADRANGLE
MONTANA—RAVALLI CO.
7.5 MINUTE SERIES (TOPOGRAPHIC)



Mapped, edited, and published by the Geological Survey

Control by USGS and USC&GS

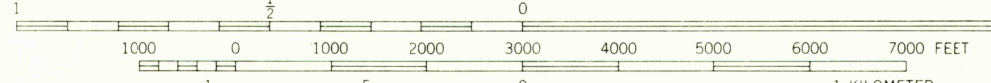
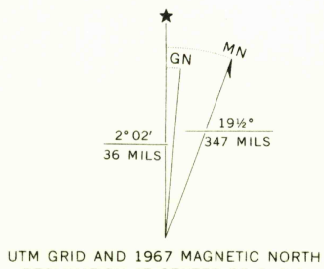
Topography by photogrammetric methods from aerial photographs taken 1966. Field checked 1967

Polyconic projection. 1927 North American datum 10,000-foot grid based on Montana coordinate system, south zone

1000-meter Universal Transverse Mercator grid ticks, zone 11, shown in blue

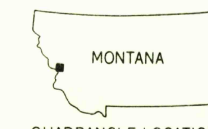
Fine red dashed lines indicate selected fence lines

Where omitted, land lines have not been established



CONTOUR INTERVAL 20 FEET
DOTTED LINES REPRESENT 10-FOOT CONTOURS
DATUM IS MEAN SEA LEVEL

ROAD CLASSIFICATION
Secondary highway, all weather, Light-duty road, all weather, improved surface
Unimproved road, fair or dry weather
U.S. Route



VICTOR, MONT.
N4622.5—W11407.5/7.5

1967

AMS 3176 I NW—SERIES V894

USGS
HISTORICAL FILE
TOPOGRAPHIC DIVISION

THIS MAP COMPLIES WITH NATIONAL MAP ACCURACY STANDARDS
FOR SALE BY U.S. GEOLOGICAL SURVEY, DENVER, COLORADO 80225, OR WASHINGTON, D.C. 20242
A FOLDER DESCRIBING TOPOGRAPHIC MAPS AND SYMBOLS IS AVAILABLE ON REQUEST