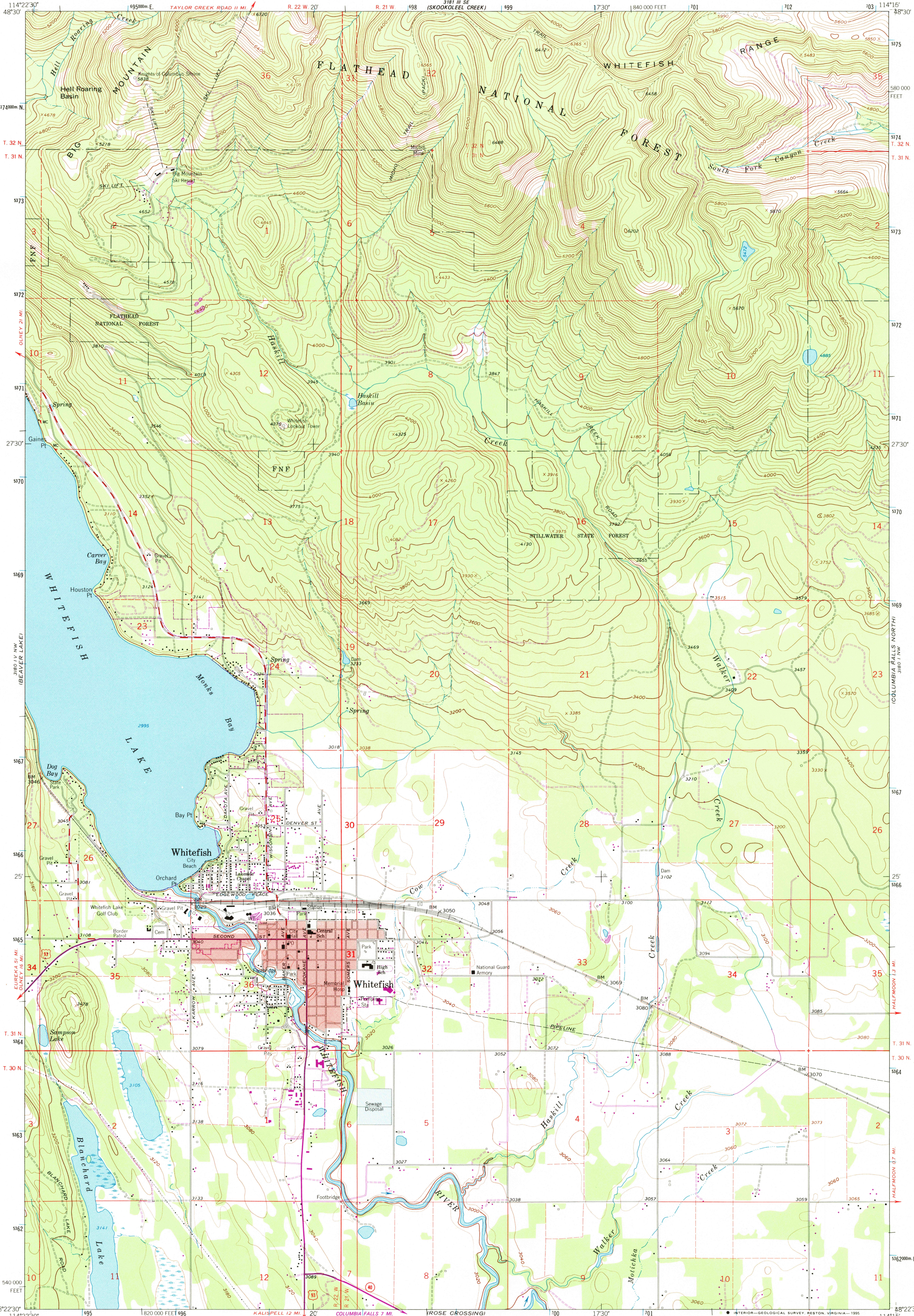


UNITED STATES
DEPARTMENT OF THE INTERIOR
GEOLOGICAL SURVEY

WHITEFISH QUADRANGLE
MONTANA-FLATHEAD CO.
7.5 MINUTE SERIES (TOPOGRAPHIC)



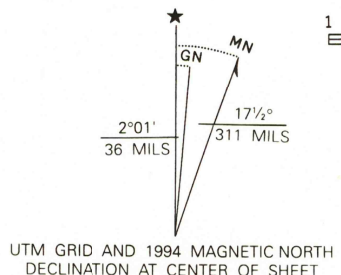
Produced by the United States Geological Survey
Control by USGS and NOS/NOAA

Compiled from imagery taken 1956. Photoinspected using
imagery dated 1991; no major culture or drainage changes
observed. PLSS and survey control current as of 1962
Boundaries verified and names revised 1994

North American Datum of 1983 (NAD 83). Projection and
1000-foot ticks: Montana Coordinate System, north zone
(Lambert Conformal Conic)
Blue 1000-meter Universal Transverse Mercator ticks, zone 11

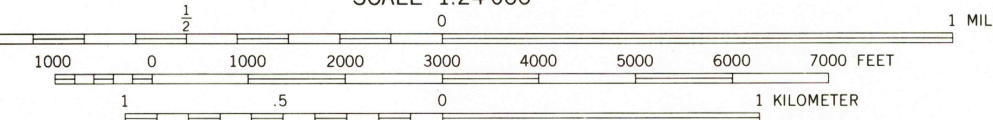
North American Datum of 1983 (NAD 83) is shown by dashed
corner ticks. The values of the shift between NAD 27 and NAD 83
for 7.5-minute intersections are obtainable from National Geodetic
Survey NADCON software

There may be private inholdings within the boundaries of the
National or State reservations shown on this map
Red tint indicates areas in which only landmark buildings are shown



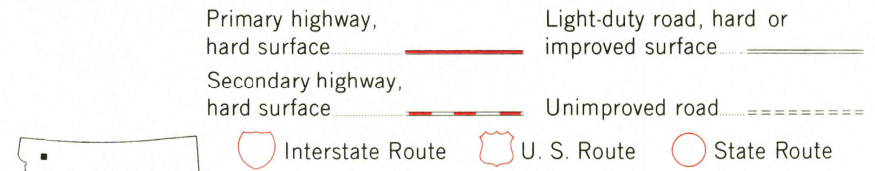
UTM GRID AND 1994 MAGNETIC NORTH
DECLINATION AT CENTER OF SHEET

Fine red dashed lines indicate selected fence lines
Where omitted, land lines have not been established



SCALE 1:24 000
CONTOUR INTERVAL 40 FEET
SUPPLEMENTARY CONTOUR INTERVAL 20 FEET
NATIONAL GEODETIC VERTICAL DATUM OF 1929

THIS MAP COMPLIES WITH NATIONAL MAP ACCURACY STANDARDS
FOR SALE BY U.S. GEOLOGICAL SURVEY
DENVER, COLORADO 80225, OR RESTON, VIRGINIA 22092
A FOLDER DESCRIBING TOPOGRAPHIC MAPS AND SYMBOLS IS AVAILABLE ON REQUEST



ROAD CLASSIFICATION
Primary highway, hard surface
Secondary highway, hard surface
Interstate Route
U.S. Route
State Route
Light-duty road, hard or improved surface
Unimproved road

QUADRANGLE LOCATION
MONTANA

WHITEFISH, MT
48114-D3-TF-024

1991
DMA 3180 IV NE-SERIES V894

