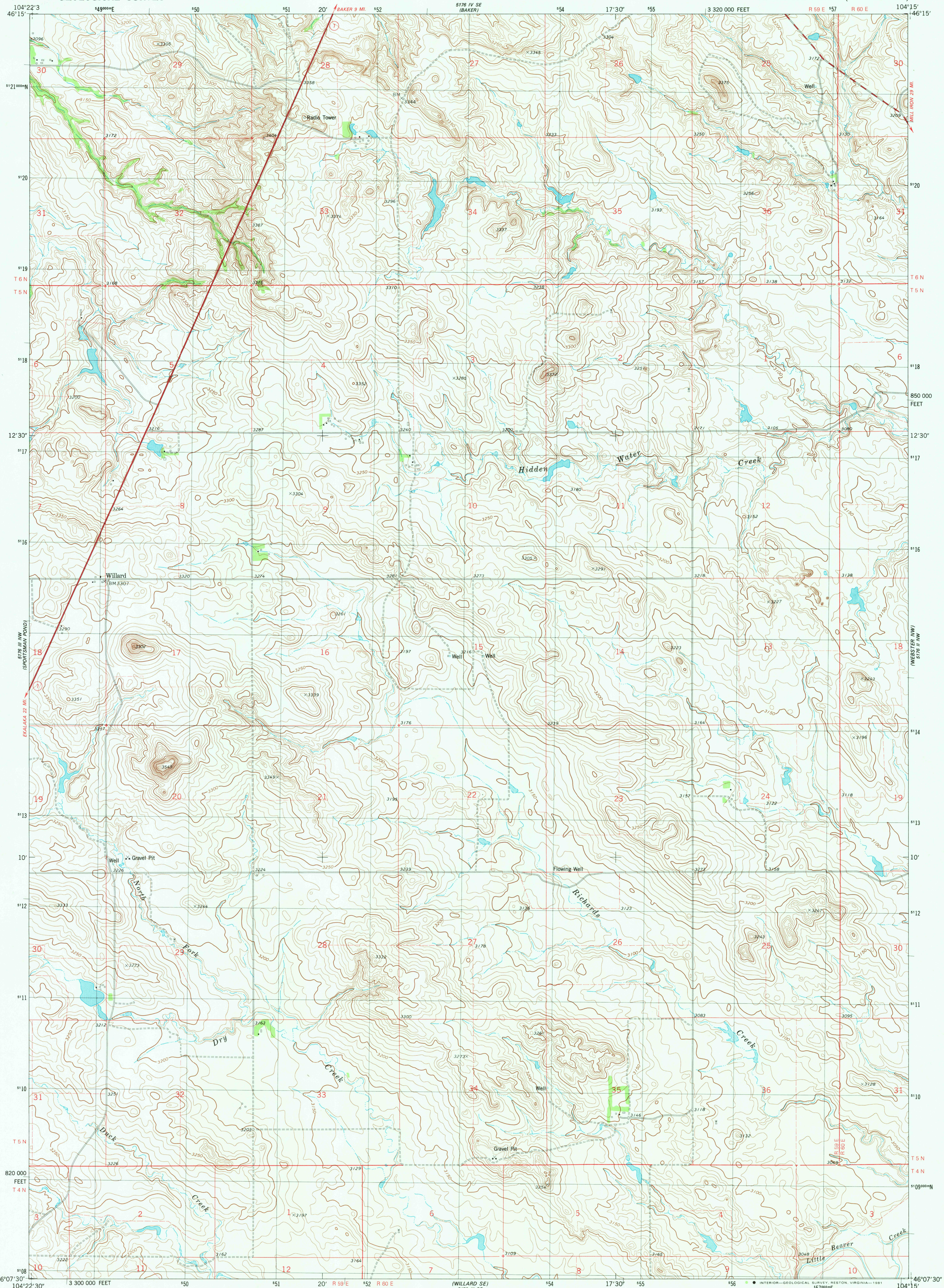


UNITED STATES
DEPARTMENT OF THE INTERIOR
GEOLOGICAL SURVEY

WILLARD QUADRANGLE
MONTANA—FALLON CO.
7.5 MINUTE SERIES (TOPOGRAPHIC)



Mapped, edited, and published by the Geological Survey

Control by USGS and NOS/NOAA

Topography by photogrammetric methods from aerial photographs taken 1974. Field checked 1976. Map edited 1981

Projection and 10,000-foot grid ticks: Montana coordinate system, south zone (Lambert conformal conic) 1000-meter Universal Transverse Mercator grid, zone 13

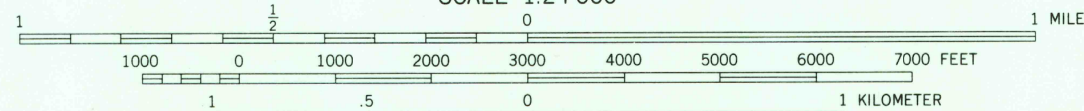
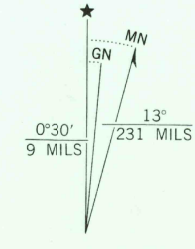
1927 North American datum

To place on the predicted North American Datum 1983

move the projection lines 4 meters north and

39 meters east as shown by dashed corner ticks

Fine red dashed lines indicate selected fence lines



CONTOUR INTERVAL 10 FEET
NATIONAL GEODETIC VERTICAL DATUM OF 1929



ROAD CLASSIFICATION	
Primary highway, hard surface	Light-duty road, hard or improved surface
Secondary highway, hard surface	Unimproved road
Interstate Route	U. S. Route
	State Route

WILLARD, MONT.
N4607.5-W10415/7.5

1981

DMA 5176 III NE-SERIES 7894

DEC 17 1981

RETURN TO:
USGS NHD HISTORICAL MAP ARCHIVES