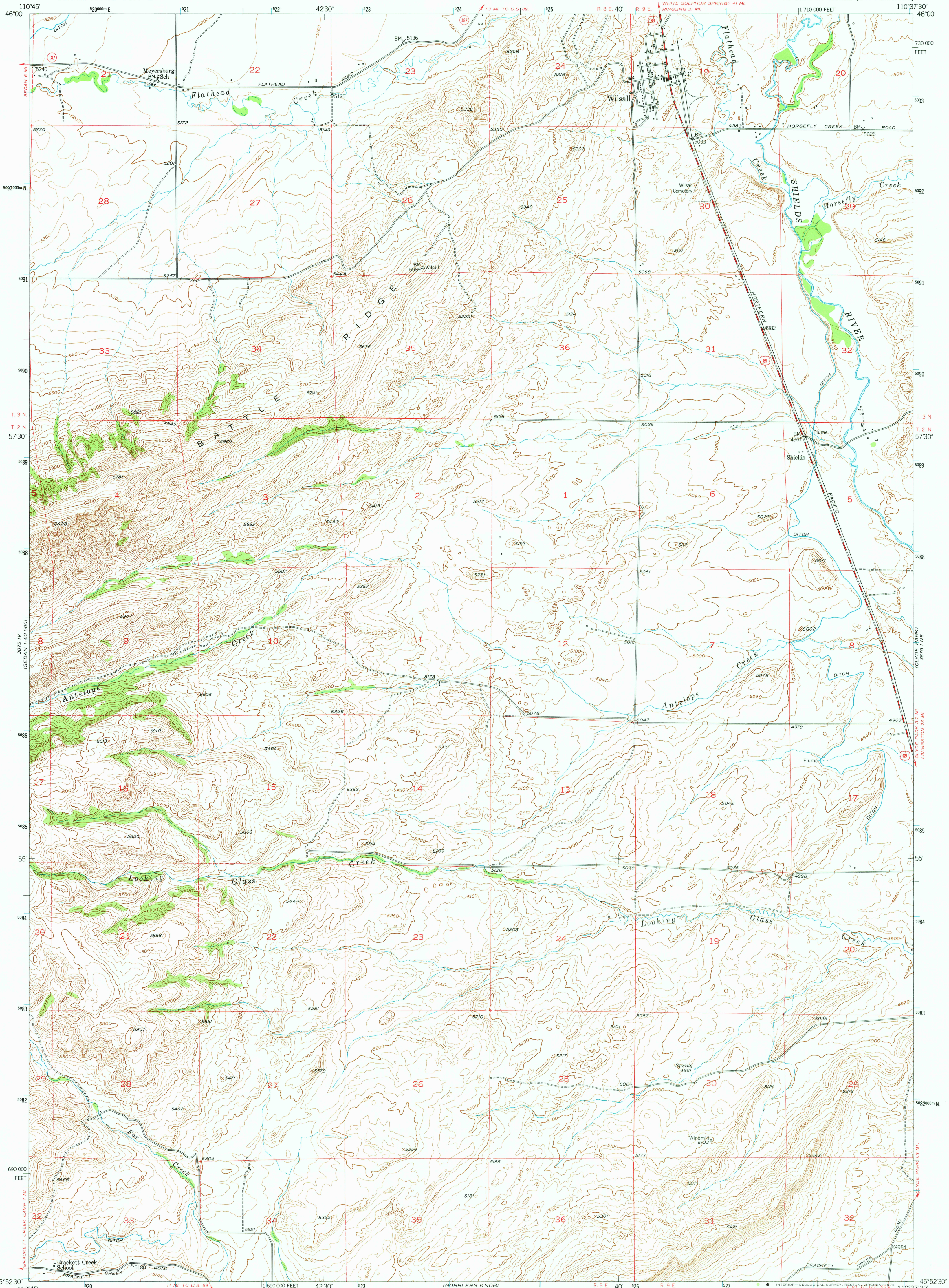
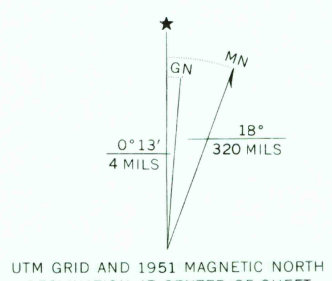


UNITED STATES
DEPARTMENT OF THE INTERIOR
GEOLOGICAL SURVEY

WILSALL QUADRANGLE
MONTANA-PARK CO.
7.5 MINUTE SERIES (TOPOGRAPHIC)



Mapped, edited, and published by the Geological Survey
as part of the Department of the Interior program
for the development of the Missouri River Basin
Control by USGS and USC&GS
Topography from aerial photographs by multiplex methods
Aerial photographs taken 1948. Field check 1951
Polyconic projection. 1927 North American Datum
10,000-foot grid based on Montana coordinate system,
south zone
Dashed land lines indicate approximate locations
1000-meter Universal Transverse Mercator grid ticks,
zone 12, shown in blue



SCALE 1:24,000
1 1000 2000 3000 4000 5000 6000 7000 FEET
1 2 3 4 5 6 7 8 9 10 KILOMETER
CONTOUR INTERVAL 20 FEET
NATIONAL GEODETIC VERTICAL DATUM OF 1929
THIS MAP COMPLIES WITH NATIONAL MAP ACCURACY STANDARDS
FOR SALE BY U. S. GEOLOGICAL SURVEY, DENVER, COLORADO 80225, OR RESTON, VIRGINIA 22092
A FOLDER DESCRIBING TOPOGRAPHIC MAPS AND SYMBOLS IS AVAILABLE ON REQUEST

ROAD CLASSIFICATION
Heavy-duty 4 LANE 16 LANE Light-duty
Medium-duty 4 LANE 16 LANE Unimproved dirt
U. S. Route State Route
QUADRANGLE LOCATION
MONTANA
WILSALL, MONT.
N4552.5-W11037.5/7.5
1951
AMS 3875 1 NW-SERIES V894

FEB 3 1975

1375