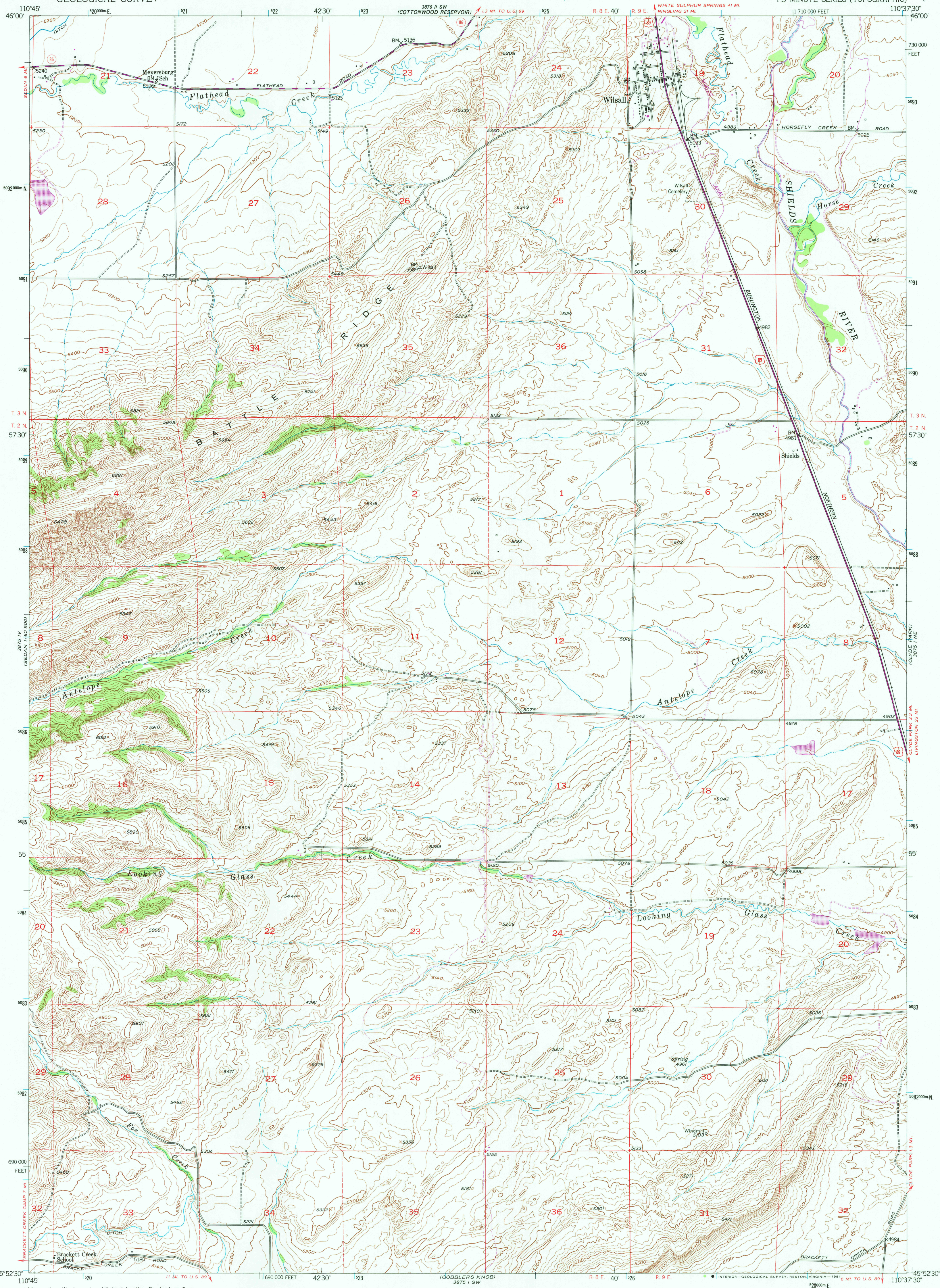


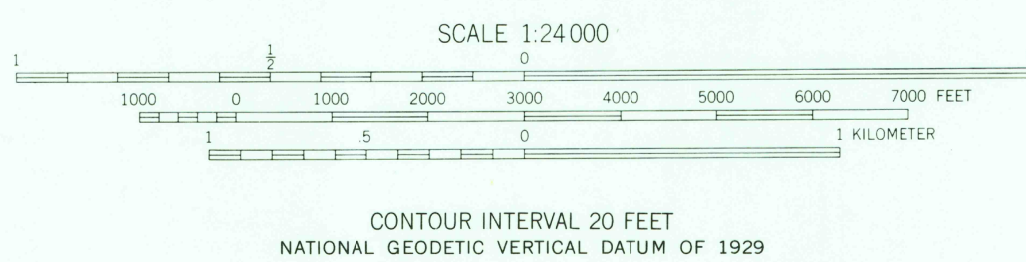
UNITED STATES
DEPARTMENT OF THE INTERIOR
GEOLOGICAL SURVEY

WILSALL QUADRANGLE
MONTANA-PARK CO.
7.5 MINUTE SERIES (TOPOGRAPHIC)



Mapped, edited, and published by the Geological Survey as part of the Department of the Interior program for the development of the Missouri River Basin Control by USGS and NOS/NOAA Topography from aerial photographs by multiplex methods Aerial photographs taken 1948. Field check 1951 Polyconic projection. 1927 North American Datum 10,000-foot grid based on Montana coordinate system, south zone Dashed land lines indicate approximate locations 1000-meter Universal Transverse Mercator grid ticks, zone 12, shown in blue

To place on the predicted North American Datum 1983 move the projection lines 10 meters north and 61 meters east as shown by dashed corner ticks



ROAD CLASSIFICATION
Heavy-duty 4 LANE 6 LANE Light-duty
Medium-duty 4 LANE 6 LANE Unimproved dirt
U. S. Route State Route



QUADRANGLE LOCATION

Revisions shown in purple compiled from aerial photographs taken 1977 and other source data. This information not field checked. Map edited 1980

USGS HISTORICAL FILE
WILSALL MONT.
N4552.5 - W11037.5/7.5
1951
PHOTOREVISED 1980
DMA 3875 1 NW-SERIES V894

2050
JUN 29 1981