

328 11 W
1:24 000
(WANDERSON MOUNTAIN)

327 11 SE
1:24 000
(CHIMNEY LAKES)

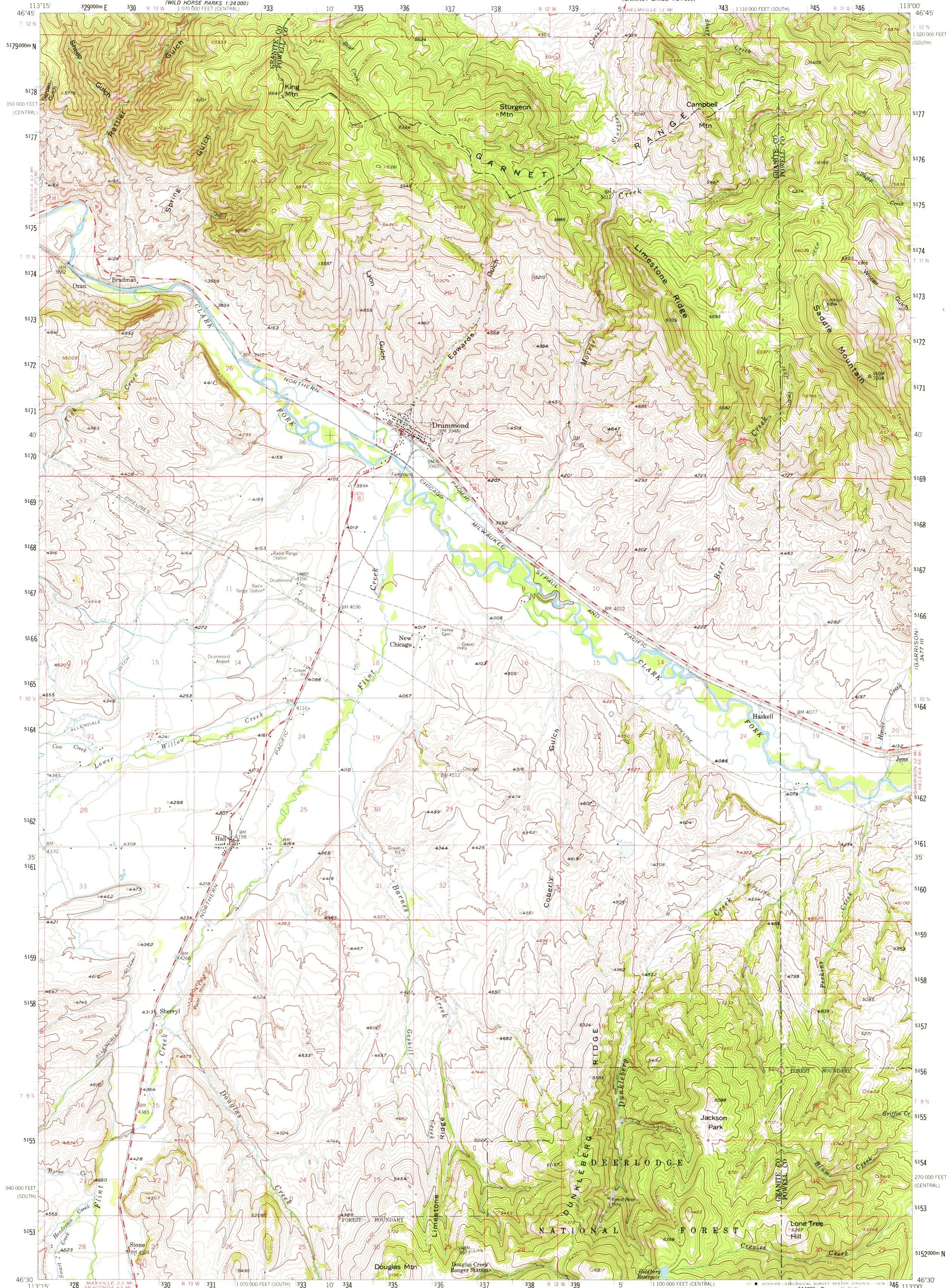
327 11 SW
1:24 000
(HELVILLE)

328 11 NE
1:24 000
(WANDERSON MOUNTAIN)

UNITED STATES
DEPARTMENT OF THE INTERIOR
GEOLOGICAL SURVEY



DRUMMOND QUADRANGLE
MONTANA
15 MINUTE SERIES (TOPOGRAPHIC)



Maped, edited, and published by the Geological Survey

Control by USGS and USC&GS

Topography from aerial photographs by photogrammetric methods

Aerial photographs taken 1954-1955. Field check 1958

Polyconic projection. 1927 North American datum

10,000-foot grid based on Montana coordinate system,

south and central zones

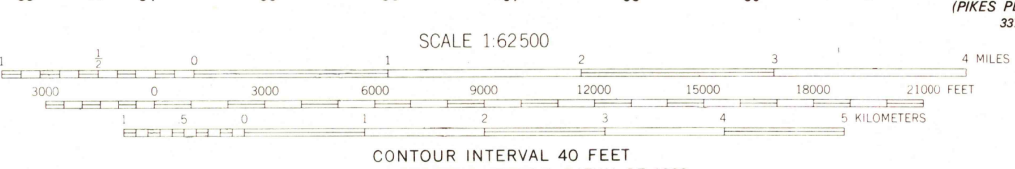
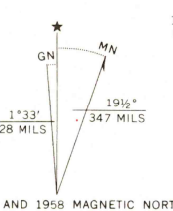
1000-meter Universal Transverse Mercator grid ticks,

zone 12, shown in blue

Land lines surveyed in part of T.9 N., R.12 W.

There may be private inholdings within the boundaries of

the National or State reservations shown on this map



CONTOUR INTERVAL 40 FEET

NATIONAL GEODETIC VERTICAL DATUM OF 1929



ROAD CLASSIFICATION
Medium-duty ——— Light-duty ———
Unimproved dirt ———
Interstate Route ——— U.S. Route ———

DRUMMOND, MONT.
N4630-W11300/15
1958

DMA 3377 II-SERIES V794

USGS
Historical File
Topographic Division

SEP 27 1979

1500