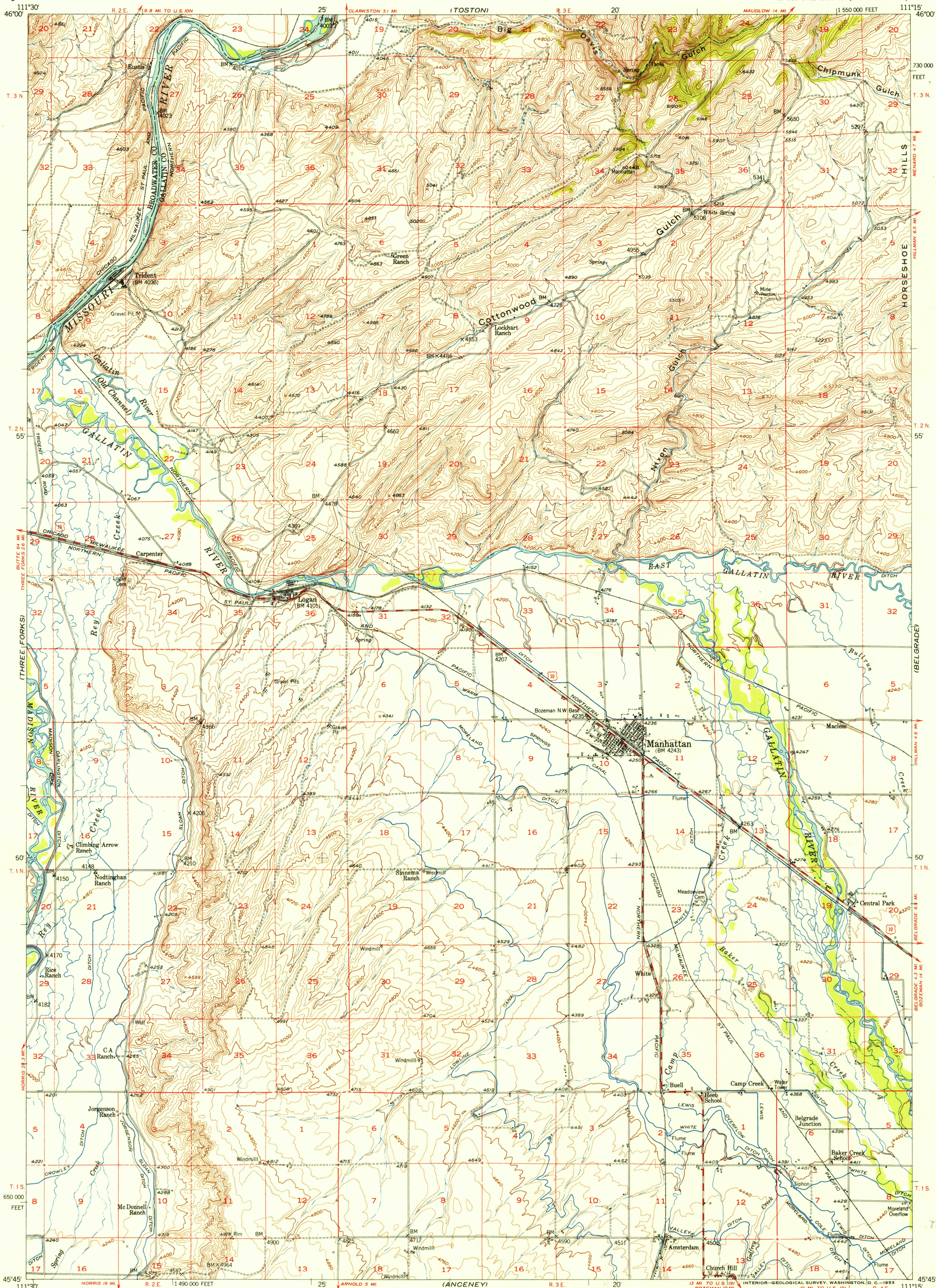


UNITED STATES
DEPARTMENT OF THE INTERIOR
GEOLOGICAL SURVEY

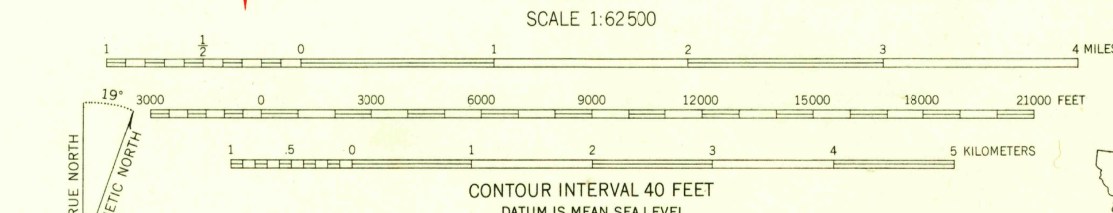
MANHATTAN QUADRANGLE
MONTANA
15 MINUTE SERIES (TOPOGRAPHIC)



Stereo compilation by Fairchild Aerial Surveys, Inc.
for the Bureau of Reclamation
Field examination and publication by the Geological Survey
as part of the Department of the Interior program for the
development of the Missouri River Basin
Control by USGS, USC&GS, and USFS
Topography from aerial photographs by stereoplanigraph methods
1948. Aerial photographs taken 1947. Field check 1949

Polyconic projection, 1927 North American datum
10,000-foot grid based on Montana coordinate system,
south zone

Dashed land lines indicate approximate locations
Unchecked elevations are shown in brown



FOR SALE BY U. S. GEOLOGICAL SURVEY, FEDERAL CENTER, DENVER, COLORADO OR WASHINGTON 25, D. C.
A FOLDER DESCRIBING TOPOGRAPHIC MAPS AND SYMBOLS IS AVAILABLE ON REQUEST

ROAD CLASSIFICATION
Heavy-duty 4 LANE 6 LANE Light-duty
Medium-duty 4 LANE 6 LANE Unimproved dirt
U. S. Route State Route

MANHATTAN, MONT.
N4545-W11115/15
1949

USGS
Historical File
Topographic Division

MAY 1 1953
2625