

HUNGRY HORSE RESERVOIR, MONTANA

30 X 60 MINUTE SERIES (TOPOGRAPHIC)



1:100 000-scale metric
topographic map of

Hungry Horse Reservoir
MONTANA

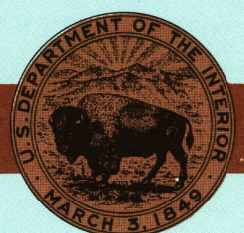


30 X 60 MINUTE QUADRANGLE
SHOWING

- Contours and elevations in meters
- Highways, roads and other manmade structures
- Water features
- Woodland areas
- Geographic names

RECEIVED
MAY 3 0 2002

USGS
HISTORICAL MAP ARCHIVES



GEOLOGICAL SURVEY

1981

Produced by the United States Geological Survey

Compiled from USGS 1:250 000-scale topographic maps dated 1958-1968. Planimetry revised from aerial photographs taken 1975 and other source data. Revised information not field checked. Map edited 1981.

Projection and 10 000-meter grid, zone 12: Universal Transverse Mercator
To place on the predicted North American Datum 1983 move the projection lines 11 meters north and 68 meters east
There may be private inholdings within the boundaries of the National or State reservations shown on this map

CONTOUR INTERVAL 50 METERS

NATIONAL GEODETIC VERTICAL DATUM OF 1929

ELEVATIONS SHOWN TO THE NEAREST METER

THIS MAP COMPLIES WITH NATIONAL MAP ACCURACY STANDARDS

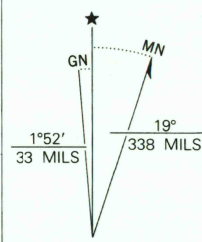
FOR SALE BY U.S. GEOLOGICAL SURVEY,
P.O. BOX 25286, DENVER, COLORADO, 80225

CONVERSION TABLE

Meters	Feet
1	3.2808
2	6.5617
3	9.8425
4	13.1234
5	16.4042
6	19.6850
7	22.9659
8	26.2467
9	29.5276
10	32.8084

To convert meters to feet
multiply by 3.2808
To convert feet to meters
multiply by 0.3048

DECLINATION DIAGRAM



UTM grid convergence
(GN) and 1981 magnetic
declination (MN)
at center of map
Diagram is approximate

ADJOINING MAPS

1	2	3
4	5	
6	7	8

- 1. Watshelli Range
- 2. Saint Mary
- 3. Cut Bank
- 4. Kallied
- 5. Valley
- 6. Poles
- 7. Swan Peak
- 8. Choteau

ISBN 0-607-30559-2



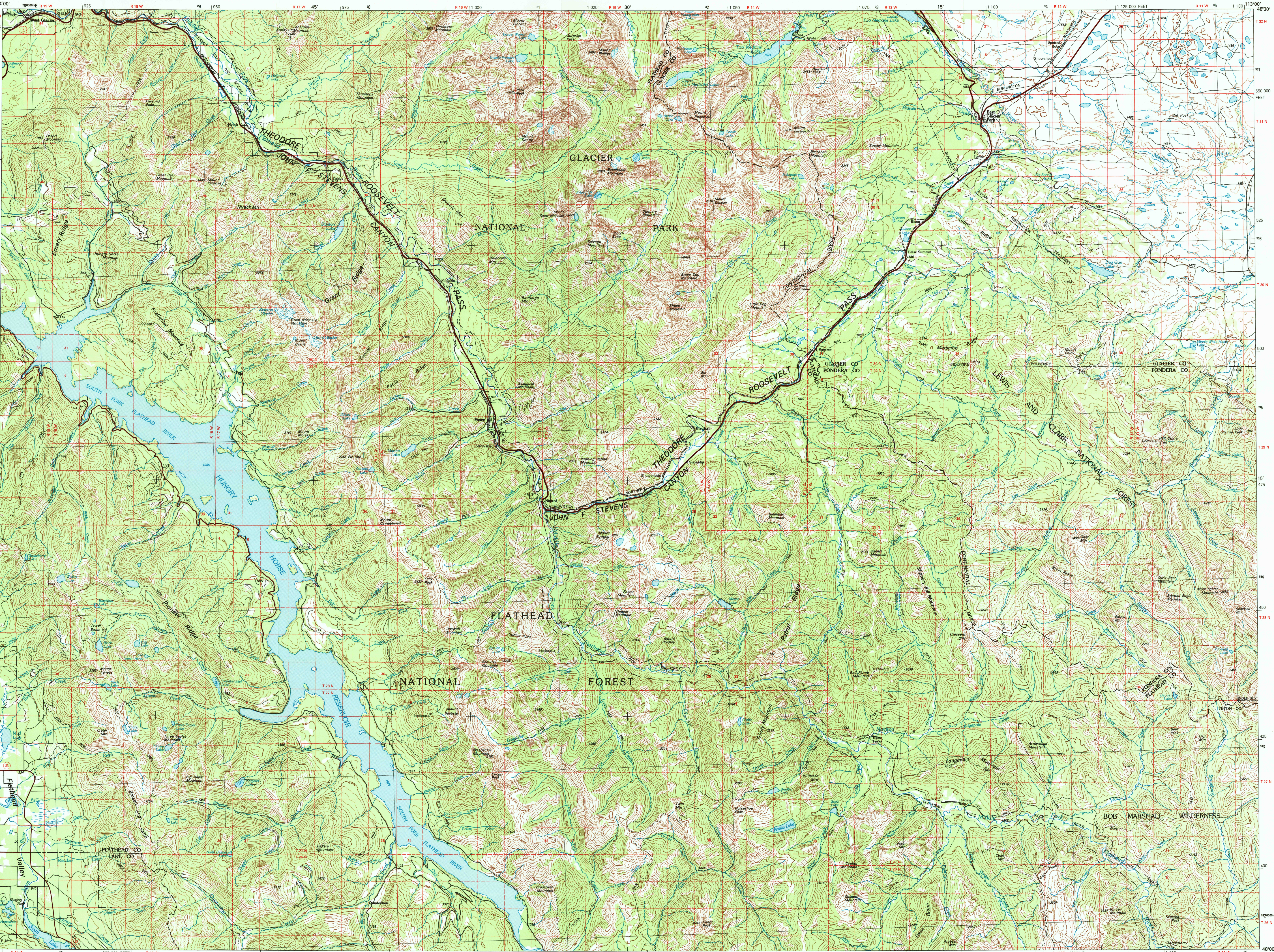
Topographic Map Symbols

- Primary highway, hard surface
- Secondary highway, hard surface
- Light duty road, principal street, hard or improved surface
- Other road or street; trail
- Route marker: Interstate, U. S., State
- Railroad: standard gauge; narrow gauge
- Bridge: overpass; underpass
- Tunnel: road, railroad
- Built up area; locality; elevation
- Airport; landing field; landing strip
- National boundary
- State boundary
- County boundary
- National or State reservation boundary
- Land grant boundary
- U. S. public lands survey: range, township, section
- Range, township; section line: protracted
- Power transmission line; pipeline
- Dam; dam with lock
- Cemetery; building
- Windmill; water well; spring
- Mine shaft; adit or cave; mine, quarry; gravel pit
- Campground; picnic area; U. S. location monument
- Ruins; cliff dwelling
- Distorted surface: strip mine, lake, sand
- Contours: index; intermediate; supplementary
- Bathymetric contours: index; intermediate
- Stream, lake; perennial; intermittent
- Rapids, large and small; falls, large and small
- Area to be submerged; marsh, swamp
- Land subject to controlled inundation; woodland
- Scrub; mangrove
- Orchard; vineyard

A pamphlet describing topographic maps is available on request



30% TOTAL RECOVERED FIBER



HUNGRY HORSE RES., MONT.
N4800-W11300/30 X 60

1981