

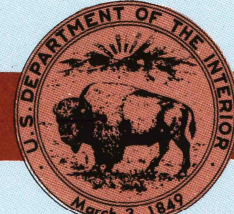
Libby  
MONTANA

1:100 000-scale metric  
topographic map



30 X 60 MINUTE QUADRANGLE  
SHOWING

- Contours and elevations in meters
- Highways, roads and other manmade structures
- Water features
- Woodland areas
- Geographic names



GEOLOGICAL SURVEY

1978  
PHOTOINSPECTED 1991

Produced by the United States Geological Survey

Compiled from USGS 1:24 000 and 1:62 500-scale topographic maps dated 1963-1966. Planimetry revised from aerial photographs taken 1976-77 and other source data. Revised information not field checked. Map edited 1978

1927 North American Datum (NAD 27). Projection and 10 000-meter grid: Universal Transverse Mercator, zone 11 25 000-foot ticks: Montana coordinate system, north and central zones

The difference between NAD 27 and North American Datum of 1983 (NAD 83) is too small to show at this scale. The values of the shift between the datums for 7.5-minute intersections are given in USGS Bulletin 1875

There may be private inholdings within the boundaries of the National or State reservations shown on this map

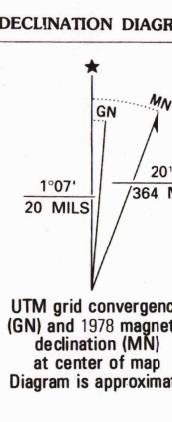
Protracted land lines are dashed  
Map photoinspected using 1990-91 photographs  
No major culture or drainage changes found

CONTOUR INTERVAL 50 METERS  
NATIONAL GEODETIC VERTICAL DATUM OF 1929  
ELEVATIONS SHOWN TO THE NEAREST METER

THIS MAP COMPLIES WITH NATIONAL MAP ACCURACY STANDARDS

CONVERSION TABLE	
Meters	Feet
1	3.2808
2	6.5617
3	9.8425
4	13.1234
5	16.4042
6	19.6850
7	22.8659
8	26.1467
9	29.3776
10	32.8084

To convert meters to feet  
multiply by 3.2808  
To convert feet to meters  
multiply by 0.3048



UTM grid convergence (GN) and 1978 magnetic declination (MN) at center of map  
Diagram is approximate

ADJOINING MAPS		
1	2	3
4	5	6
7	8	

- 1 Bonners Ferry
- 2 Yaak River
- 3 Whitefish Range
- 4 Sandpoint
- 5 Kalispell
- 6 Coeur D'Alene
- 7 Thompson Falls
- 8 Polson

FOR SALE BY U. S. GEOLOGICAL SURVEY, DENVER, COLORADO 80225  
OR RESTON, VIRGINIA 22092



Topographic Map Symbols

- Primary highway, hard surface
- Secondary highway, hard surface
- Light duty road, principal street, hard or improved surface
- Other road or street; trail
- Route marker: Interstate, U. S., State
- Railroad: standard gage; narrow gage
- Bridge: overpass; underpass
- Tunnel: road, railroad
- Built up area; locality; elevation
- Airport; landing field; landing strip
- National boundary
- State boundary
- County boundary
- National or State reservation boundary
- Land grant boundary
- U. S. public lands survey: range, township, section
- Range, township, section line; protracted
- Power transmission line; pipeline
- Dam; dam with lock
- Cemetery; building
- Windmill; water well; spring
- Mine shaft; adit or cave; mine, quarry; gravel pit
- Campground; picnic area; U. S. location monument
- Rail; adit; ledge; survey; range, township, section
- Disturbed surface: strip mine, lava, sand
- Contours: index; intermediate; supplementary
- Bathymetric contours: index; intermediate
- Stream, lake: perennial; intermittent
- Rapids, large and small; falls, large and small
- Area to be submerged; marsh, swamp
- Land subject to controlled inundation; woodland
- Scrub; mangrove
- Orchard; vineyard

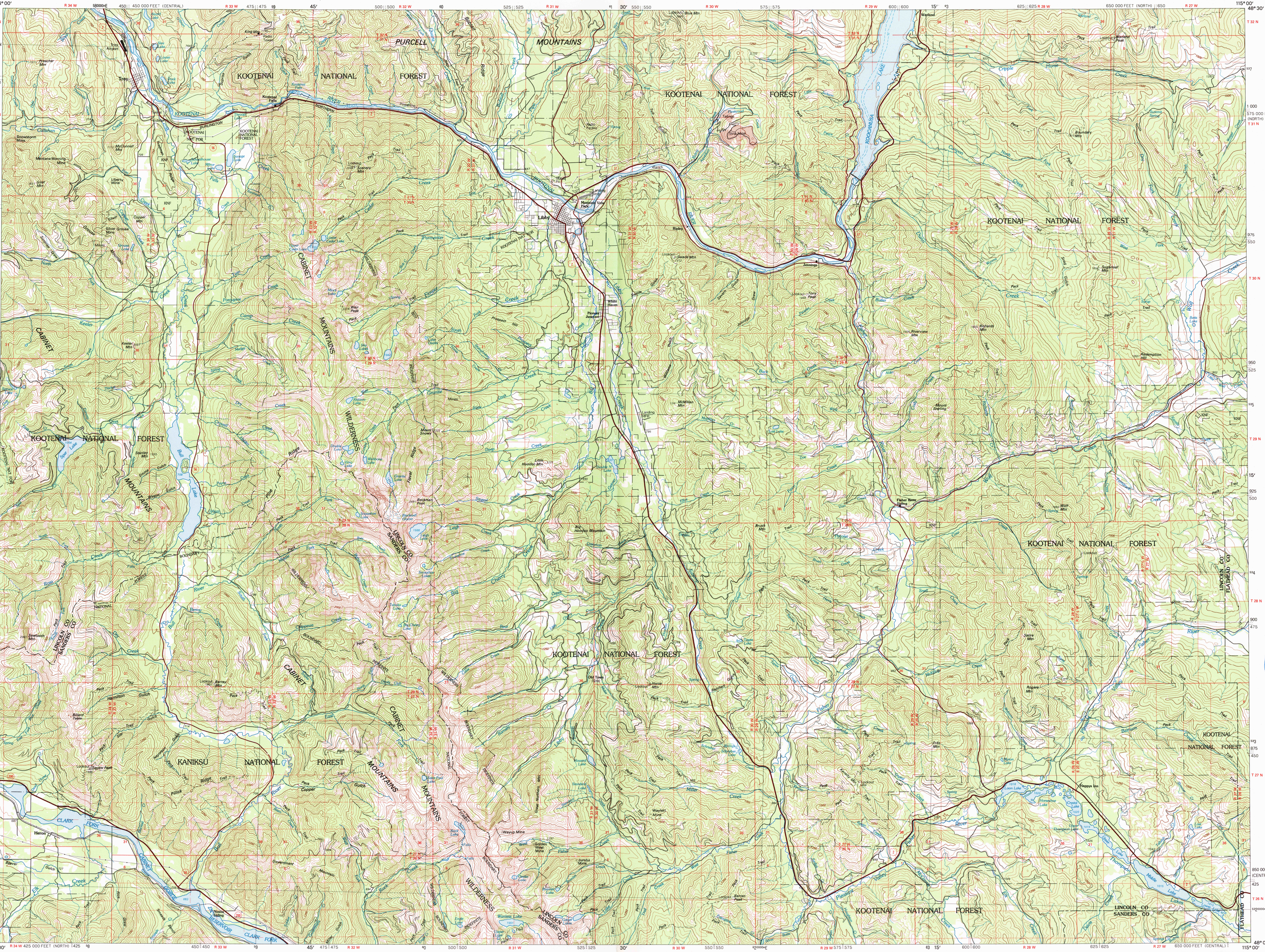
A pamphlet describing topographic maps is available on request

LIBBY, MONTANA

48115-A1-TM-100

1978

PHOTOINSPECTED 1991



INTERIOR-GEOLOGICAL SURVEY, RESTON, VIRGINIA-1993

KILOMETERS 1 0 1 2 3 4 5 6 7 8 9 10 11 12

SCALE 1:100 000

1 CENTIMETER ON THE MAP REPRESENTS 1 KILOMETER ON THE GROUND

CONTOUR INTERVAL 50 METERS

1000 0 5000 10 000 METERS

1 CENTIMETER ON THE MAP REPRESENTS 1 KILOMETER ON THE GROUND

CONTOUR INTERVAL 50 METERS

MILES 1 0 1 2 3 4 5 6 7 8

1 CENTIMETER ON THE MAP REPRESENTS 1 KILOMETER ON THE GROUND

CONTOUR INTERVAL 50 METERS