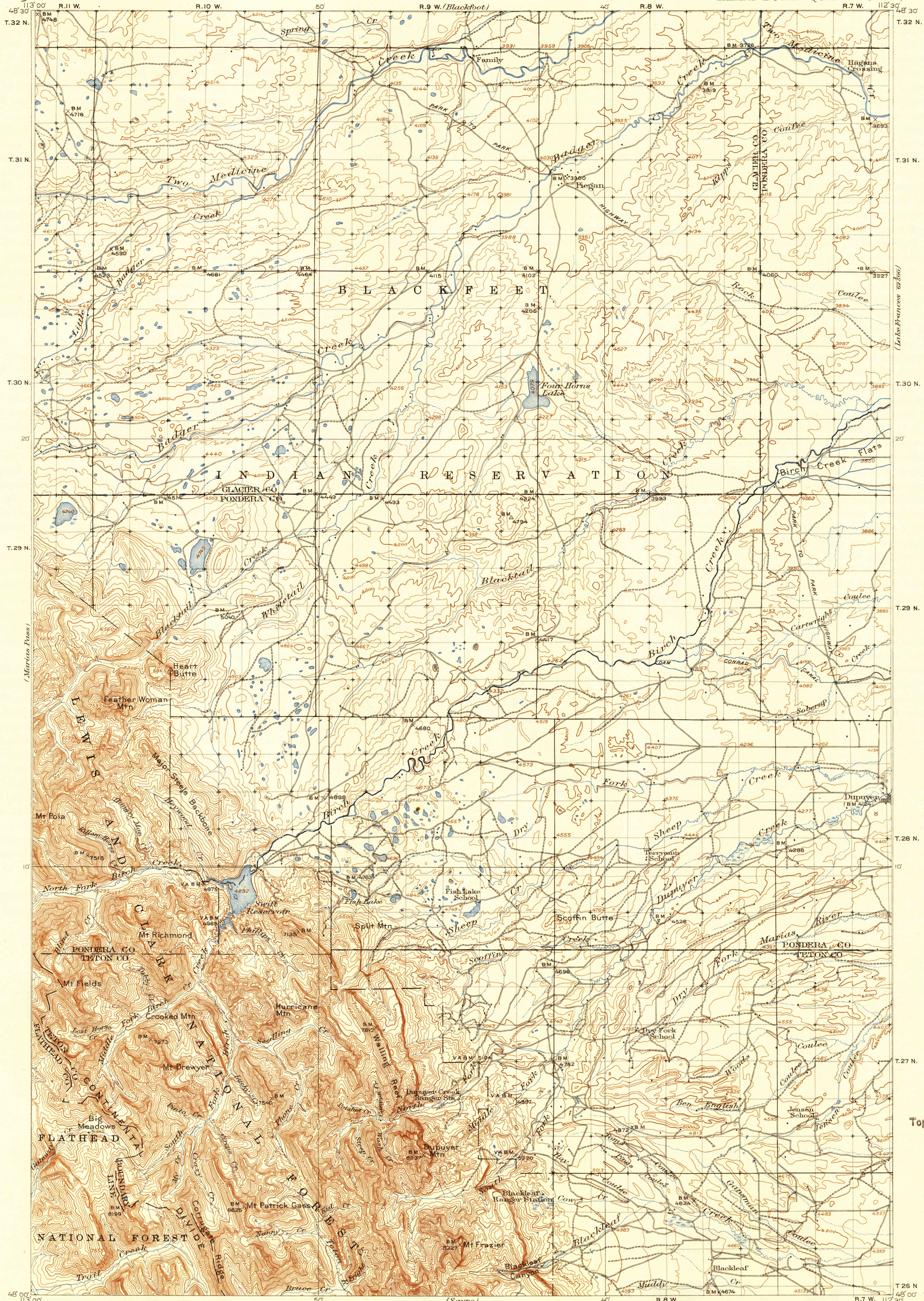


UNITED STATES
DEPARTMENT OF THE INTERIOR
GEOLOGICAL SURVEY

U. S. G. S.
FILE COPY
Inspection and Editing.

MONTANA
HEART BUTTE QUADRANGLE



R.B. Marshall, Chief Geographer.
Sledge Tatum, Geographer in charge.
Topography by General Land Office, R.T. Evans,
O.H. Nelson, and D.H. Watson.
Control by H.L. Baldwin and G.H. Kendall.
Surveyed in 1907 and 1914.

Scale 1:25000
0 1 2 3 4 5 Miles
0 1 2 3 4 5 Kilometers
Contour interval 100 feet.
Datum is mean sea level.

TRUE NORTH
MAGNETIC NORTH
APPROXIMATE MEAN
DECLINATION 1914.

Edition of 1918, reprinted 1942
Polyconic projection.

MONT.
HEART BUTTE

N4800-W11230/3 JUL 22 1942

U. S. G. S.
FILE COPY
Inspection and Editing.

USCS
Historical File
Topographic Division

1955