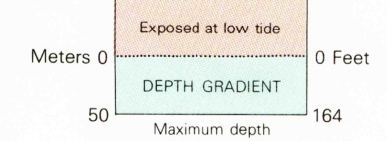
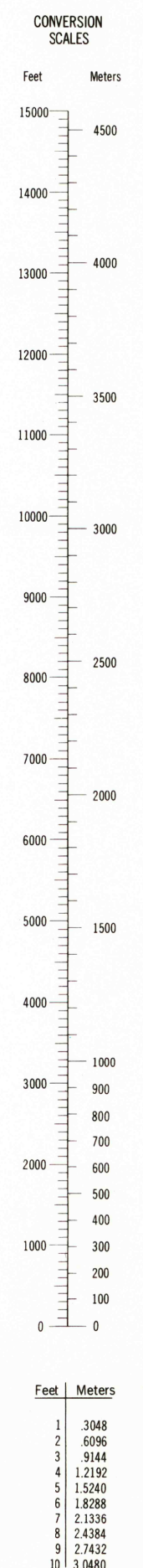
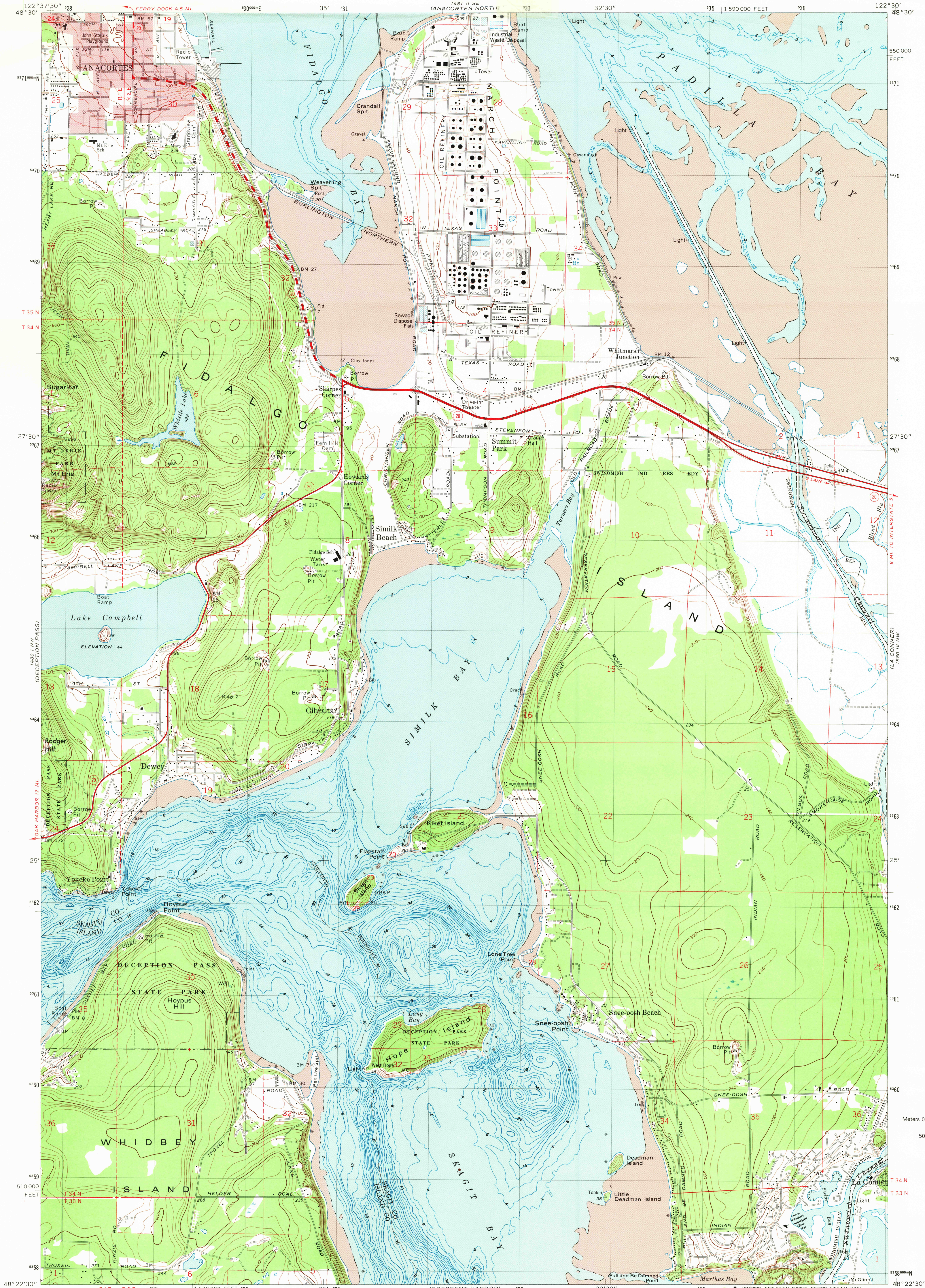


UNITED STATES  
DEPARTMENT OF THE INTERIOR  
GEOLOGICAL SURVEY

ANACORTES SOUTH QUADRANGLE  
WASHINGTON  
7.5 MINUTE SERIES (TOPOGRAPHIC-BATHYMETRIC)  
NE/4 DECEPTION PASS 15' QUADRANGLE

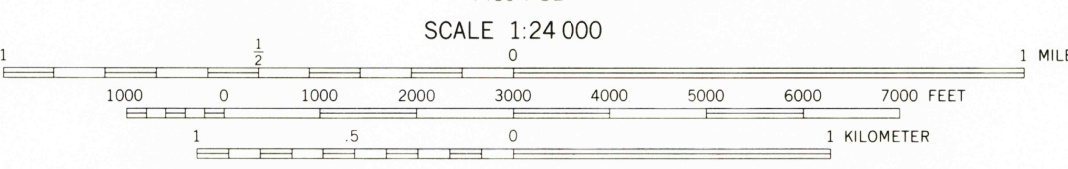


Mapped, edited, and published by the Geological Survey and the National Ocean Survey  
Control by USGS and NOS/NOAA  
Topography by photogrammetric methods from aerial photographs taken 1972. Field checked 1973. Map edited 1978  
Bathymetry compiled by the National Ocean Survey from tide-coordinated hydrographic surveys. This information is not intended for navigational purposes  
Mean lower low water (dotted) line and mean high water (solid) line compiled by NOS from tide-coordinated aerial photographs  
Projection and 10,000-foot grid ticks: Washington coordinate system, north zone (Lambert conformal conic)  
1000-meter Universal Transverse Mercator grid, zone 10  
1927 North American Datum  
To place on the predicted North American Datum 1983 move the projection lines 23 meters north and 94 meters east as shown by dashed corner ticks  
Red tint indicates areas in which only landmark buildings are shown  
Fine red dashed lines indicate selected fence lines  
There may be private inholdings within the boundaries of the National or State reservations shown on this map

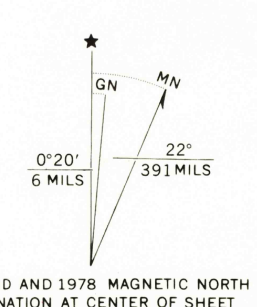
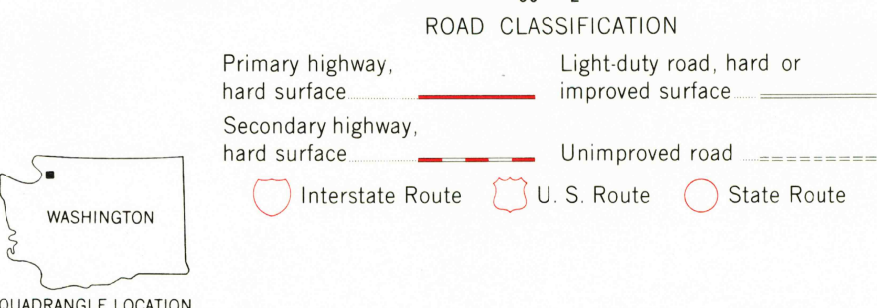
HYDROGRAPHIC SURVEY INDEX

Survey Number	Survey Date	Survey Scale	Survey Line Spacing (Nautical Miles)
H-6331	1939	1:10,000	03-07
H-6476	1938	1:5,000	02-06
H-6654	1940	1:10,000	02-12
H-8331	1955	1:10,000	06-27

HYDROGRAPHIC SURVEY INFORMATION



CONTOUR INTERVAL 20 FEET  
NATIONAL GEODETIC VERTICAL DATUM OF 1929  
BATHYMETRIC CONTOUR INTERVAL 2 METERS  
DATUM IS MEAN LOWER LOW WATER  
THE RELATIONSHIP BETWEEN THE TWO DATUMS IS VARIABLE  
THE MEAN RANGE OF TIDE IS APPROXIMATELY 1.6 METERS



ANACORTES SOUTH, WASH.  
NE/4 DECEPTION PASS 15' QUADRANGLE  
N4822.5-W12230.7 5

1978  
BATHYMETRY ADDED 1980  
DMA 1480 1 NE-SERIES V891

USGS  
HISTORICAL FILE  
NATIONAL MAPPING DIVISION

2985  
AUG 13 1981