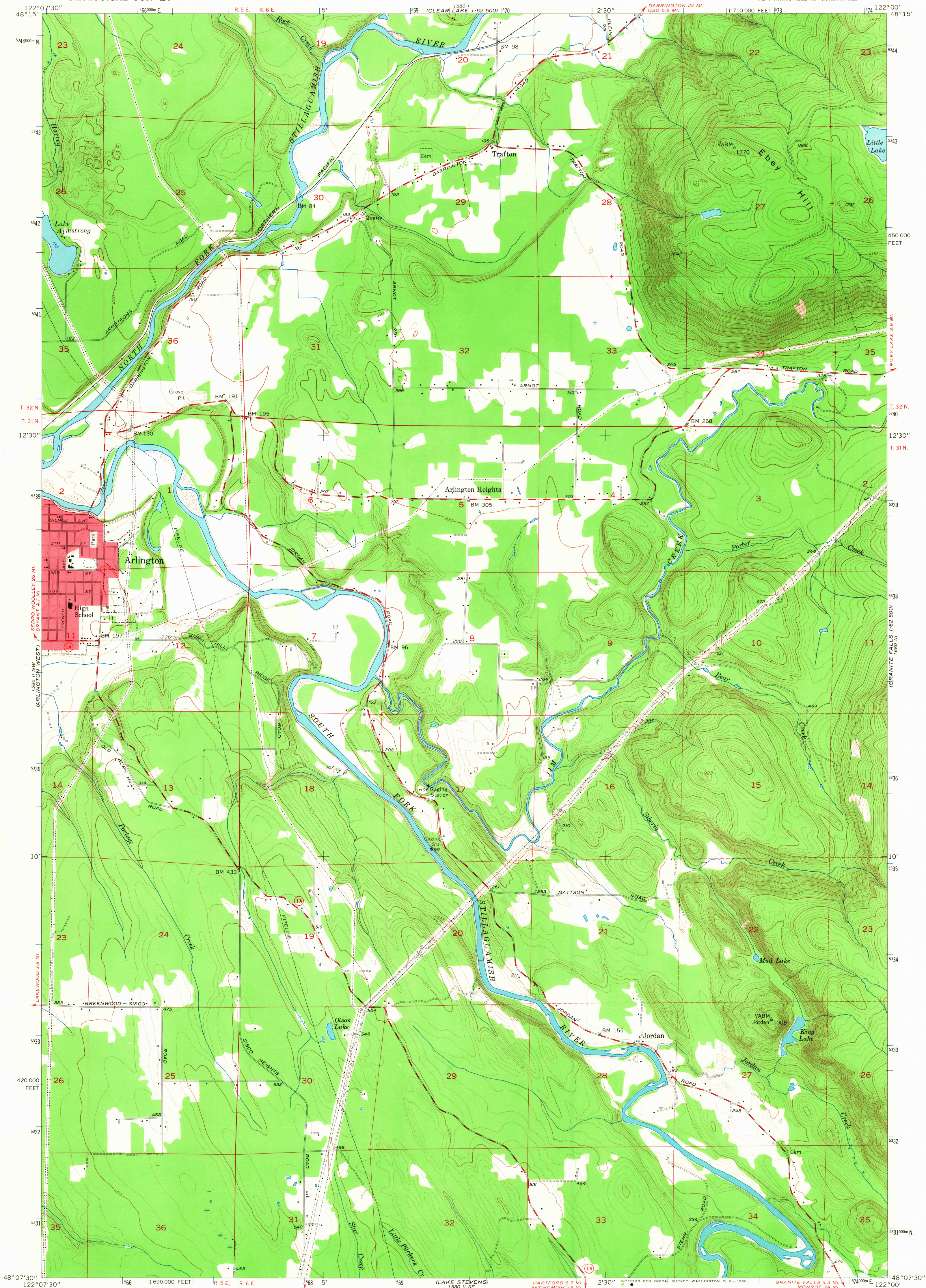


UNITED STATES  
DEPARTMENT OF THE INTERIOR  
GEOLOGICAL SURVEY

ARLINGTON EAST QUADRANGLE  
WASHINGTON-SNOHOMISH CO.  
7.5 MINUTE SERIES (TOPOGRAPHIC)  
NE 4 MARYSVILLE 15' QUADRANGLE



Mapped, edited, and published by the Geological Survey  
Control by USGS and USC&GS

Topography from aerial photographs by multiplex methods  
Aerial photographs taken 1954. Field check 1956

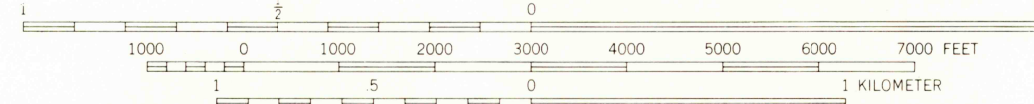
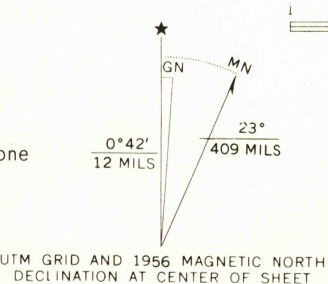
Polyconic projection. 1927 North American datum  
10,000-foot grid based on Washington coordinate system, north zone

1000-meter Universal Transverse Mercator grid ticks,  
zone 10, shown in blue

Red tint indicates areas in which only landmark buildings are shown

Dashed land lines indicate approximate locations

Unchecked elevations are shown in brown



CONTOUR INTERVAL 20 FEET  
DATUM IS MEAN SEA LEVEL

THIS MAP COMPLIES WITH NATIONAL MAP ACCURACY STANDARDS  
FOR SALE BY U.S. GEOLOGICAL SURVEY, DENVER, COLORADO 80225 OR WASHINGTON, D.C. 20242  
A FOLDER DESCRIBING TOPOGRAPHIC MAPS AND SYMBOLS IS AVAILABLE ON REQUEST



ROAD CLASSIFICATION  
Medium-duty ——— Light-duty ———  
Unimproved dirt ———  
State Route —○—

ARLINGTON EAST, WASH.  
NE 4 MARYSVILLE 15' QUADRANGLE  
N4807.5—W12200/7.5

1956

AMS 1580 II NE-SERIES V891

USGS  
Historical File  
Topographic Division

2035