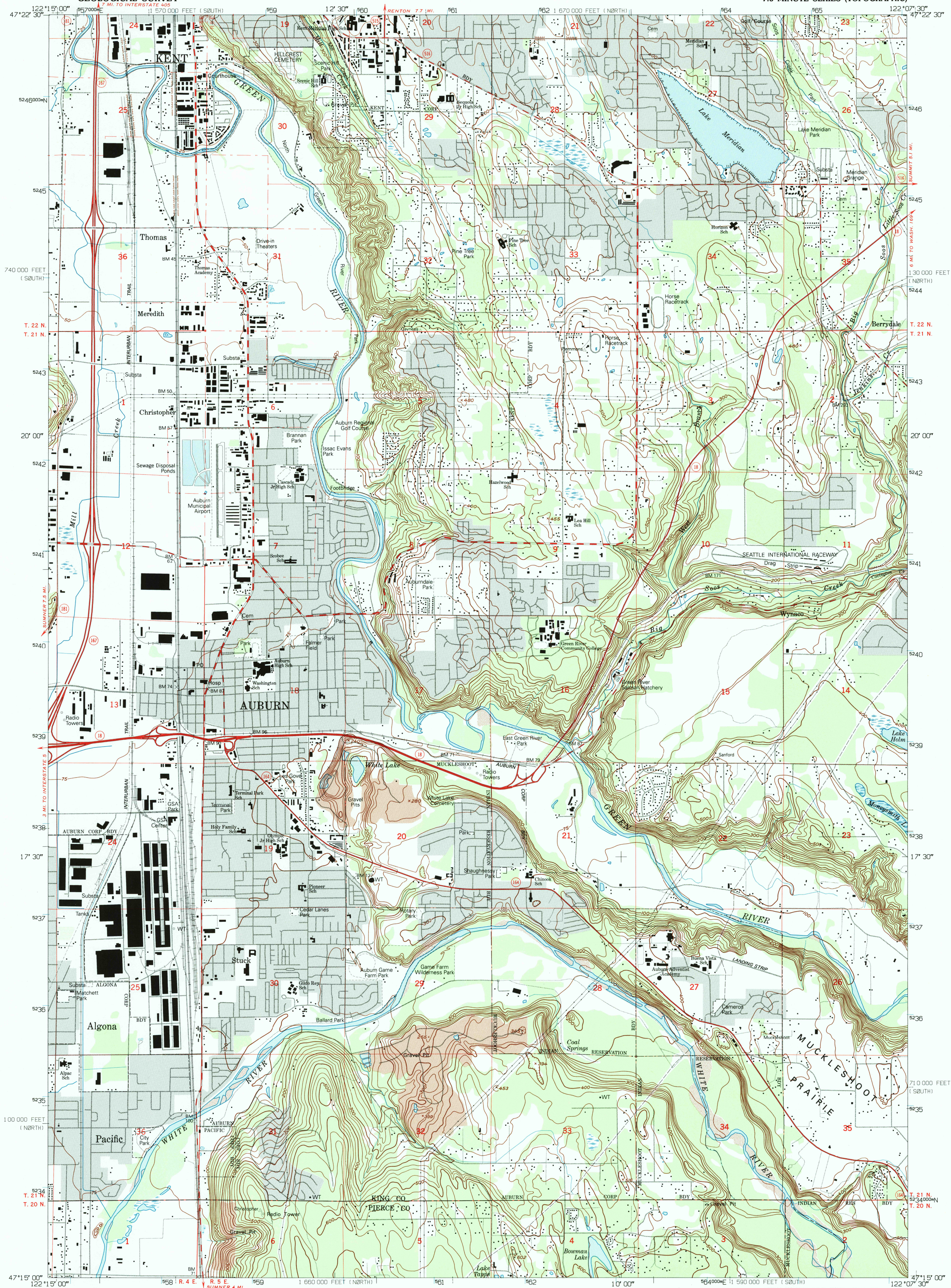


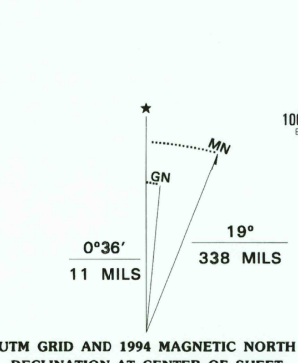
UNITED STATES
DEPARTMENT OF THE INTERIOR
GEOLOGICAL SURVEY

AUBURN QUADRANGLE
WASHINGTON
7.5 MINUTE SERIES (TOPOGRAPHIC)



Produced by the United States Geological Survey
Control by USGS and NOS/NOAA

Compiled from aerial photographs taken 1949. Revised from
aerial photographs taken 1990 and other sources. Field checked
1992. Map edited 1994. Contours and land elevations have
not been revised and may conflict with other content.
North American Datum of 1927 (NAD 27). Projection and
blue 1000-foot ticks: Universal Transverse Mercator, zone 10
1000-foot ticks: Washington Coordinate System, south and
north zones.
North American Datum of 1983 (NAD 83) is shown by dashed
corner ticks. The values of the shift between NAD 27 and
NAD 83 for 7.5-minute intersections are obtainable from
National Geologic Survey NADCON Software.
Gray tint indicates areas in which only landmark buildings are
shown.
There may be private inholdings within the boundaries of the
National or State reservations shown on this map.



SCALE 1:24 000
KILOMETERS
METERS
FEET
MILES
CONTOUR INTERVAL 25 FEET
NATIONAL GEODETIC VERTICAL DATUM OF 1929
TO CONVERT FEET TO METERS MULTIPLY BY 0.3048
TO CONVERT METERS TO FEET MULTIPLY BY 3.2808
THIS MAP COMPLIES WITH NATIONAL MAP ACCURACY STANDARDS
FOR SALE BY U.S. GEOLOGICAL SURVEY
DENVER, COLORADO 80225, OR RESTON, VIRGINIA 22092
A FOLDER DESCRIBING TOPOGRAPHIC MAPS AND SYMBOLS IS AVAILABLE ON REQUEST

ROAD CLASSIFICATION
Primary highway
hard surface
Secondary highway
hard surface
Light-duty road, hard or
improved surface
Unimproved road
Interstate Route
U.S. Route
State Route
QUADRANGLE LOCATION
WASHINGTON
AUBURN, WA
47122-C2-TF-024
1949
REVISED 1994
DMA 1578 I SW-SERIES V891

USGS AND HISTORICAL
MAP ARCHIVE
APR 07 1995
REC'D FILE COPY