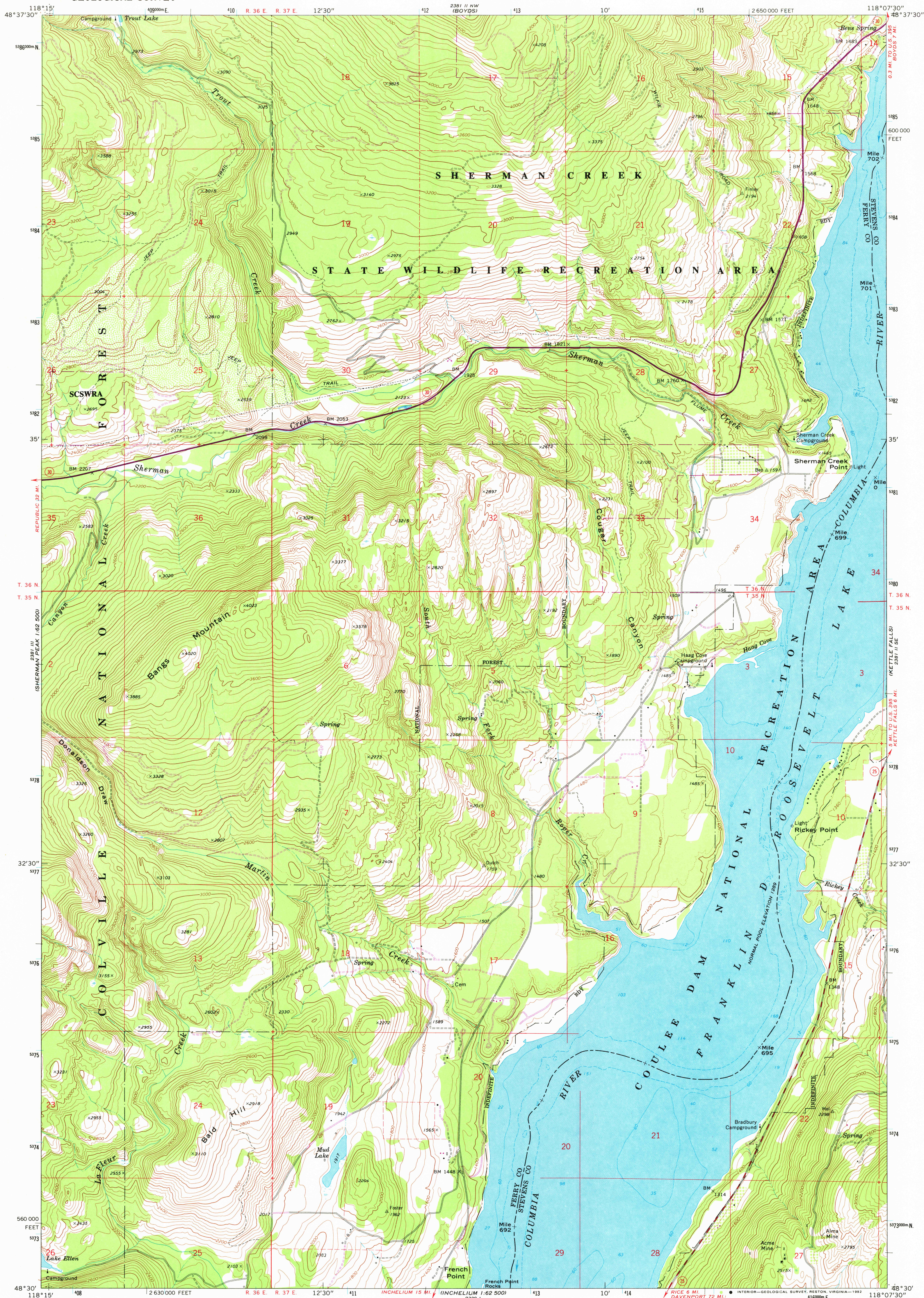


2381 II NW
1:62,500
(SHERMAN PEAK)

UNITED STATES
DEPARTMENT OF THE INTERIOR
GEOLOGICAL SURVEY

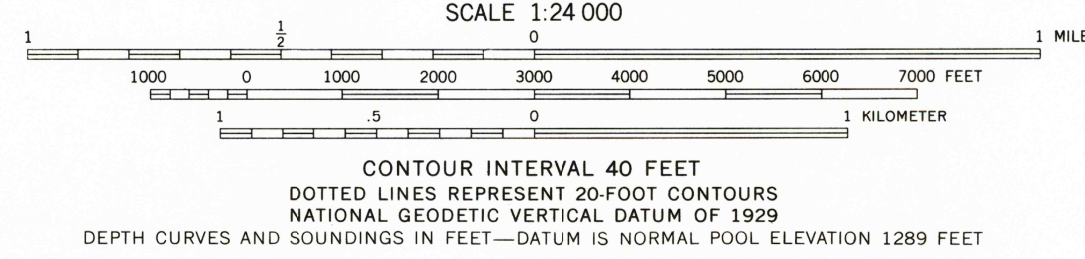
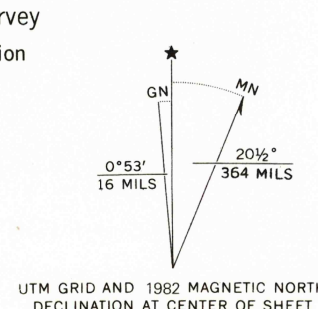
BANGS MOUNTAIN QUADRANGLE
WASHINGTON
7.5 MINUTE SERIES (TOPOGRAPHIC)

2381 I NE
1:62,500
(MARCUSS)



2381 IV
1:62,500
(TWIN LAKES)

Mapped, edited, and published by the Geological Survey
Control by USGS, NOS/NOAA, and US Bureau of Reclamation
Topography by photogrammetric methods from aerial
photographs taken 1965. Field checked 1969
Selected hydrographic data compiled from USC&GS
Chart 6169 (1968). This information is not intended
for navigational purposes
Polyconic projection. 1927 North American datum
10,000-foot grid based on Washington coordinate system,
north zone
1000-meter Universal Transverse Mercator grid ticks,
zone 11, shown in blue
To place on the predicted North American Datum 1983
move the projection lines 16 meters north and
82 meters east as shown by dashed corner ticks
Fine red dashed lines indicate selected fence lines



ROAD CLASSIFICATION
Primary highway, all weather, hard surface
Secondary highway, all weather, hard surface
Light-duty road, all weather, improved surface
Unimproved road, fair or dry weather
State Route

BANGS MOUNTAIN, WASH.

N4830—W11807.5/7.5

THIS MAP COMPLIES WITH NATIONAL MAP ACCURACY STANDARDS
FOR SALE BY U. S. GEOLOGICAL SURVEY, DENVER, COLORADO 80225, OR RESTON, VIRGINIA 22092
A FOLDER DESCRIBING TOPOGRAPHIC MAPS AND SYMBOLS IS AVAILABLE ON REQUEST

Revisions shown in purple compiled from aerial photographs
taken 1979 and other source data. This information not
field checked. Map edited 1982

1969
PHOTOREVISED 1982
DMA 2381 II SW—SERIES V891

RETURN TO:
USGS NHD HISTORICAL MAP ARCHIVES

OCT 25 1982

2050