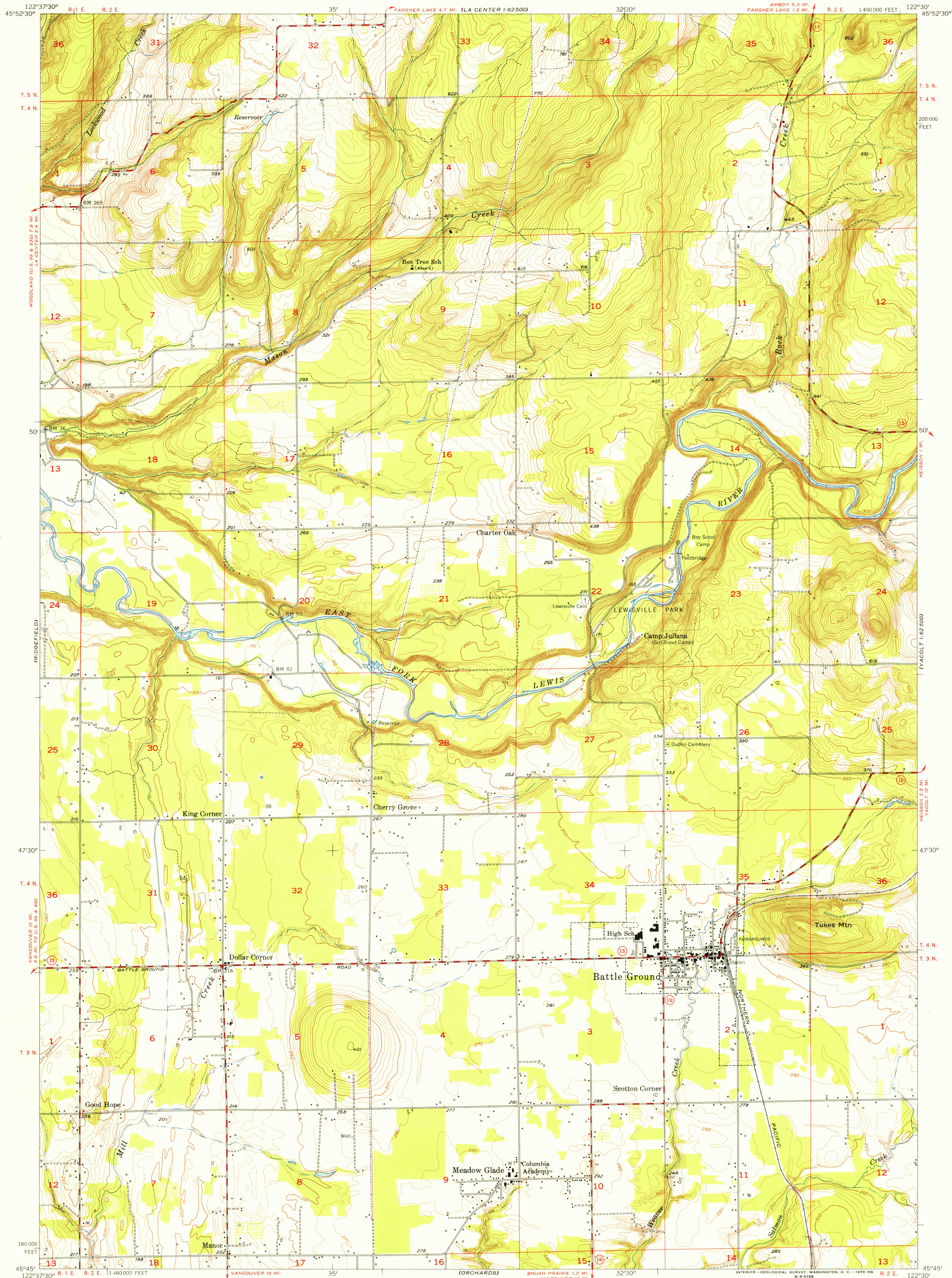


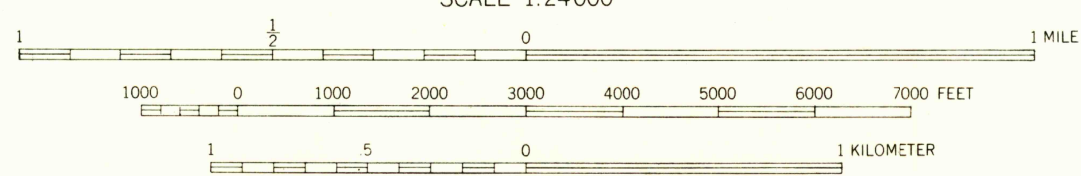
UNITED STATES
DEPARTMENT OF THE INTERIOR
GEOLOGICAL SURVEY

BATTLE GROUND QUADRANGLE
WASHINGTON—CLARK CO.
7.5 MINUTE SERIES (TOPOGRAPHIC)
SE/4 LA CENTER 15' QUADRANGLE



U.S.G.S.
FILE COPY
TOPOGRAPHIC DIVISION

Maped, edited, and published by the Geological Survey
Control by USGS and USCE
Topography from aerial photographs by Kelsh plotter
Aerial photographs taken 1951. Field check 1954
Polyconic projection. 1927 North American datum
10,000-foot grid based on Washington coordinate system, south zone



ROAD CLASSIFICATION
Heavy duty ——— Light duty ———
Medium duty ——— Unimproved dirt ———
U. S. Route ——— State Route ———



BATTLE GROUND, WASH.
SE/4 LA CENTER 15' QUADRANGLE
N 4545—W 12230/7.5

U.S.G.S.
FILE COPY
TOPOGRAPHIC DIVISION

THIS MAP COMPLIES WITH NATIONAL MAP ACCURACY STANDARDS
FOR SALE BY U. S. GEOLOGICAL SURVEY, FEDERAL CENTER, DENVER, COLORADO OR WASHINGTON 25, D. C.
A FOLDER DESCRIBING TOPOGRAPHIC MAPS AND SYMBOLS IS AVAILABLE ON REQUEST

1954

USGS
Historical File
Topographic Division

DEC 1 1955

3200