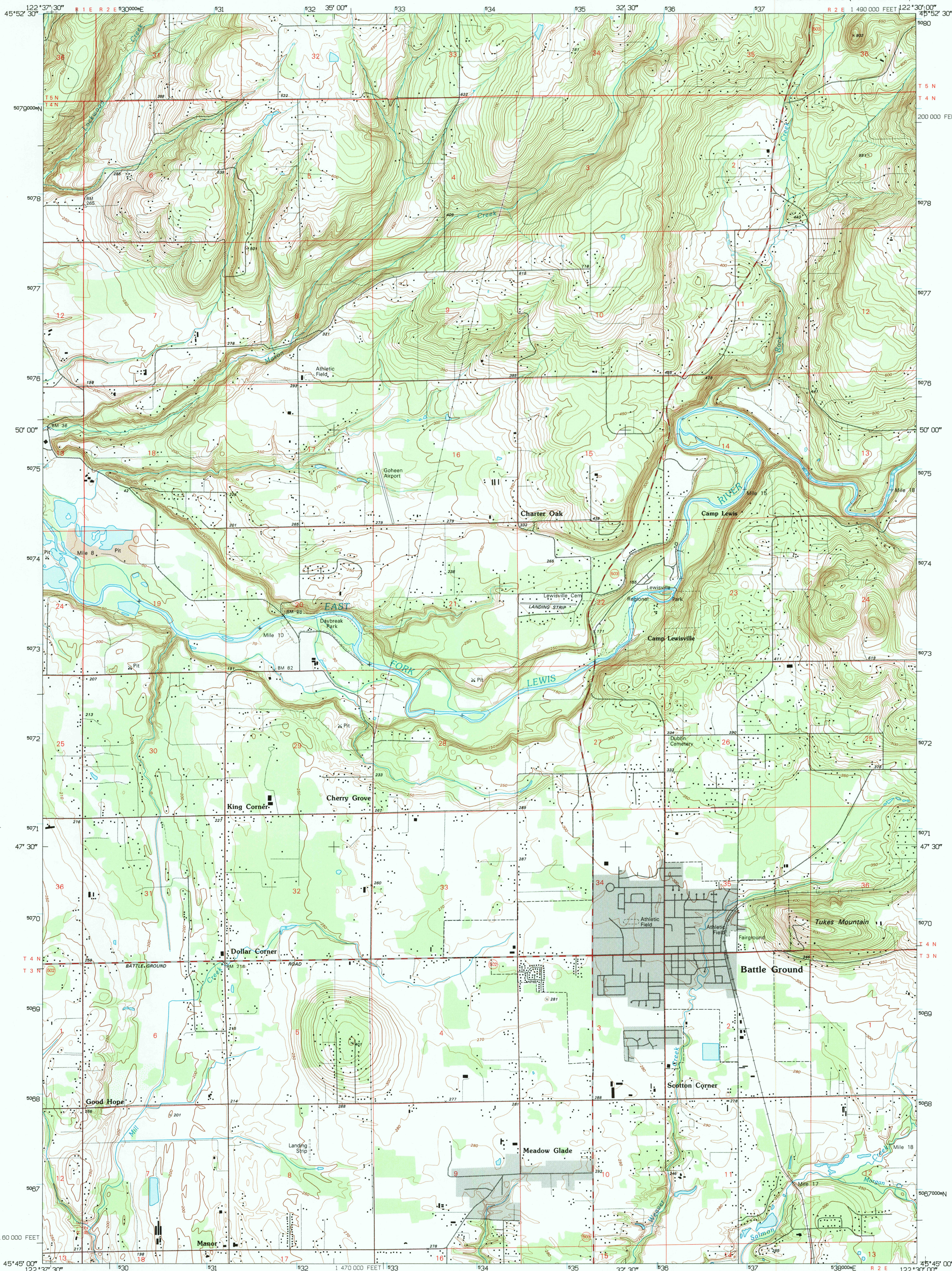
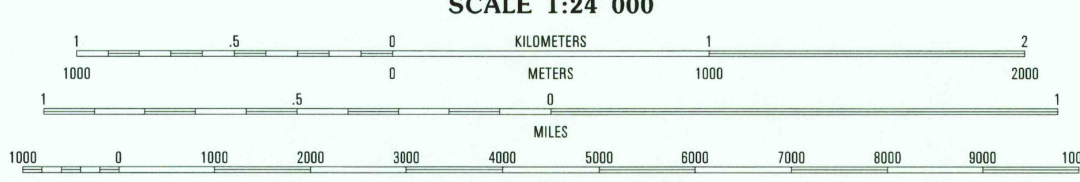
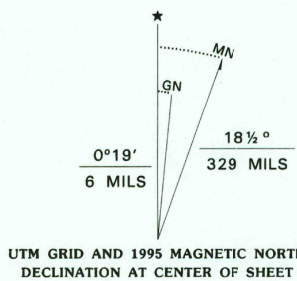


UNITED STATES  
DEPARTMENT OF THE INTERIOR  
GEOLOGICAL SURVEY

BATTLE GROUND QUADRANGLE  
WASHINGTON-CLARK CO.  
7.5-MINUTE SERIES (TOPOGRAPHIC)



Produced by the United States Geological Survey  
Control by USGS and NOS/NOAA  
Compiled from imagery dated 1951. Revised from imagery  
dated 1990. PLSS and survey control current as of 1954.  
Map edited 1995. Contours and land elevations have not  
been revised and may conflict with other content.  
North American Datum of 1927 (NAD 27). Projection and  
blue 1000-meter ticks: Universal Transverse Mercator, zone 10  
10 000-foot ticks: Washington Coordinate System, south zone  
North American Datum of 1983 (NAD 83) is shown by dashed  
corner ticks. The values of the shift between NAD 27  
and NAD 83 for 7.5-minute intersections are obtainable from  
National Geodetic Survey NADCON software.



CONTOUR INTERVAL 10 FEET  
NATIONAL GEODETIC VERTICAL DATUM OF 1929  
TO CONVERT FEET TO METERS MULTIPLY BY 0.3048  
TO CONVERT METERS TO FEET MULTIPLY BY 3.2808

THIS MAP COMPLIES WITH NATIONAL MAP ACCURACY STANDARDS  
FOR SALE BY U.S. GEOLOGICAL SURVEY  
DENVER, COLORADO 80225 OR RESTON, VIRGINIA 22092  
A FOLDER DESCRIBING TOPOGRAPHIC MAPS AND SYMBOLS IS AVAILABLE ON REQUEST



QUADRANGLE LOCATION

ROAD CLASSIFICATION  
Primary highway  
hard surface .....  
Secondary highway  
hard surface .....  
Light-duty road, hard or  
improved surface .....  
Unimproved road .....  
Interstate Route U.S. Route State Route

1	2	3	1 Woodland
4	5	6	2 Ariel
7	8	9	3 Ambey
10	11	12	4 Ridgefield
13	14	15	5 Vacolt
16	17	18	6 Vancouver
19	20	21	7 Orchard
22	23	24	8 Lacamas Creek

BATTLE GROUND, WA  
45122-G5-TF-024  
1990  
DMA 1475 I SE-SERIES V891

USGS HISTORICAL  
MAP ARCHIVES  
JUN 16 1995  
REC'D FILE COPY