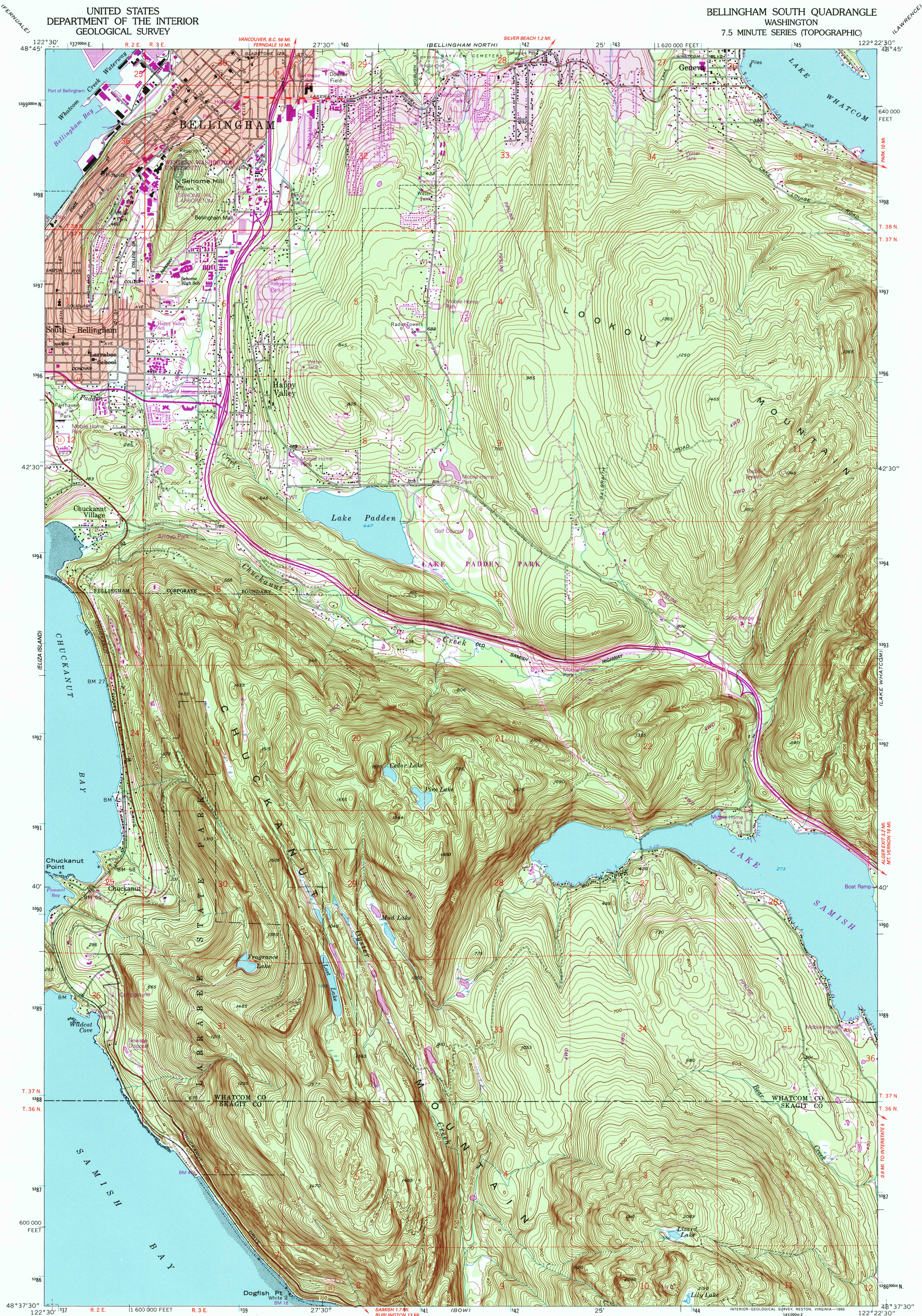


UNITED STATES
DEPARTMENT OF THE INTERIOR
GEOLOGICAL SURVEY

BELLINGHAM SOUTH QUADRANGLE
WASHINGTON
7.5 MINUTE SERIES (TOPOGRAPHIC)



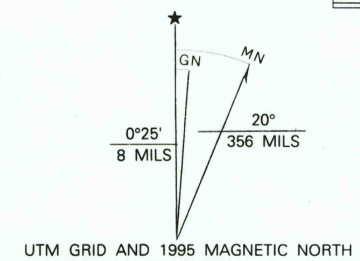
Produced by the United States Geological Survey
Control by USGS and NOS/NOAA

Compiled from aerial photographs taken 1949. Revisions shown in purple and woodland compiled from aerial photographs taken 1989 and other sources and have been field checked. Map edited 1995. Conflicts may exist between some updated features and previously mapped contours.

North American Datum of 1927 (NAD 27). Projection and 1000-foot ticks: Washington Coordinate System, north zone (Lambert Conformal Conic).

Blue 1000-meter Universal Transverse Mercator ticks, zone 10 North American Datum of 1983 (NAD 83) is shown by dashed corner ticks. The values of the shift between NAD 27 and NAD 83 for 7.5-minute intersections are obtainable from National Geodetic Survey NADCON software.

There may be private inholdings within the boundaries of the National or State reservations shown on this map.



COMPLIES WITH U.S. GEOLOGICAL SURVEY STANDARDS FOR SPATIAL ACCURACY—CLASS 2
FOR SALE BY U.S. GEOLOGICAL SURVEY
DENVER, COLORADO 80225, OR RESTON, VIRGINIA 22092
A FOLDER DESCRIBING TOPOGRAPHIC MAPS AND SYMBOLS IS AVAILABLE ON REQUEST

ROAD CLASSIFICATION
Heavy-duty ——— Light-duty ———
Medium-duty ——— Unimproved dirt ———
Interstate Route ——— U. S. Route ——— State Route ———



BELLINGHAM SOUTH, WA
48122-F4-TF-024

1954
REVISED 1995
DMA 1581 III NW-SERIES V891

