

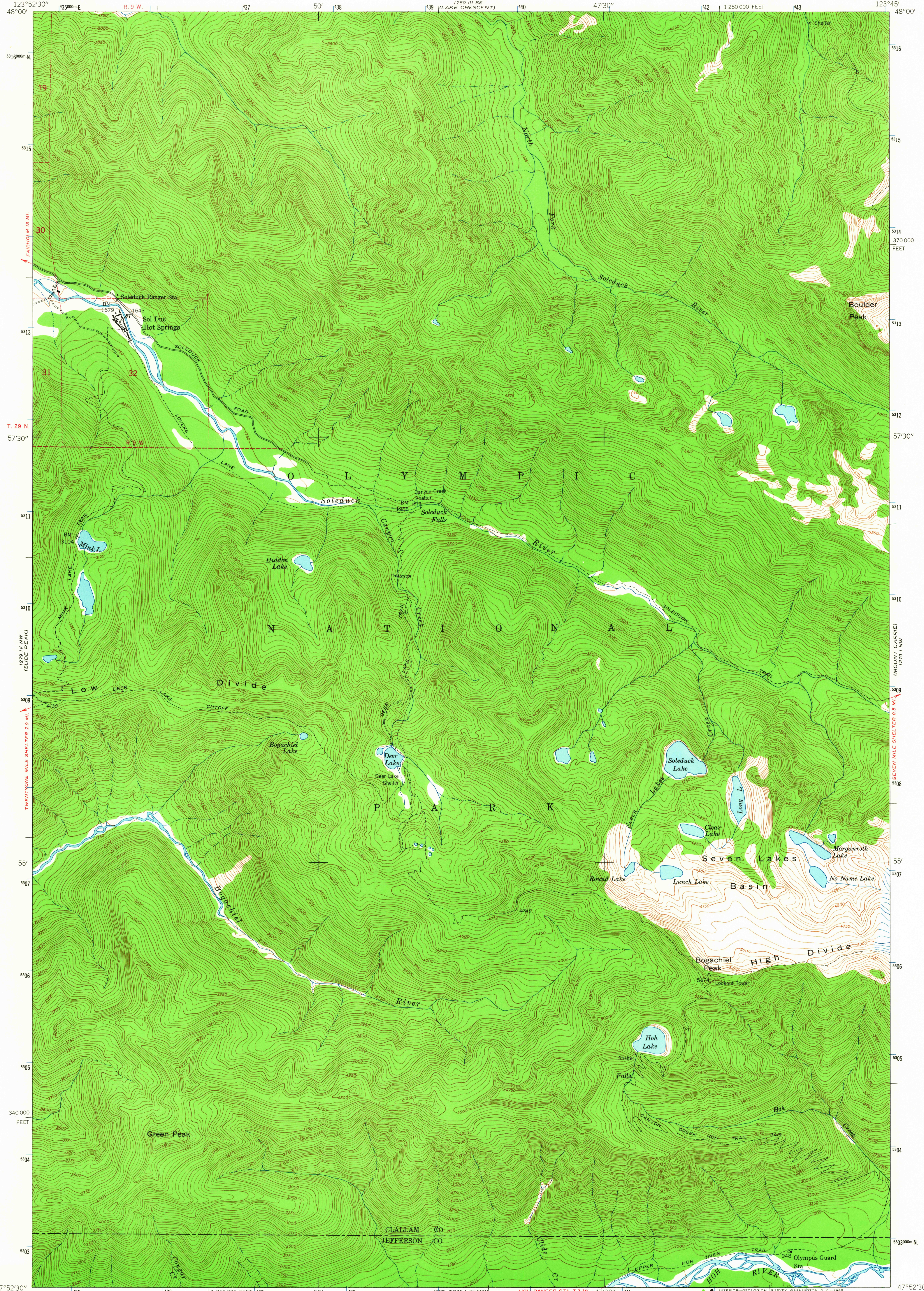
129° 11' 30" W  
(MOUNT MILLER)

UNITED STATES  
DEPARTMENT OF THE INTERIOR  
GEOLOGICAL SURVEY

UNITED STATES  
DEPARTMENT OF THE ARMY  
CORPS OF ENGINEERS

BOGACHIEL PEAK QUADRANGLE  
WASHINGTON  
7.5 MINUTE SERIES (TOPOGRAPHIC)  
NE/4 MOUNT TOM 15' QUADRANGLE

129° 11' 30" W  
(LAKE SUMMIT AND)



129° 11' 30" W  
(MOUNT TOM)

Mapped by the Army Map Service  
Published for civil use by the Geological Survey

Control by USGS, USC&GS, and USCE

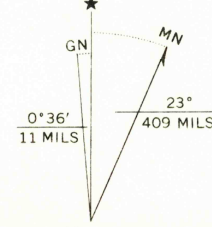
Topography from aerial photographs by multiplex methods  
Aerial photographs taken 1943. Field check 1950

Polyconic projection. 1927 North American datum  
10,000-foot grid based on Washington coordinate system,  
north zone

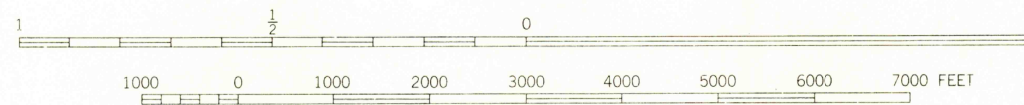
Unchecked elevations are shown in brown

Dashed land lines indicate approximate locations

1000-meter Universal Transverse Mercator grid ticks,  
zone 10, shown in blue



UTM GRID AND 1950 MAGNETIC NORTH  
DECLINATION AT CENTER OF SHEET



CONTOUR INTERVAL 50 FEET  
DASHED LINES REPRESENT HALF-INTERVAL CONTOURS  
DATUM IS MEAN SEA LEVEL



U.S.G.S.  
FILE COPY  
TOPOGRAPHIC DIVISION

ROAD CLASSIFICATION  
Heavy-duty 4 LANE 16 LANE Light-duty  
Medium-duty 4 LANE 16 LANE Unimproved dirt  
U.S. Route State Route

BOGACHIEL PEAK, WASH.  
NE/4 MOUNT TOM 15' QUADRANGLE  
N4752.5-W12345/7.5

1950

AMS 1279 IV NE-SERIES V891

AUG 13 1965

Historical File  
Topographic Division

2080

THIS MAP COMPLIES WITH NATIONAL MAP ACCURACY STANDARDS  
FOR SALE BY U.S. GEOLOGICAL SURVEY, DENVER, COLORADO 80225, OR WASHINGTON, D.C. 20242  
A FOLDER DESCRIBING TOPOGRAPHIC MAPS AND SYMBOLS IS AVAILABLE ON REQUEST