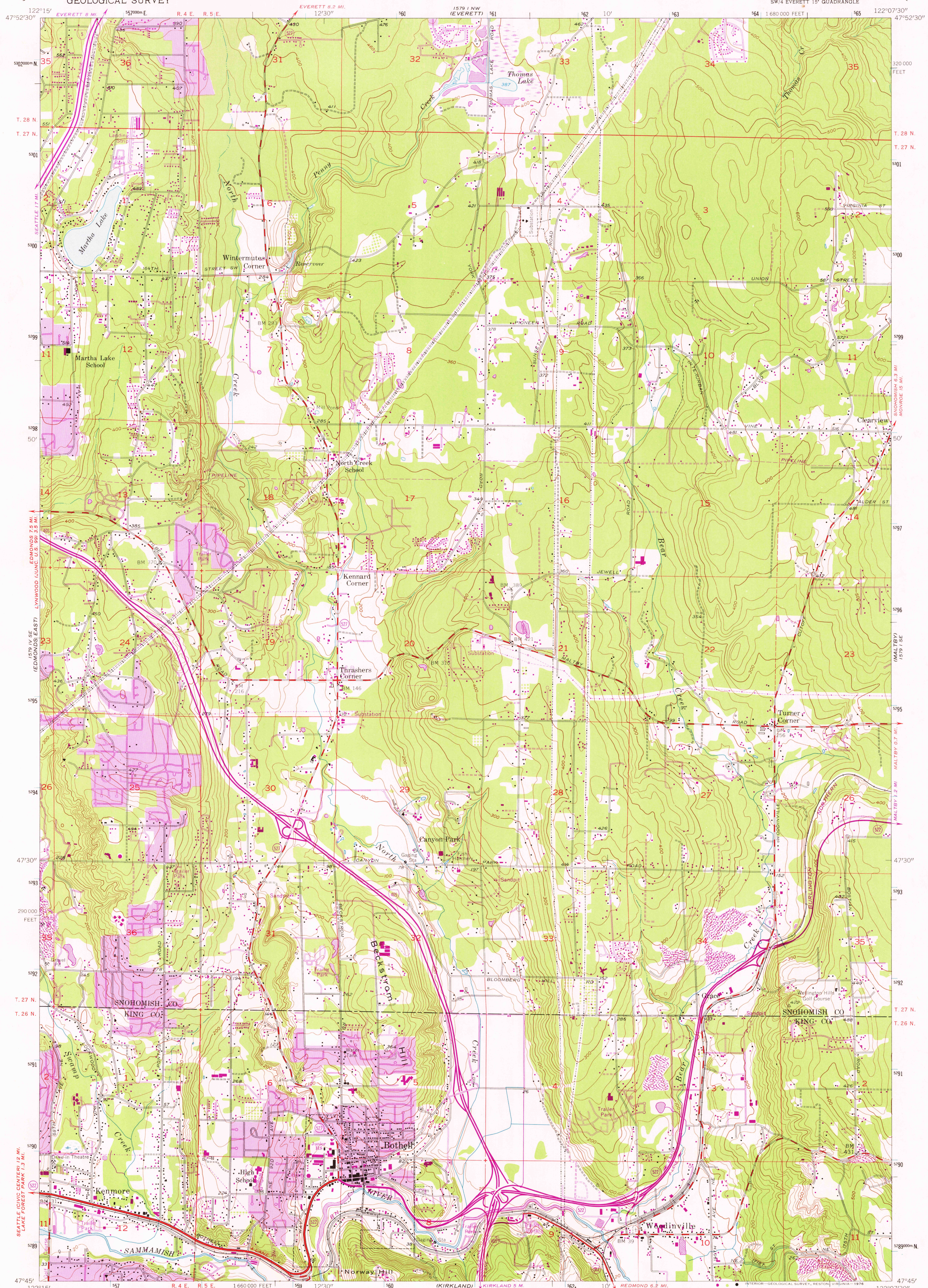


UNITED STATES  
DEPARTMENT OF THE INTERIOR  
GEOLOGICAL SURVEY

BOTHELL QUADRANGLE  
WASHINGTON  
7.5 MINUTE SERIES (TOPOGRAPHIC)  
SW/4 EVERETT 15' QUADRANGLE



Mapped, edited, and published by the Geological Survey

Control by USGS and USC&GS

Topography from aerial photographs by multiplex methods

Aerial photographs taken 1952. Field check 1953

Polyconic projection. 1927 North American datum

10,000-foot grid based on Washington coordinate system, north zone

Dashed land lines indicate approximate location

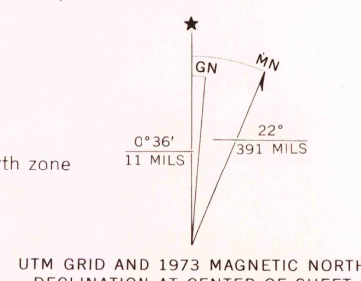
1000-meter Universal Transverse Mercator grid ticks,

zone 10, shown in blue

Revisions shown in purple compiled from aerial photographs

taken 1968 and 1973. This information not field checked

Purple tint indicates extension of urban areas



THIS MAP COMPLIES WITH NATIONAL MAP ACCURACY STANDARDS  
FOR SALE BY U. S. GEOLOGICAL SURVEY, DENVER, COLORADO 80225, OR RESTON, VIRGINIA 22092  
A FOLDER DESCRIBING TOPOGRAPHIC MAPS AND SYMBOLS IS AVAILABLE ON REQUEST



QUADRANGLE LOCATION

ROAD CLASSIFICATION  
Heavy-duty ——— Light-duty ———  
Medium-duty ——— Unimproved dirt ———  
Interstate Route ——— State Route ———

BOTHELL, WASH.  
SW/4 EVERETT 15' QUADRANGLE  
N 4745—W12207.5/7.5

USGS  
HISTORICAL FILE  
TOPOGRAPHIC DIVISION

1953  
PHOTOREVISED 1968 AND 1973  
AMS 1579 I SW—SERIES V891

MAR 0 1 1976