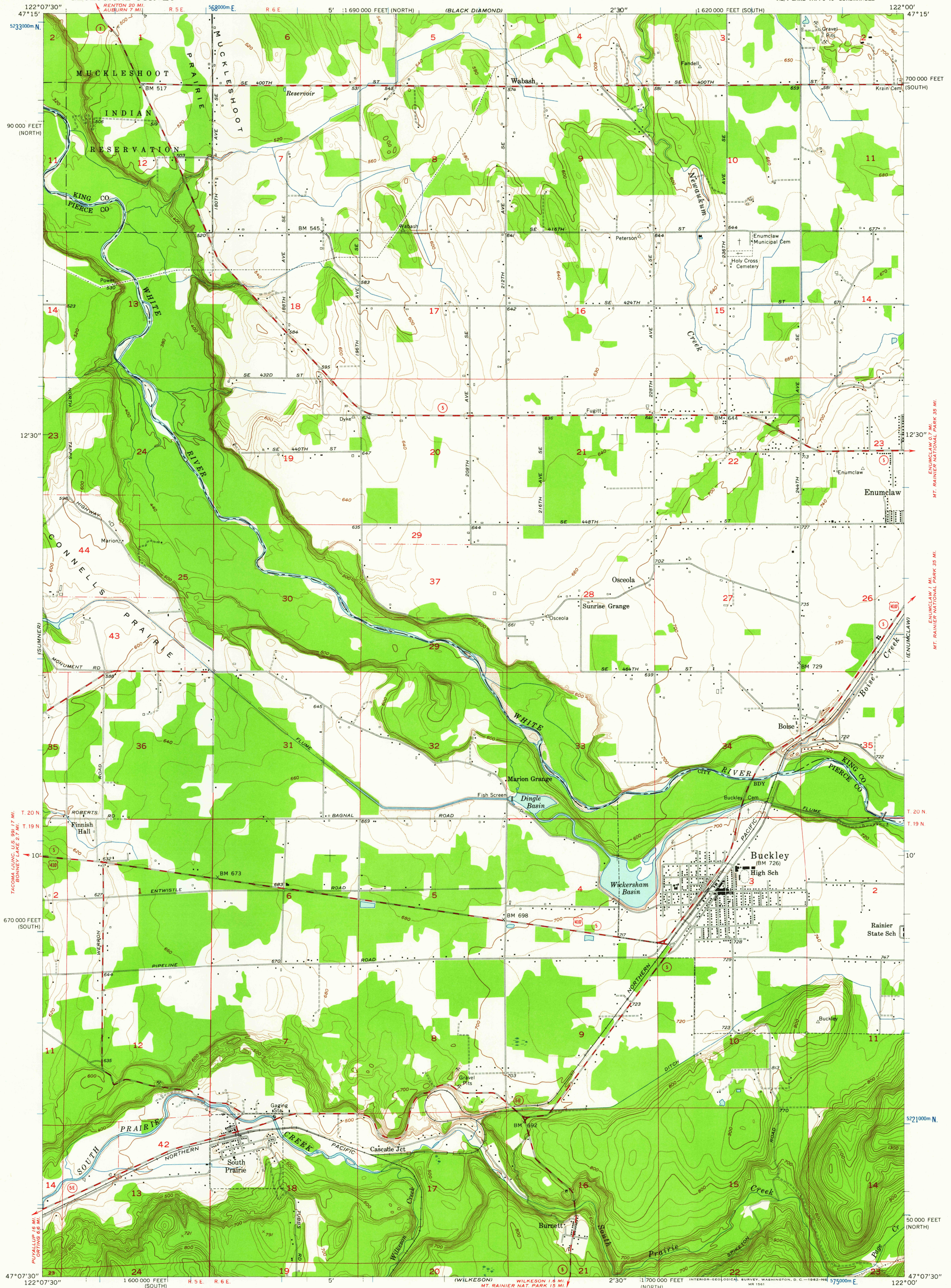


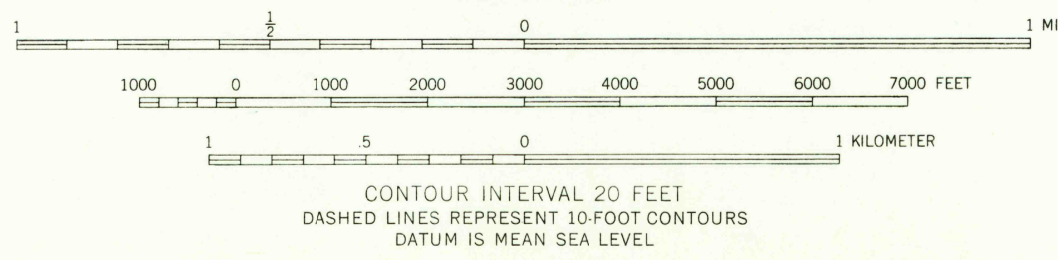
UNITED STATES
DEPARTMENT OF THE INTERIOR
GEOLOGICAL SURVEY

BUCKLEY QUADRANGLE
WASHINGTON
7.5 MINUTE SERIES (TOPOGRAPHIC)
NE/4 LAKE TAPPS 15' QUADRANGLE



Mapped, edited, and published by the Geological Survey
Control by USGS and USC&GS
Topography from aerial photographs by Kelsh plotter
Aerial photographs taken 1954. Field check 1956
Polyconic projection. 1927 North American datum
10,000-foot grids based on Washington coordinate system,
north and south zones
1000-meter Universal Transverse Mercator grid ticks,
zone 10, shown in blue
Unchecked elevations are shown in brown

TRUE NORTH
MAGNETIC NORTH
APPROXIMATE MEAN
DECLINATION, 1956



ROAD CLASSIFICATION
Medium-duty ——— Light-duty ———
Unimproved dirt ———
U. S. Route ——— State Route ———

BUCKLEY, WASH.
NE/4 LAKE TAPPS 15' QUADRANGLE
N4707.5—W12200/7.5

USGS
Historical File
Topographic Division

1956

FILE COPY
TOPOGRAPHIC DIVISION

MAY - 2 1962

4210