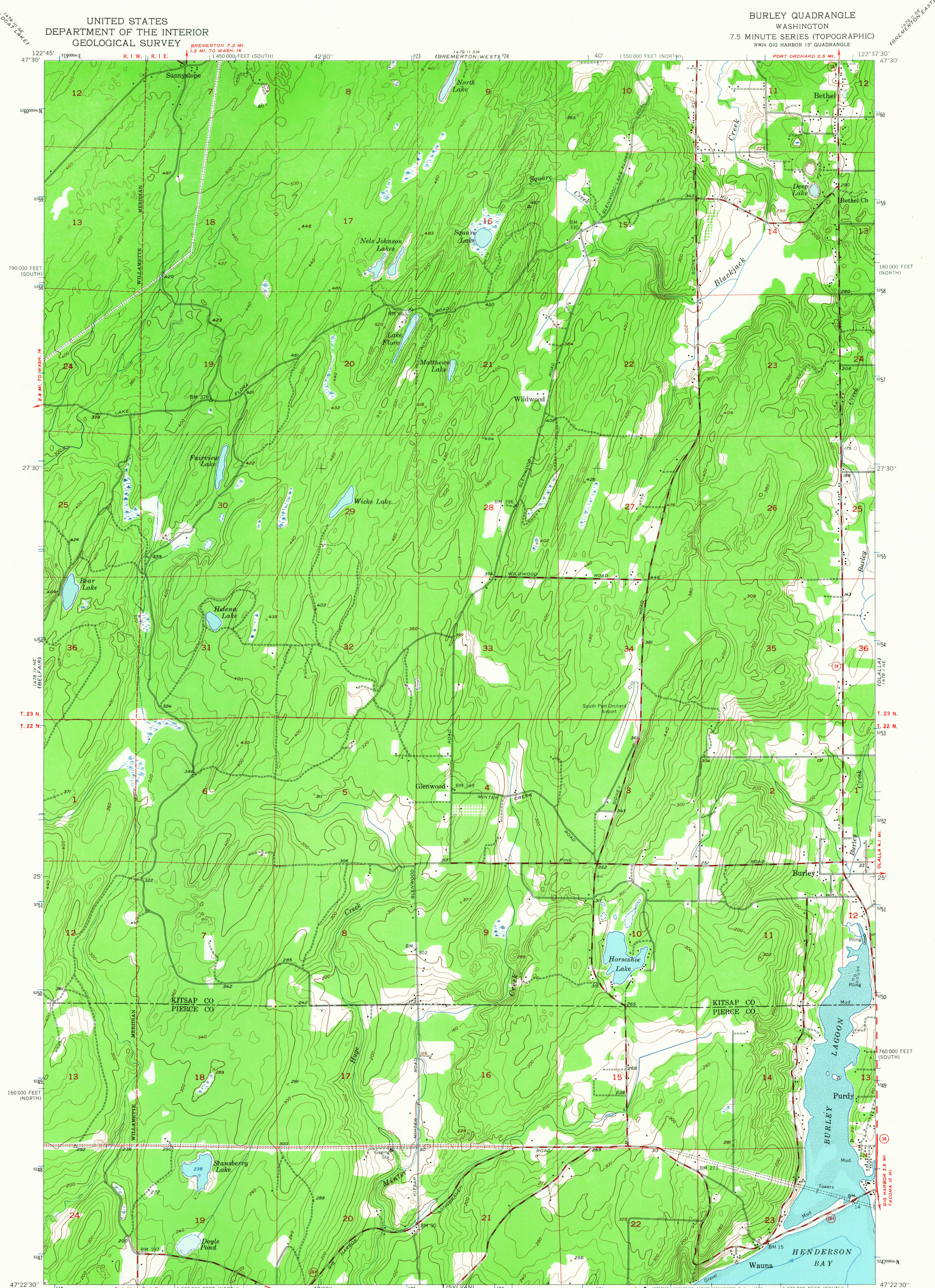


UNITED STATES
DEPARTMENT OF THE INTERIOR
GEOLOGICAL SURVEY

BURLEY QUADRANGLE
WASHINGTON
7.5 MINUTE SERIES (TOPOGRAPHIC)
NW/4 GIG HARBOR 15' QUADRANGLE



Mapped, edited, and published by the Geological Survey

Control by USGS, USC&GS, and USCE

Topography from aerial photographs by multiplex methods
Aerial photographs taken 1951. Field check 1953

Hydrography compiled from USC&GS chart 6460

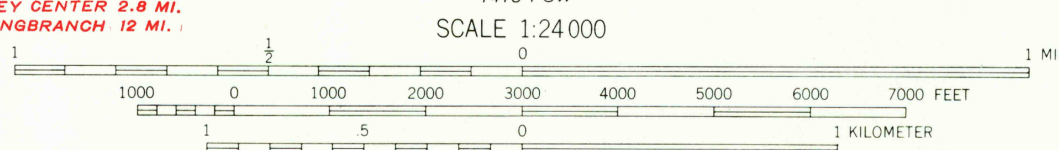
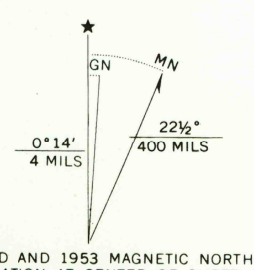
Polyconic projection. 1927 North American datum

10,000-foot grids based on Washington coordinate system,
north and south zones

Dashed land lines indicate approximate locations

Unchecked elevations are shown in brown

1000-meter Universal Transverse Mercator grid ticks,
zone 10, shown in blue



CONTOUR INTERVAL 20 FEET
DATUM IS MEAN SEA LEVEL

DEPTH CURVES IN FEET—DATUM IS MEAN LOWER LOW WATER
SHORELINE SHOWN REPRESENTS THE APPROXIMATE LINE OF MEAN HIGH WATER
THE AVERAGE RANGE OF TIDE IS APPROXIMATELY 9 FEET



ROAD CLASSIFICATION		
Heavy-duty	4 LANE 6 LANE	Light-duty
Medium-duty	4 LANE 6 LANE	Unimproved dirt
U.S. Route		State Route

BURLEY, WASH.
NW/4 GIG HARBOR 15' QUADRANGLE
N 4722.5—W 12237.5/7.5

USGS
Historical File
Topographic Division

1953

AMS 1478 1 NW—SERIES V891

1675
JAN 20 1967
U.S.G.S.
FILE COPY
TOPOGRAPHIC DIVISION

FOR SALE BY U.S. GEOLOGICAL SURVEY, DENVER, COLORADO 80225 OR WASHINGTON, D. C. 20242
A FOLDER DESCRIBING TOPOGRAPHIC MAPS AND SYMBOLS IS AVAILABLE ON REQUEST