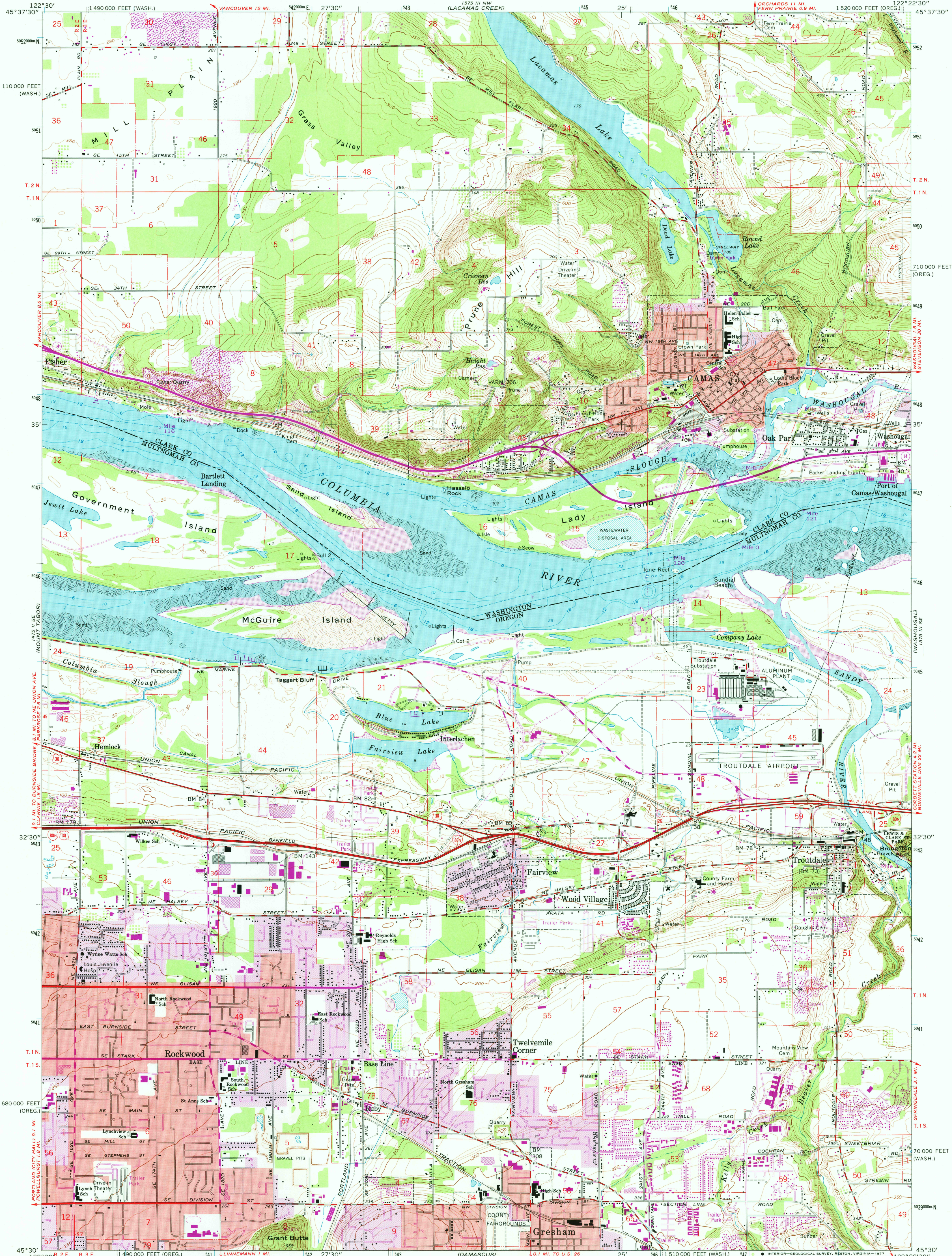


UNITED STATES
DEPARTMENT OF THE INTERIOR
GEOLOGICAL SURVEY

CAMAS QUADRANGLE
WASHINGTON—OREGON
7.5 MINUTE SERIES (TOPOGRAPHIC)



Mapped, edited, and published by the Geological Survey

Control by USGS and NOS/NOAA, and State of Oregon

Topography from aerial photographs by photogrammetric methods

and by planetable surveys 1954. Culture and drainage in part

by USC&GS. Aerial photographs taken 1951

Revised from aerial photographs taken 1960. Field check 1961

Selected hydrographic data compiled from NOS/NOAA Chart 6156 (1959)

This information is not intended for navigational purposes

Polyconic projection. 1927 North American datum

10,000-foot grids based on Oregon coordinate system, north zone

and Washington coordinate system, south zone

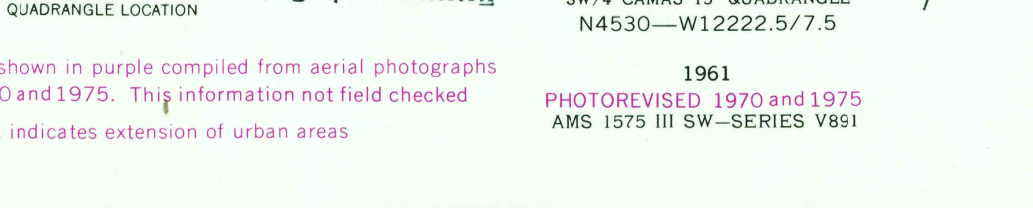
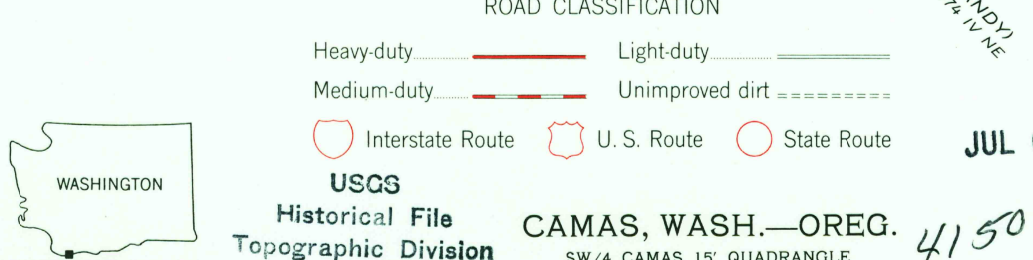
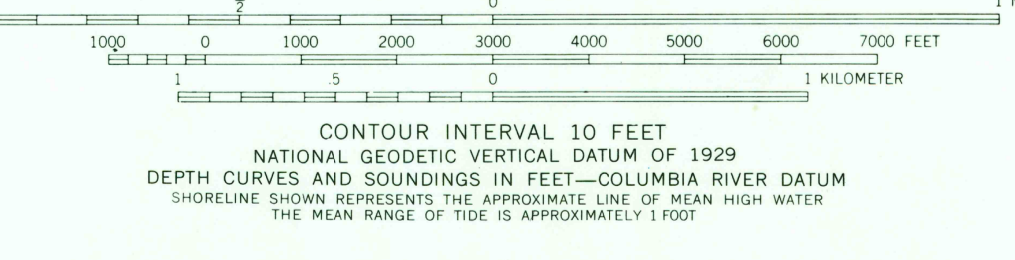
1000-meter Universal Transverse Mercator grid ticks,

zone 10, shown in blue

Red tint indicates areas in which only landmark buildings are shown

Dashed land lines indicate approximate locations

Fine red dashed lines indicate selected fence lines



JUL 06 1978

4150