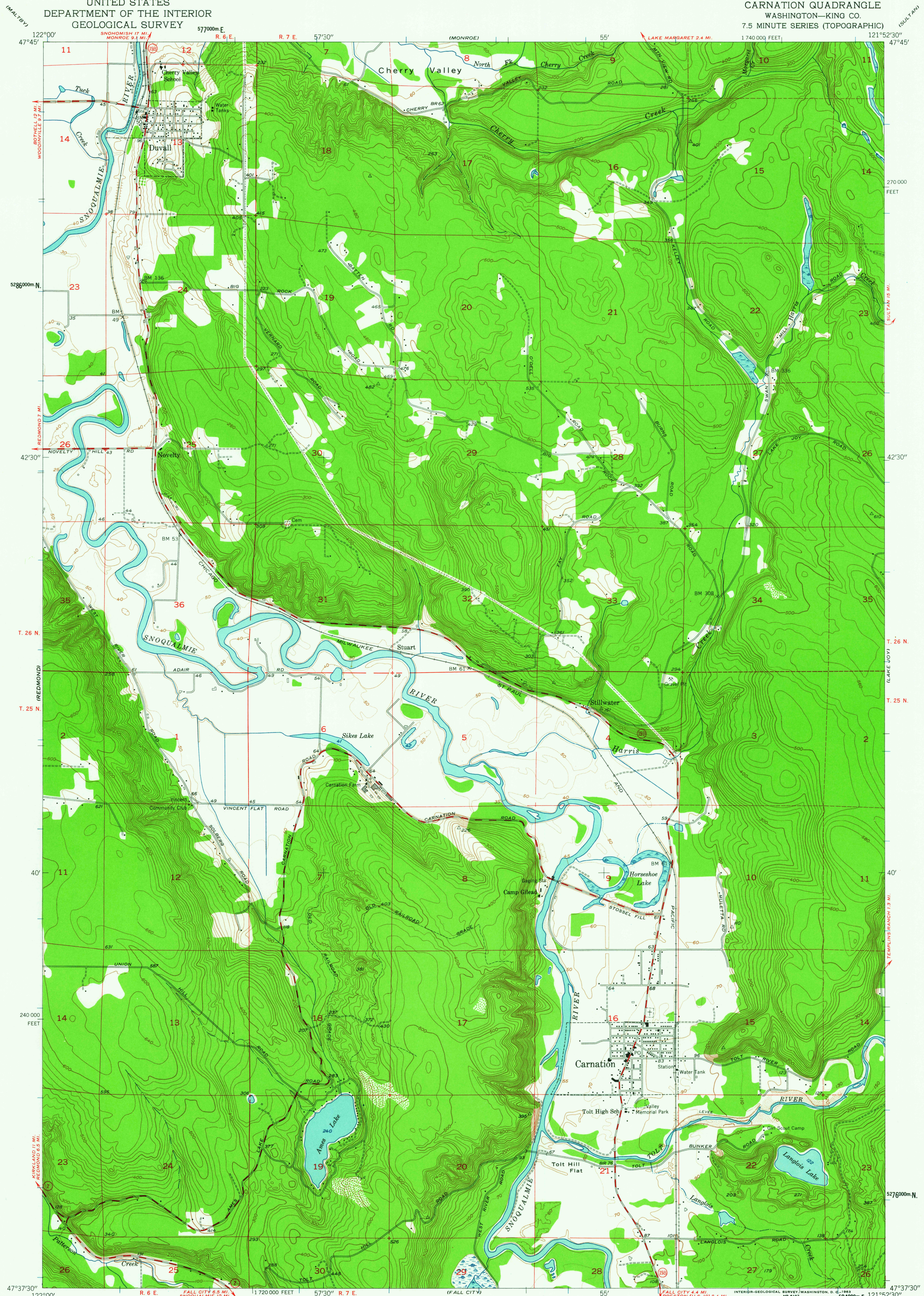
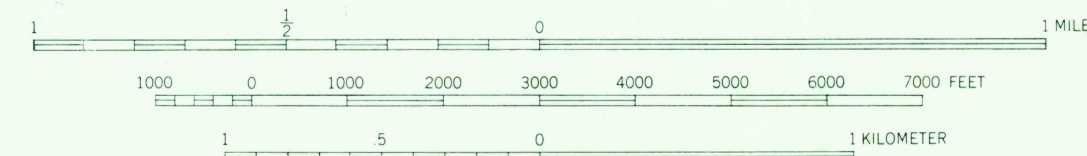
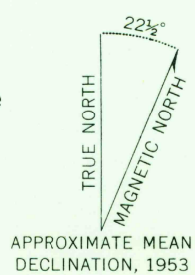


UNITED STATES  
DEPARTMENT OF THE INTERIOR  
GEOLOGICAL SURVEY

CARNATION QUADRANGLE  
WASHINGTON—KING CO.  
7.5 MINUTE SERIES (TOPOGRAPHIC)



Mapped, edited, and published by the Geological Survey  
Control by USGS and USC&GS  
Topography from aerial photographs by multiplex methods  
Aerial photographs taken 1952. Field check 1953  
Polyconic projection. 1927 North American datum  
10,000-foot grid based on Washington coordinate system, north zone  
1000-meter Universal Transverse Mercator grid ticks,  
zone 10, shown in blue  
Dashed land lines indicate approximate locations



CONTOUR INTERVAL 20 FEET  
DOTTED LINES REPRESENT HALF-INTERVAL CONTOURS  
CONTOUR INTERVAL ON RIVER SURFACES 5 AND 10 FEET  
DATUM IS MEAN SEA LEVEL



ROAD CLASSIFICATION  
Medium-duty ————  
Light-duty ————  
Unimproved dirt - - - - -  
State Route (circle with number)

CARNATION, WASH.  
N4737.5—W12152.5/7.5

1953

FOR SALE BY U. S. GEOLOGICAL SURVEY, DENVER 25, COLORADO OR WASHINGTON 25, D. C.  
A FOLDER DESCRIBING TOPOGRAPHIC MAPS AND SYMBOLS IS AVAILABLE ON REQUEST

JUN 20 1963

U.S.G.S.  
FILE COPY  
1953

2670