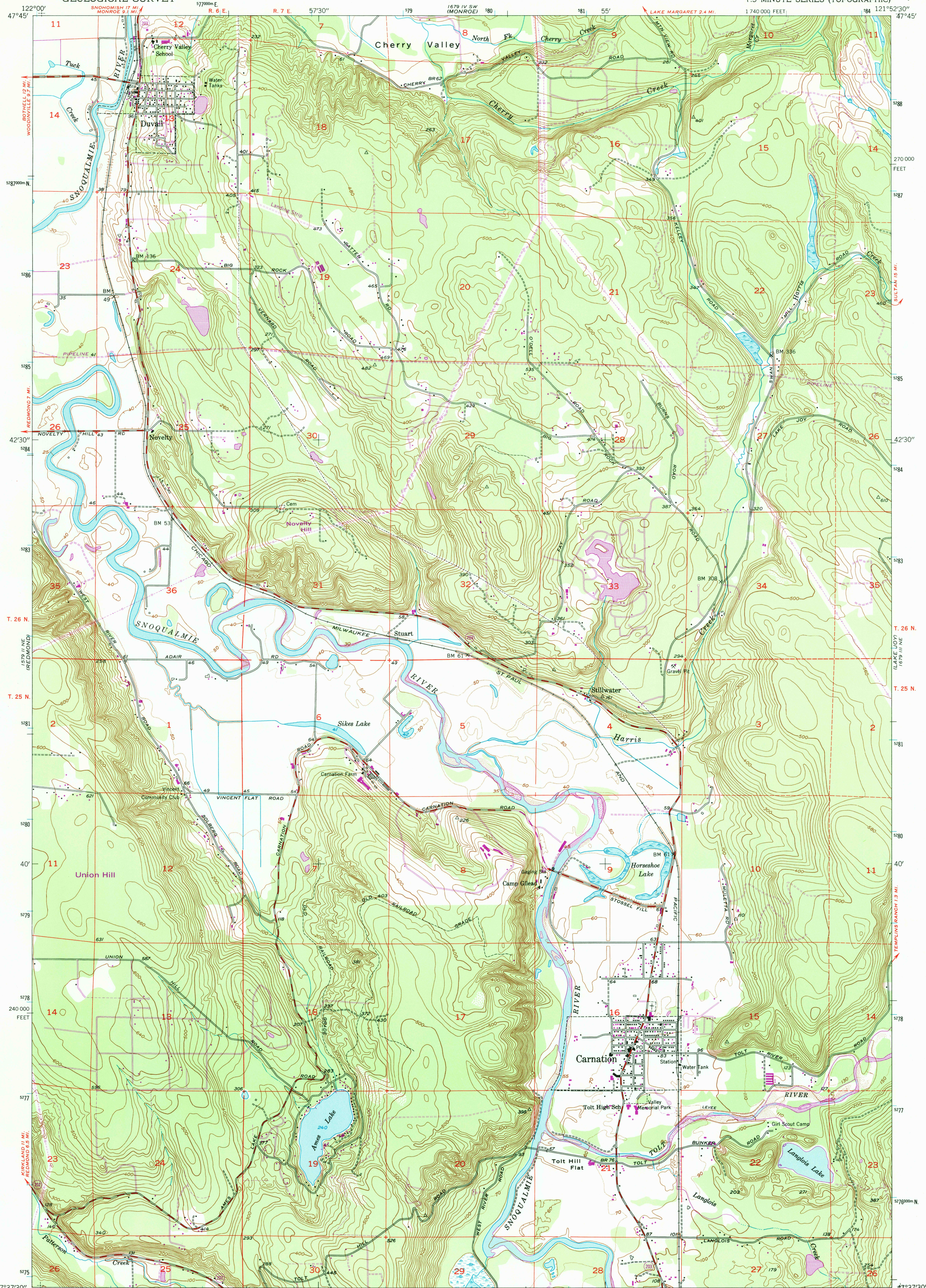


179 14 SE
179 14 SE
179 14 SE

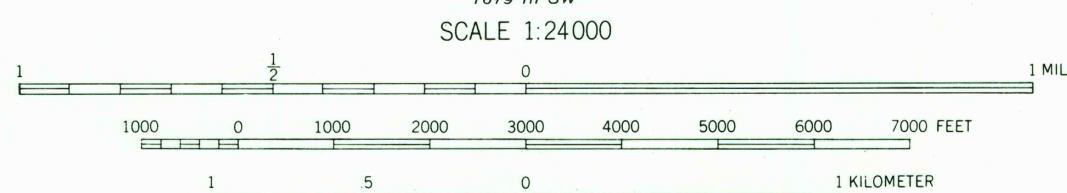
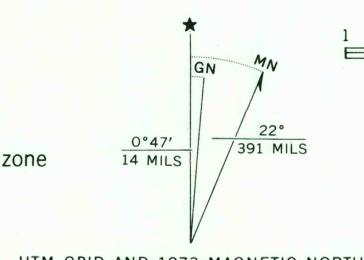
UNITED STATES
DEPARTMENT OF THE INTERIOR
GEOLOGICAL SURVEY

CARNATION QUADRANGLE
WASHINGTON—KING CO.
7.5 MINUTE SERIES (TOPOGRAPHIC)

179 14 SE
179 14 SE
179 14 SE



Maped, edited, and published by the Geological Survey
Control by USGS and USC&GS
Topography from aerial photographs by multiplex methods
Aerial photographs taken 1952. Field check 1953
Polyconic projection. 1927 North American datum
10,000-foot grid based on Washington coordinate system, north zone
1000-meter Universal Transverse Mercator grid ticks,
zone 10, shown in blue
To place on the predicted North American Datum 1983
move the projection lines 22 meters north and
92 meters east as shown by dashed corner ticks
Dashed land lines indicate approximate locations
Revisions shown in purple compiled from aerial photographs
taken 1968 and 1973. This information not field checked



ROAD CLASSIFICATION
Medium-duty ——— Light-duty ———
Unimproved dirt - - - - -
State Route ○

CARNATION, WASH.
N4737.5—W12152.5/7.5

1953
PHOTOREVISED 1968 AND 1973
DMA 1679 III NW—SERIES 7691

FOR SALE BY U. S. GEOLOGICAL SURVEY, DENVER, COLORADO 80225, OR RESTON, VIRGINIA 22092
A FOLDER DESCRIBING TOPOGRAPHIC MAPS AND SYMBOLS IS AVAILABLE ON REQUEST