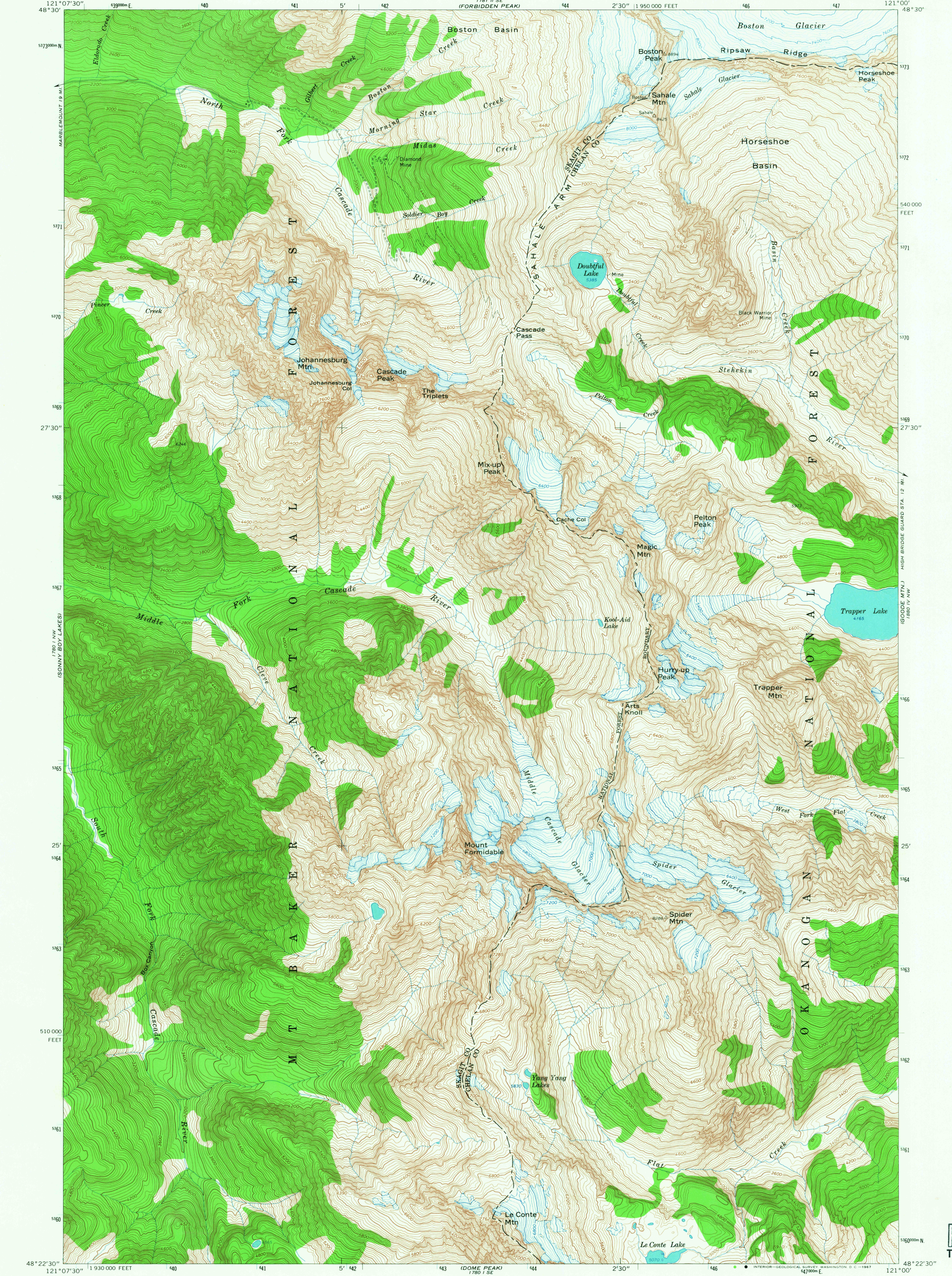


ELDORADO PEAK
1781 U SE
1781 W SW

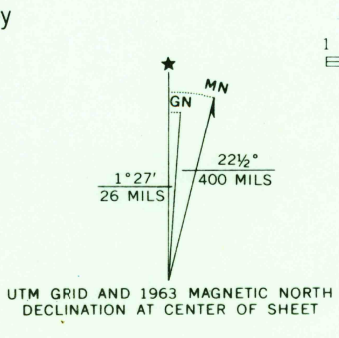
UNITED STATES
DEPARTMENT OF THE INTERIOR
GEOLOGICAL SURVEY

CASCADE PASS QUADRANGLE
WASHINGTON
7.5 MINUTE SERIES (TOPOGRAPHIC)

1881 U SE
1881 W SW
(MT. LOGAN)



Mapped, edited, and published by the Geological Survey
Control by USGS and USC&GS
Topography by photogrammetric methods from aerial
photographs taken 1958. Field checked 1963
Polyconic projection. 1927 North American datum
10,000-foot grid based on Washington coordinate system,
north zone
1000-meter Universal Transverse Mercator grid ticks,
zone 10, shown in blue
Where omitted, land lines have not been established



SCALE 1:24000
CONTOUR INTERVAL 40 FEET
DATUM IS MEAN SEA LEVEL
FOR SALE BY U. S. GEOLOGICAL SURVEY, DENVER, COLORADO 80225, OR WASHINGTON, D. C. 20242
A FOLDER DESCRIBING TOPOGRAPHIC MAPS AND SYMBOLS IS AVAILABLE ON REQUEST

ROAD CLASSIFICATION
Light-duty ————— Unimproved dirt =
QUADRANGLE LOCATION
WASHINGTON
CASCADE PASS, WASH.
N4822.5-W12100/7.5
1963
AMS 1780 I NE—SERIES V891

U.S.G.S.
FILE COPY
TOPOGRAPHIC DIVISION

6735
AUG 17 1967