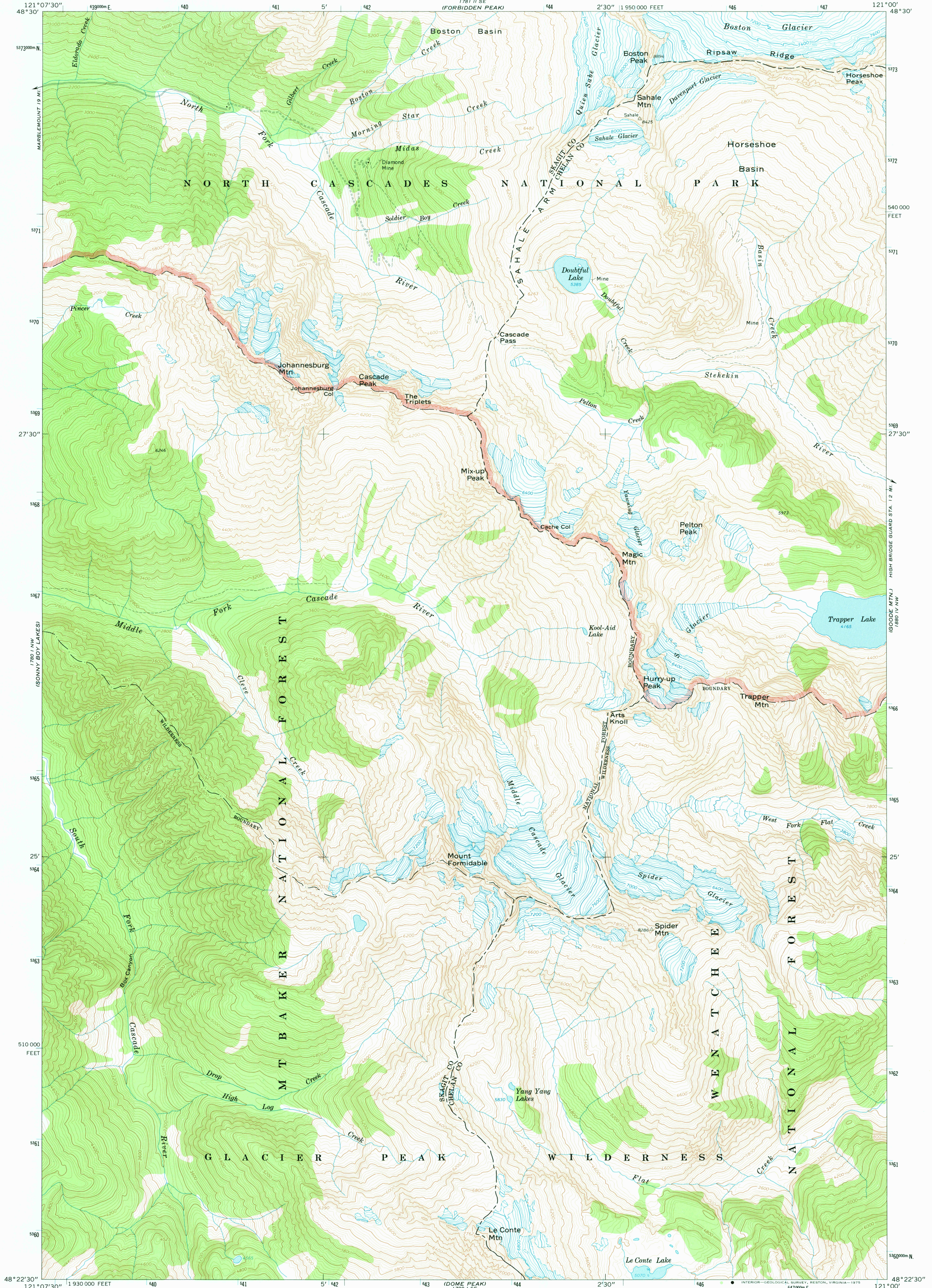
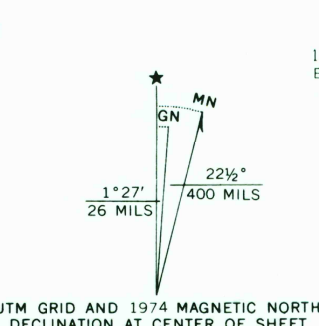


UNITED STATES
DEPARTMENT OF THE INTERIOR
GEOLOGICAL SURVEY

CASCADE PASS QUADRANGLE
WASHINGTON
7.5 MINUTE SERIES (TOPOGRAPHIC)



Maped, edited, and published by the Geological Survey
Control by USGS and NOS/NOAA
Topography by photogrammetric methods from aerial
photographs taken 1958. Field checked 1963
Polyconic projection. 1927 North American datum
10,000-foot grid based on Washington coordinate system,
north zone
1000-meter Universal Transverse Mercator grid ticks,
zone 10, shown in blue
Where omitted, land lines have not been established



SCALE 1:24,000
1 MILE
7000 FEET
6000
5000
4000
3000
2000
1000
0
1 KILOMETER
CONTOUR INTERVAL 40 FEET
NATIONAL GEODETIC VERTICAL DATUM OF 1929



ROAD CLASSIFICATION
Light-duty ——— Unimproved dirt ———

CASCADE PASS, WASH.
N4822.5—W12100/7.5

U.S. GEOLOGICAL SURVEY
TOPOGRAPHIC DIVISION

1963
MINOR CORRECTIONS MADE 1974
AMS 1780 1 NE—SERIES V891

JUN 13 1975

9105