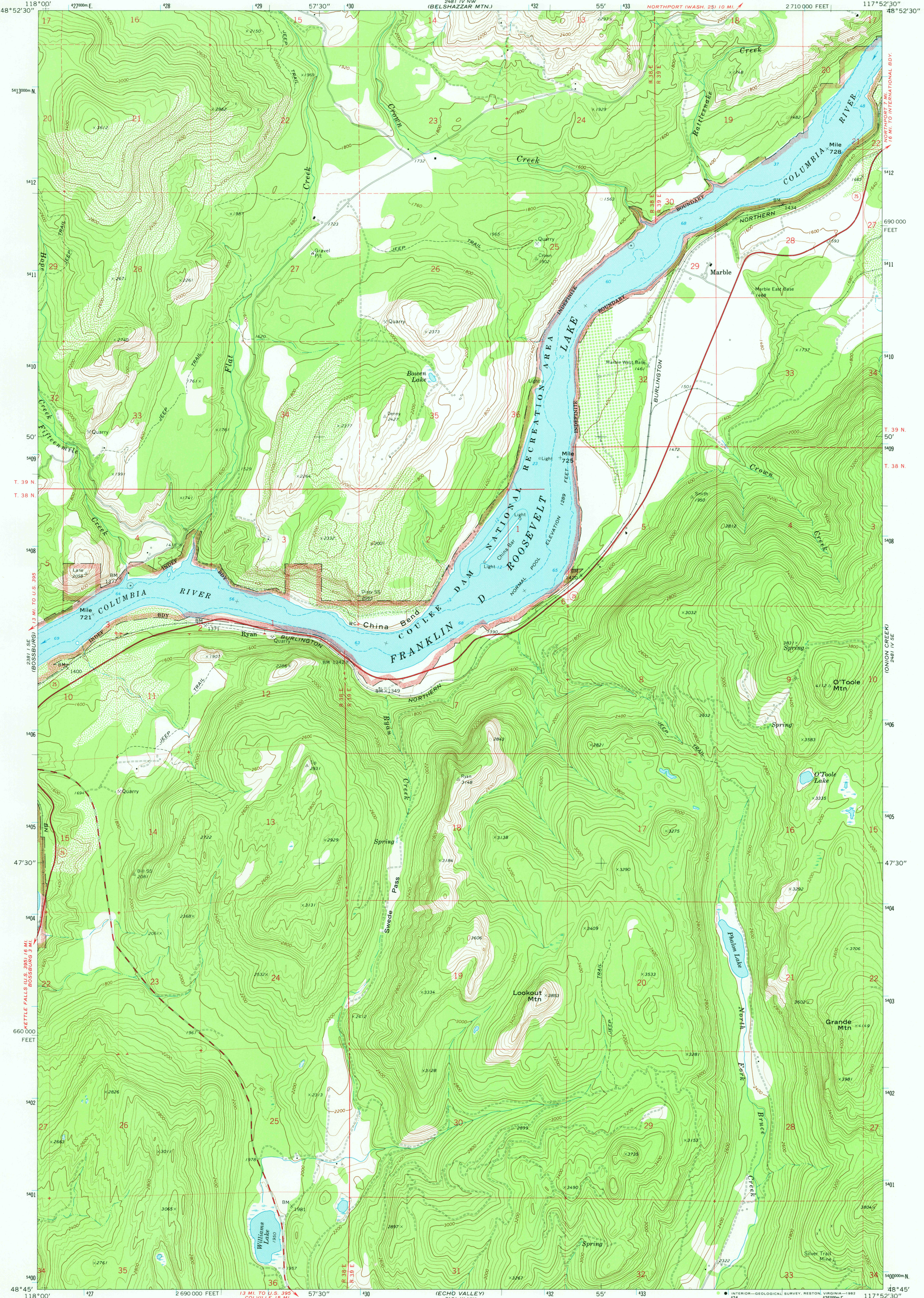
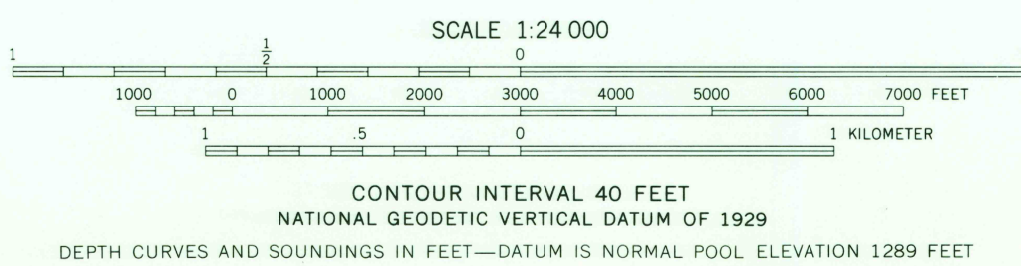


UNITED STATES
DEPARTMENT OF THE INTERIOR
GEOLOGICAL SURVEY

CHINA BEND QUADRANGLE
WASHINGTON—STEVENS CO.
7.5 MINUTE SERIES (TOPOGRAPHIC)



Mapped, edited, and published by the Geological Survey
Control by USGS, USC&GS, and US Bureau of Reclamation
Topography by photogrammetric methods from aerial
photographs taken 1965. Field checked 1969
Selected hydrographic data compiled from USC&GS
Chart 6169 (1968). This information is not intended
for navigational purposes
Polyconic projection. 1927 North American datum
10,000-foot grid based on Washington coordinate system,
north zone
1000-meter Universal Transverse Mercator grid ticks,
zone 11, shown in blue
To place on the predicted North American Datum 1983,
move the projection lines 16 meters north and
81 meters east as shown by dashed corner ticks
Dotted land lines established by private survey



ROAD CLASSIFICATION
Primary highway, all weather, hard surface
Secondary highway, all weather, hard surface
Light-duty road, all weather, improved surface
Unimproved road, fair or dry weather
State Route



CHINA BEND, WASH.
N4845—W11752.5/7.5

1969

DMA 2481 IV SW—SERIES V891

RETURN TO:
USGS AND HISTORICAL MAP ARCHIVES

DEC 06 1982

160