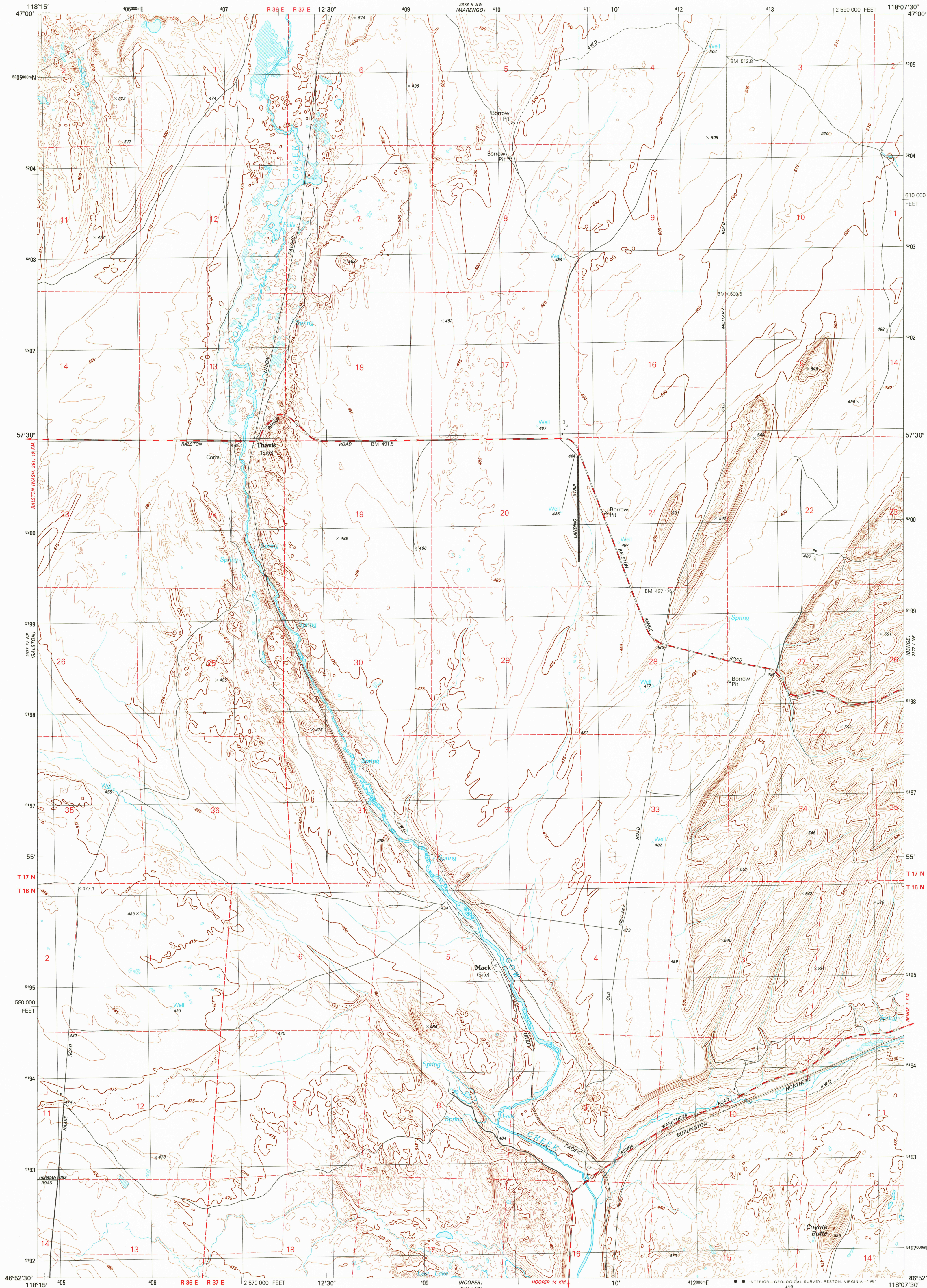


229 II SE
(RIVILLE SE)

UNITED STATES
DEPARTMENT OF THE INTERIOR
GEOLOGICAL SURVEY

COYOTE BUTTE QUADRANGLE
WASHINGTON-ADAMS CO
7.5 MINUTE SERIES (TOPOGRAPHIC)
NW/4 BERGE 15' QUADRANGLE

229 II SE
(MACALL)



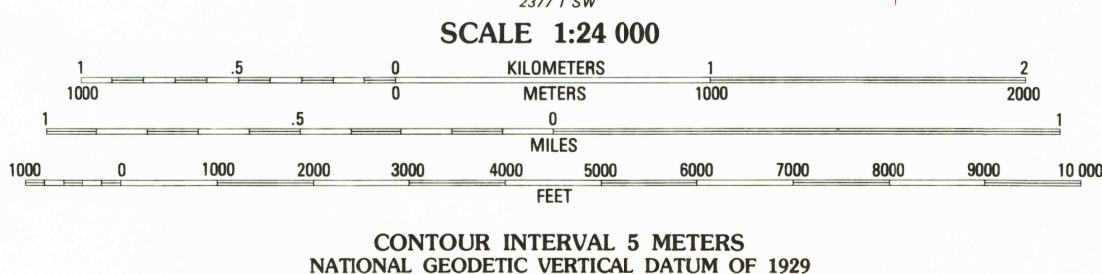
Produced by the United States Geological Survey

Control by USGS and NOS/NOAA

Compiled by photogrammetric methods from aerial
photographs taken 1975. Field checked 1976
Map edited 1981

Projection and 1000-meter grid, zone 11,
Universal Transverse Mercator
10,000-foot grid ticks based on Washington coordinate
system, south zone. 1927 North American Datum
To place on the predicted North American Datum 1983
move the projection lines 17 meters north and
82 meters east as shown by dashed corner ticks

Fine red dashed lines indicate selected fence and field lines
where generally visible on aerial photographs
This information is unchecked



ROAD CLASSIFICATION	
Primary highway, hard surface	Light-duty road, hard or improved surface
Secondary highway, hard surface	Unimproved road
Interstate Route	U. S. Route
	State Route

COYOTE BUTTE, WASH.
NW/4 BERGE 15' QUADRANGLE
N4652.5-W11807.5/7.5

1981

DMA 2377 1 NW-SERIES V891

CONTOURS AND ELEVATIONS
IN METERS

2000
JUL 9 1981
NATIONAL MAP INFORMATION
15523
REPRODUCTION
BATESMAN CANYON
2077 SE