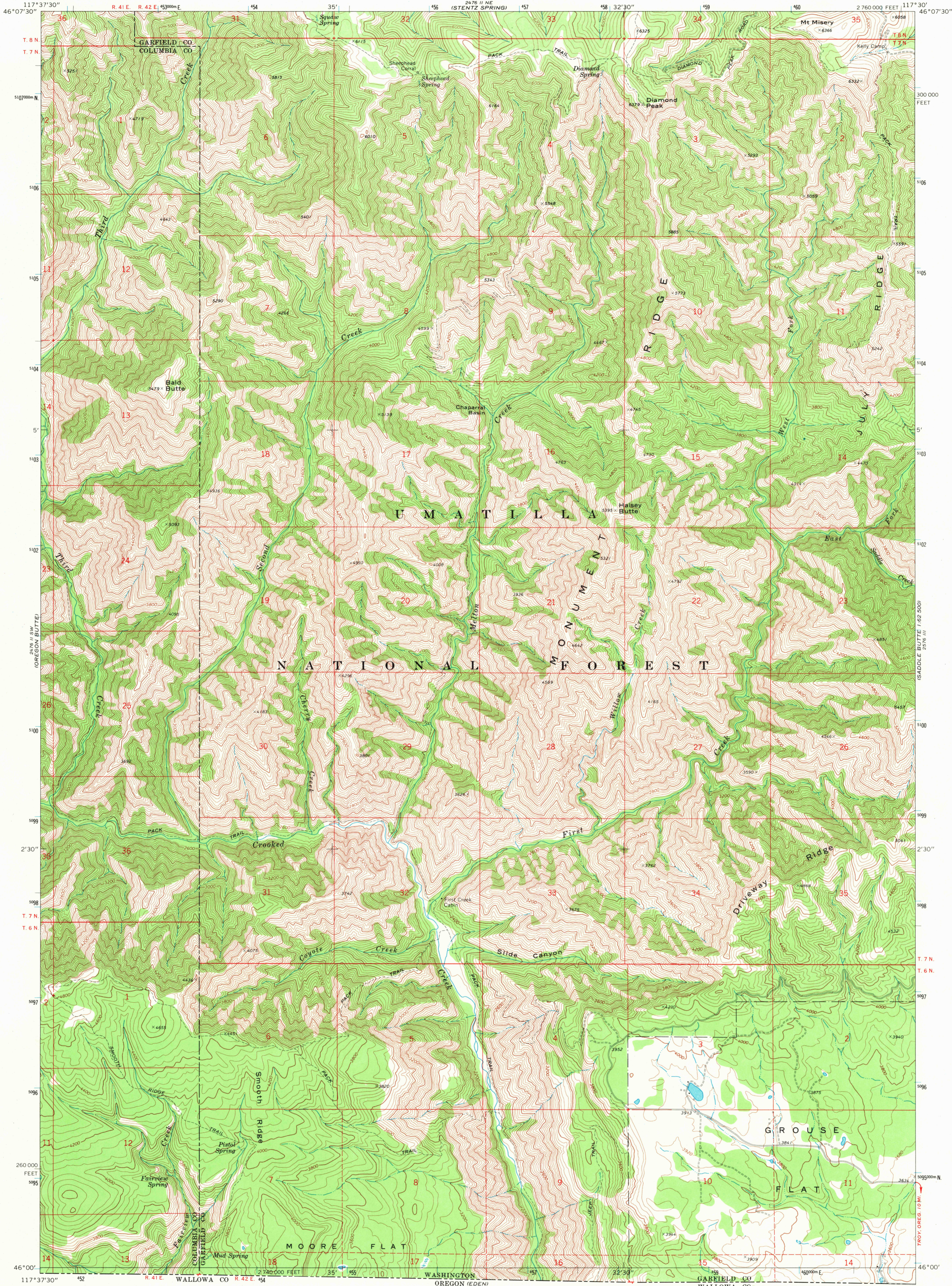
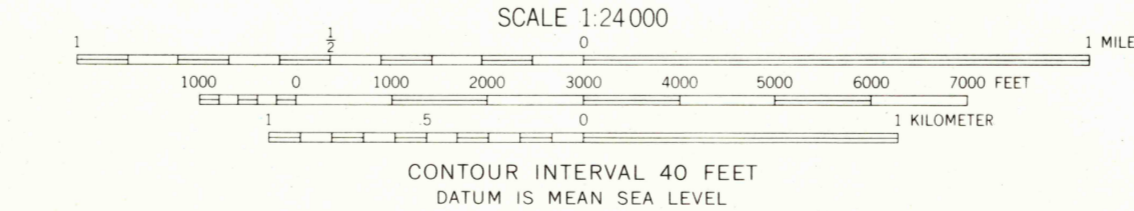
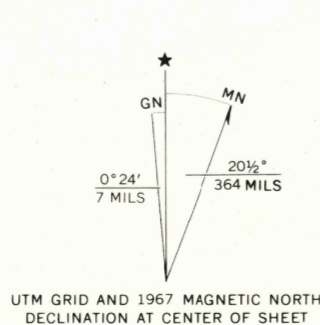


UNITED STATES
DEPARTMENT OF THE INTERIOR
GEOLOGICAL SURVEY

DIAMOND PEAK QUADRANGLE
WASHINGTON
7.5 MINUTE SERIES (TOPOGRAPHIC)



Mapped, edited, and published by the Geological Survey
Control by USGS and USC&GS
Topography by photogrammetric methods from aerial
photographs taken 1966. Field checked 1967
Polyconic projection. 1927 North American datum
10,000-foot grid based on Washington coordinate system,
south zone
1000-meter Universal Transverse Mercator grid ticks,
zone 11, shown in blue



USGS
HISTORICAL FILE
TOPOGRAPHIC DIVISION

DIAMOND PEAK, WASH.
N4600—W11730/7.5

1967

AMS 2476 II SE—SERIES V891

USGS
HISTORICAL FILE
TOPOGRAPHIC DIVISION

2575
SEP 3 1971