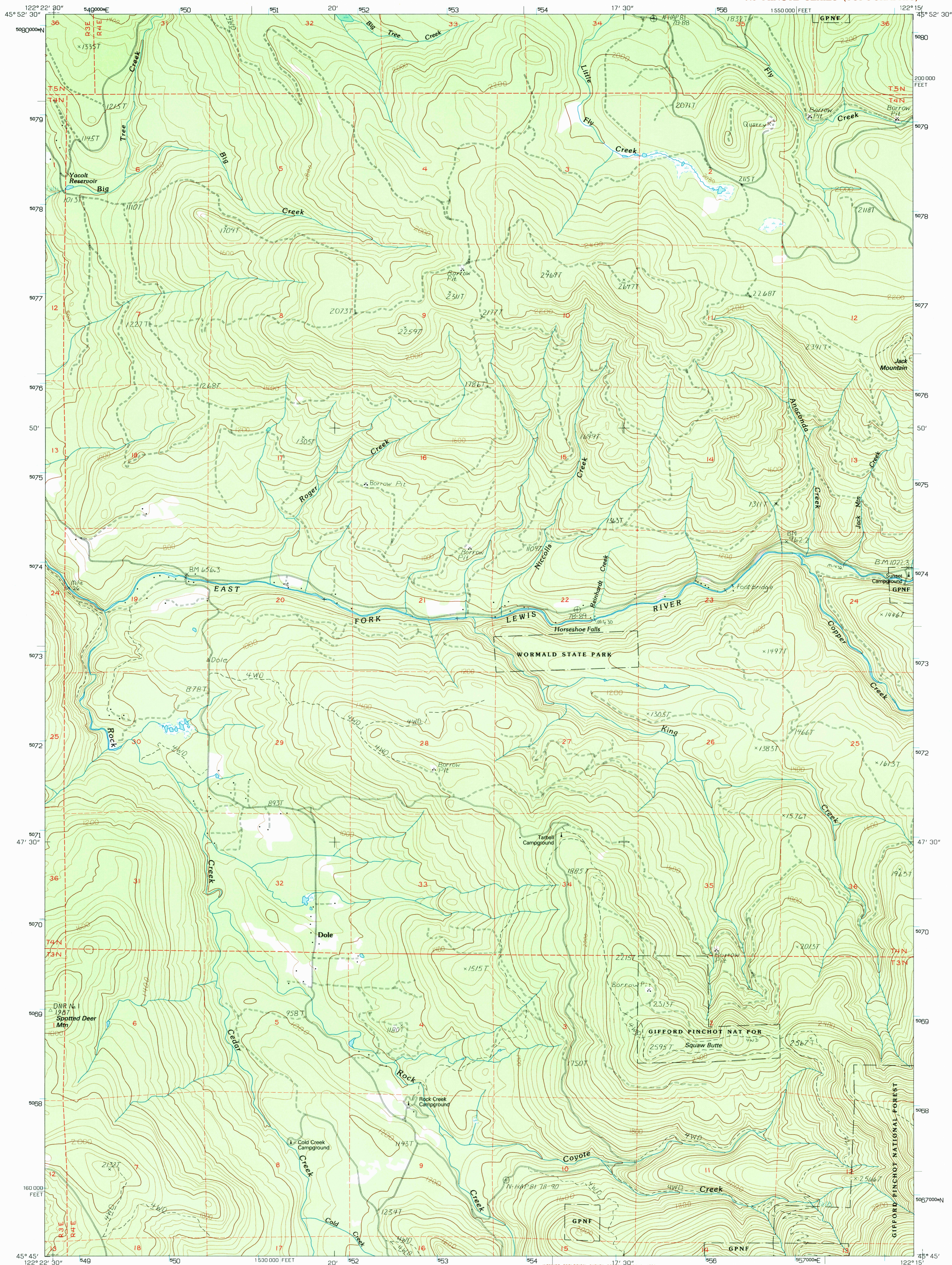


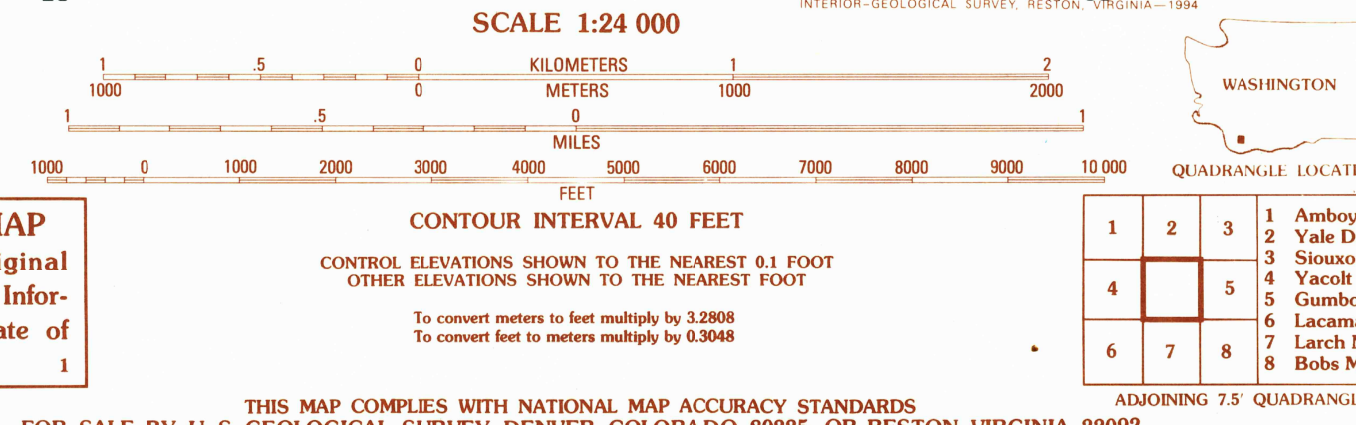
UNITED STATES  
DEPARTMENT OF THE INTERIOR  
GEOLOGICAL SURVEY

DOLE QUADRANGLE  
WASHINGTON - CLARK CO.  
7.5 MINUTE SERIES (TOPOGRAPHIC)



PRODUCED BY THE UNITED STATES GEOLOGICAL SURVEY  
CONTROL BY ..... USGS, NOS/NOAA  
COMPILED FROM AERIAL PHOTOGRAPHS TAKEN ..... 1981-82  
FIELD CHECKED ..... 1984. MAP EDITED ..... 1986  
PROJECTION ..... LAMBERT CONFORMAL CONIC  
BLUE 1000-METER UNIVERSAL TRANSVERSE MERCATOR TICS ..... ZONE 10  
10 000-FOOT STATE GRID TICS ..... WASHINGTON, SOUTH ZONE  
UTM GRID DECLINATION ..... 0° 30' EAST  
1994 MAGNETIC NORTH DECLINATION ..... 18° 30' EAST  
VERTICAL DATUM ..... NATIONAL GEODETIC VERTICAL DATUM OF 1929  
HORIZONTAL DATUM ..... NORTH AMERICAN DATUM OF 1927 (NAD 27)  
North American Datum of 1983 (NAD 83) is shown by dashed corner ticks. The  
values of the shift between NAD 27 and NAD 83 for 7.5-minute intersections are  
obtainable from National Geodetic Survey NADCON software.  
There may be private inholdings within the boundaries of any Federal and State  
reservations shown on this map.  
No distinction made between houses, barns, and other buildings.  
Photorevised from 1990 source; no major culture or drainage changes observed.  
Boundaries and names verified 1994.

**PROVISIONAL MAP**  
Produced from original  
manuscript drawings. Infor-  
mation shown as of date of  
photography.



**ROAD LEGEND**  
Improved Road .....  
Unimproved Road .....  
Trail .....  
Interstate Route ..... U.S. Route ..... State Route .....  
**DOLE, WA**  
**PROVISIONAL EDITION 1986**  
45122-G3-TF-024  
MINOR REVISION 1994

