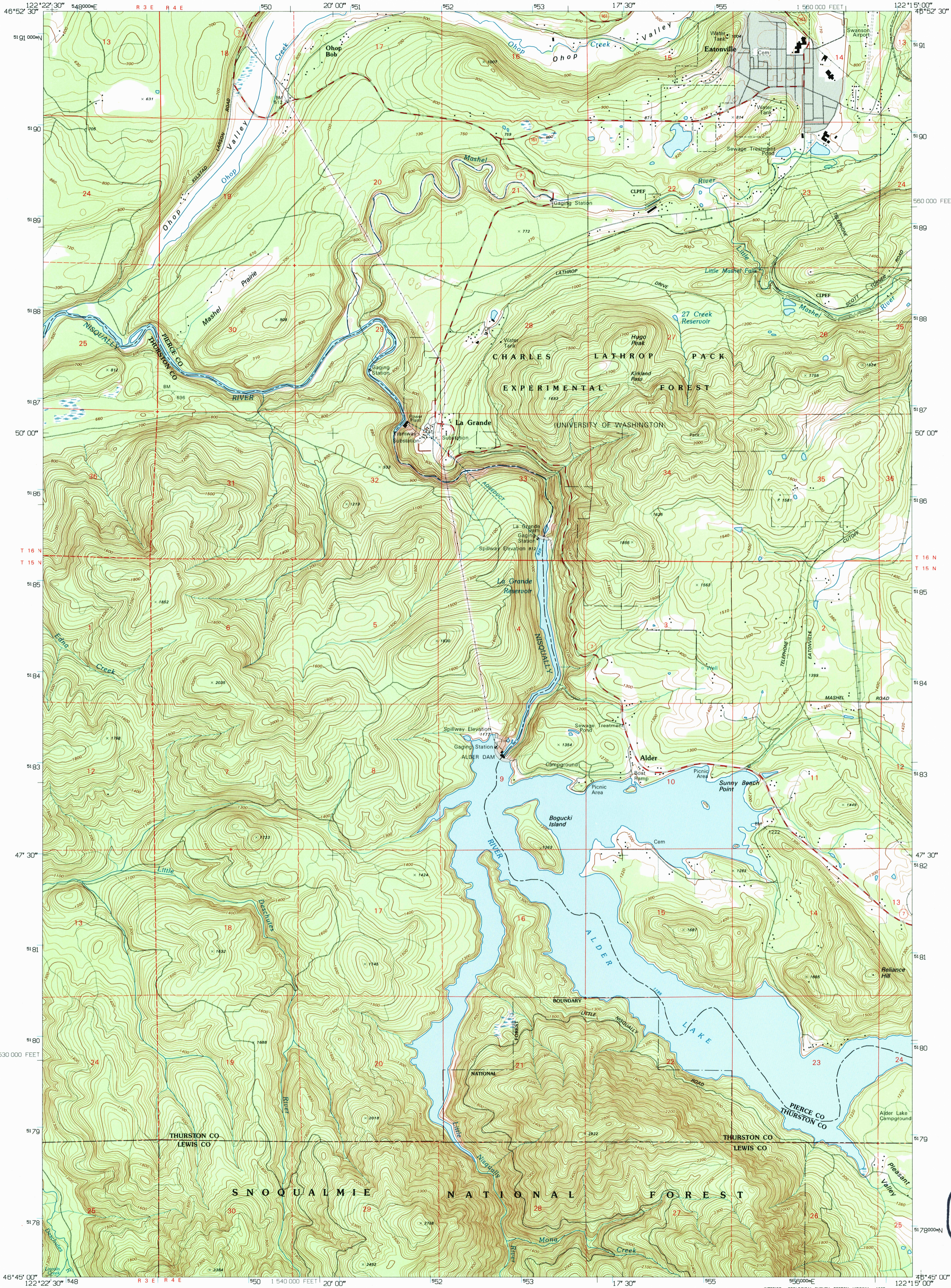
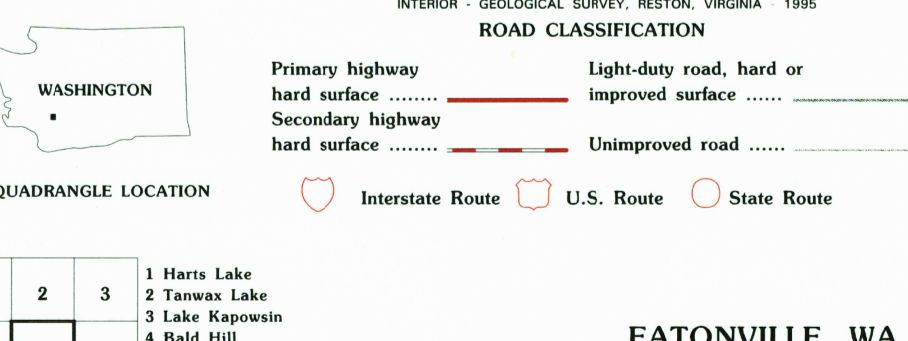
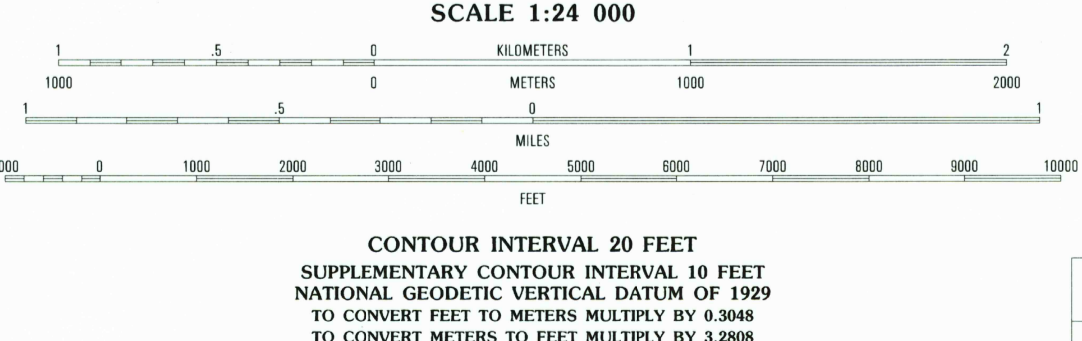
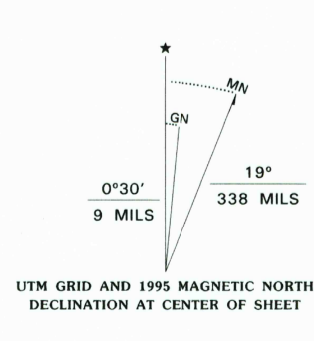


UNITED STATES
DEPARTMENT OF THE INTERIOR
GEOLOGICAL SURVEY

EATONVILLE QUADRANGLE
WASHINGTON
7.5-MINUTE SERIES (TOPOGRAPHIC)

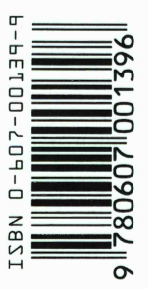


Produced by the United States Geological Survey
Control by USGS, NOS/NOAA and USCE
Compiled from imagery dated 1957. Revised from imagery dated 1990. PLSS and survey control current as of 1965. Map edited 1995. Contours and land elevations have not been revised and may conflict with other content.
North American Datum of 1927 (NAD 27). Projection and blue 1000-meter ticks: Universal Transverse Mercator, zone 10 10 000-foot ticks: Washington Coordinate System, south zone North American Datum of 1983 (NAD 83) is shown by dashed corner ticks. The values of the shift between NAD 27 and NAD 83 for 7.5-minute intersections are obtainable from National Geodetic Survey NADCON software.
There may be private inholdings within the boundaries of the National or State reservations shown on this map.



1	2	3	1 Hart Lake
4	5	2 Tanaw Lake	
6	7	3 Lake Kapowain	
		4 Bald Hill	
		5 Elbe	
		6 Newaukum Lake	
		7 The Rockies	
		8 Mineral	

USGS HISTORICAL
MAP ARCHIVES
JUN 21 1995
REC'D FILE COPY



THIS MAP COMPLIES WITH NATIONAL MAP ACCURACY STANDARDS
FOR SALE BY U.S. GEOLOGICAL SURVEY
DENVER, COLORADO 80225, OR RESTON, VIRGINIA 22092
A FOLDER DESCRIBING TOPOGRAPHIC MAPS AND SYMBOLS IS AVAILABLE ON REQUEST

EATONVILLE, WA
46122-G3-TF-024
1990
DMA 1577 IV SE-SERIES Y891