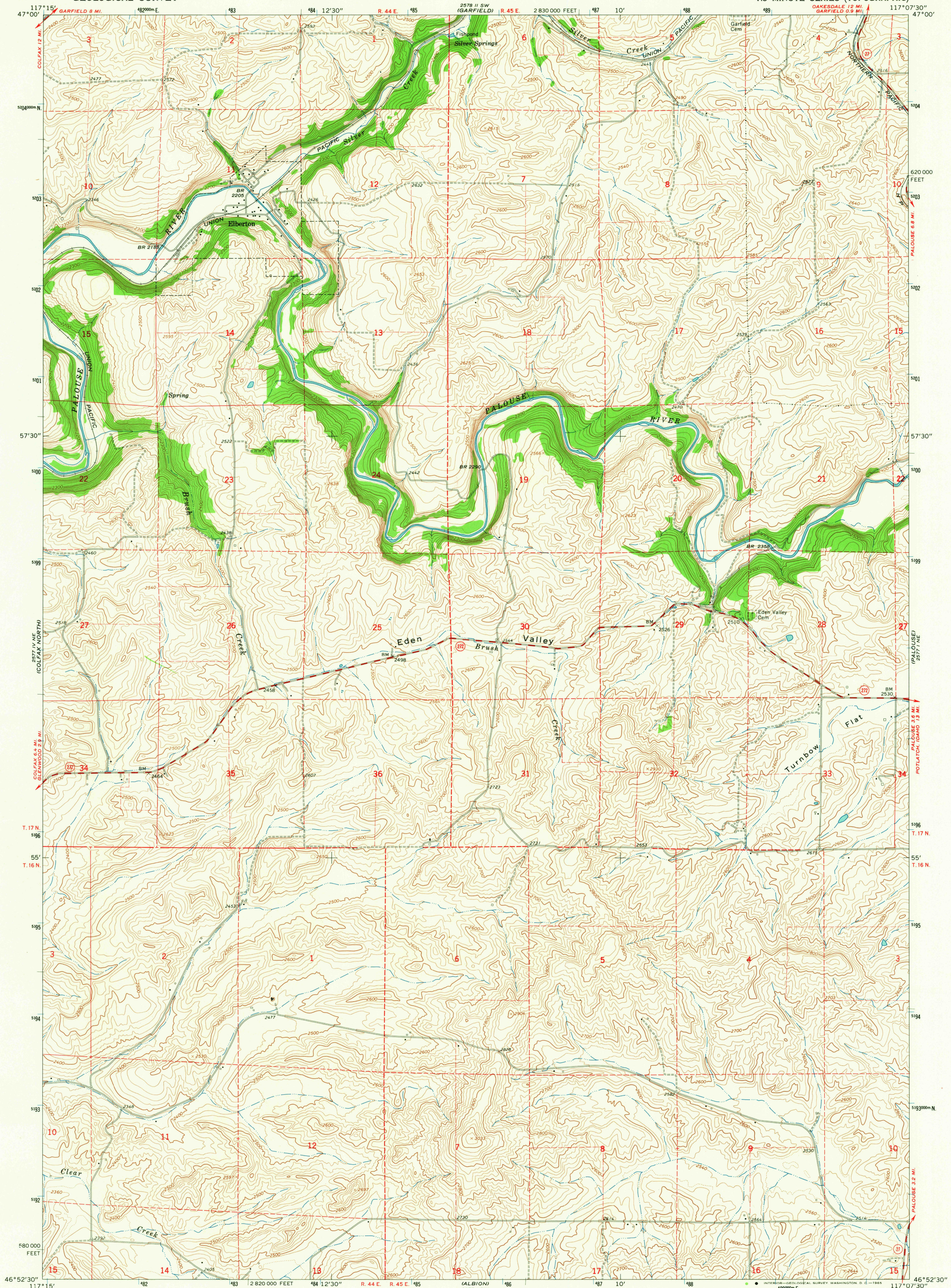


UNITED STATES  
DEPARTMENT OF THE INTERIOR  
GEOLOGICAL SURVEY

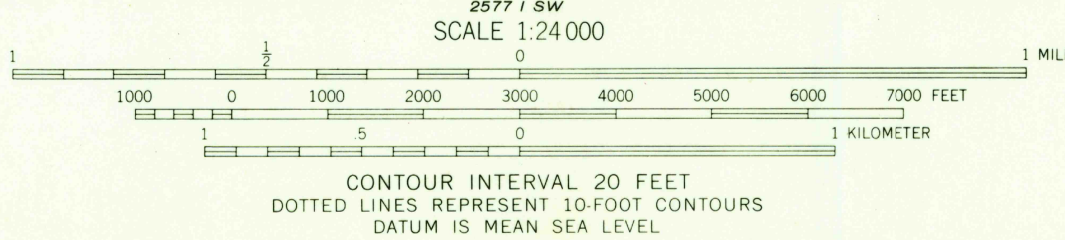
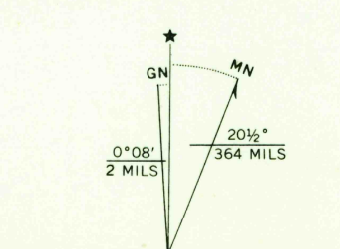
ELBERTON QUADRANGLE  
WASHINGTON-WHITMAN CO.  
7.5 MINUTE SERIES (TOPOGRAPHIC)



Mapped, edited, and published by the Geological Survey  
Control by USGS and USC&GS

Topography by photogrammetric methods from aerial  
photographs taken 1961. Field checked 1964

Polyconic projection. 1927 North American datum  
10,000-foot grid based on Washington coordinate system,  
south zone  
1000-meter Universal Transverse Mercator grid ticks,  
zone 11, shown in blue  
Fine red dashed lines indicate selected fence lines



ROAD CLASSIFICATION  
Medium-duty ——— Light-duty ———  
Unimproved dirt ———  
State Route ———

ELBERTON, WASH.  
N4652.5—W11707.5/7.5

1964

AMS 2577 I NW—SERIES V891



USGS  
Historical File  
Topographic Division

2585  
JUN 10 1965  
U.S.G.S.  
FILE COPY  
TOPOGRAPHIC DIVISION