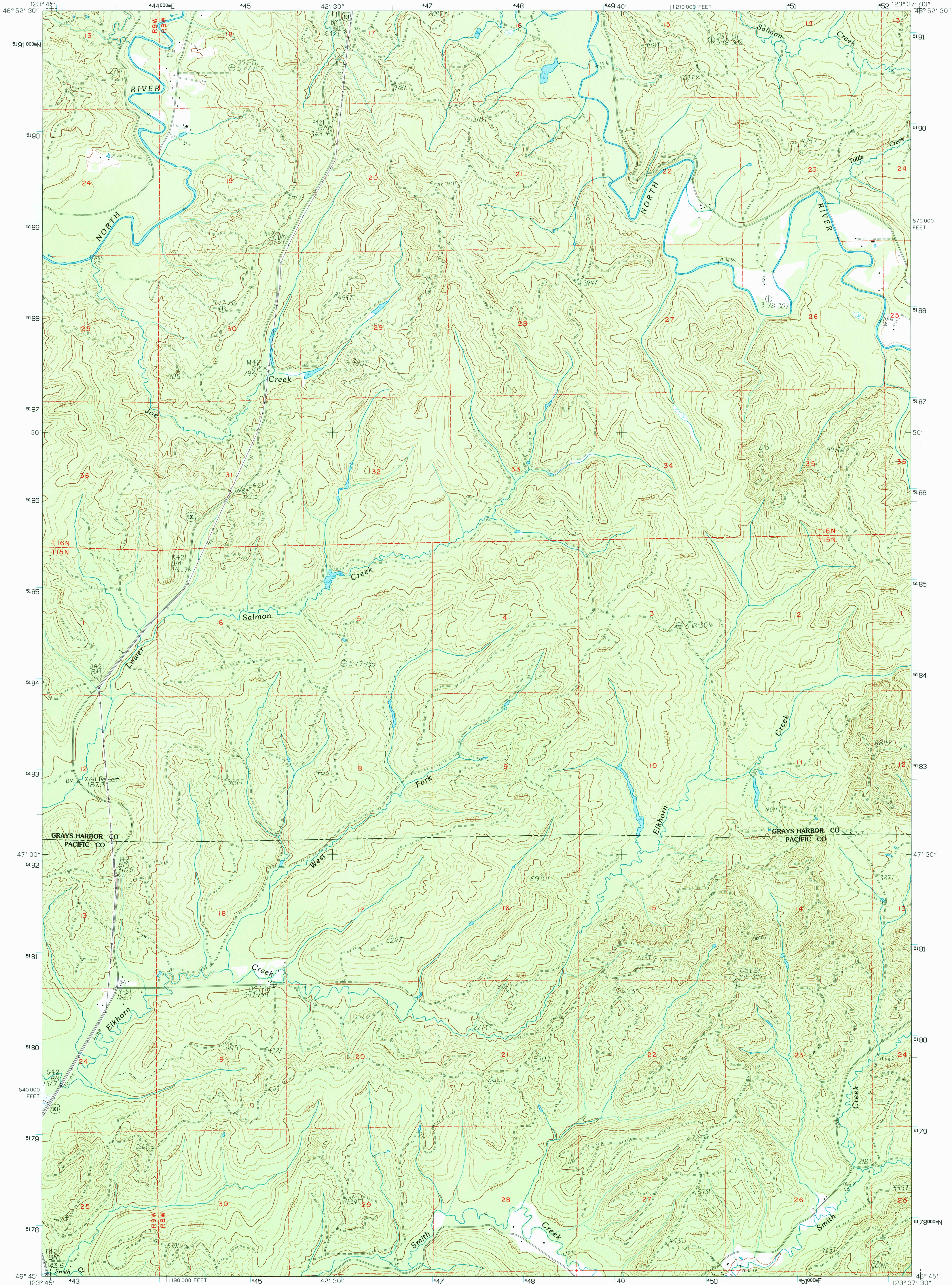


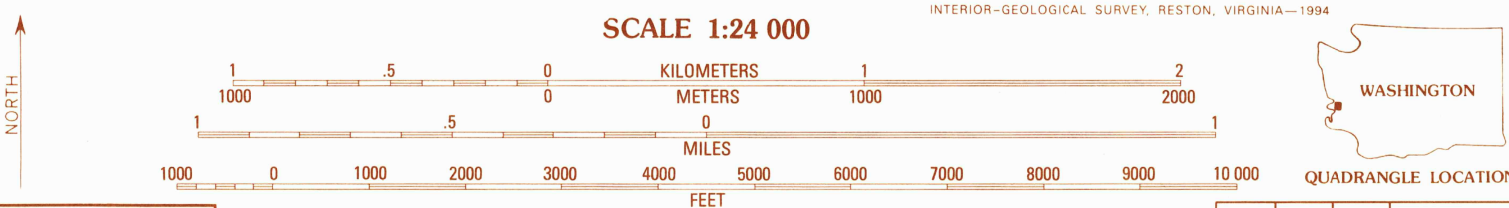
UNITED STATES
DEPARTMENT OF THE INTERIOR
GEOLOGICAL SURVEY

ELKHORN CREEK QUADRANGLE
WASHINGTON
7.5 MINUTE SERIES (TOPOGRAPHIC)



PRODUCED BY THE UNITED STATES GEOLOGICAL SURVEY
CONTROL BY USGS NOS/NOAA
COMPILED FROM AERIAL PHOTOGRAPHS TAKEN 1983
FIELD CHECKED 1985. MAP EDITED 1986
PROJECTION LAMBERT CONFORMAL CONIC
BLUE 1000-METER UNIVERSAL TRANSVERSE MERCATOR TICS. ZONE 10
10 000-FOOT STATE GRID TICS WASHINGTON, SOUTH ZONE
UTM GRID DECLINATION 0° 30' WEST
1993 MAGNETIC NORTH DECLINATION 19° 30' EAST
VERTICAL DATUM NATIONAL GEODETIC VERTICAL DATUM OF 1929
HORIZONTAL DATUM NORTH AMERICAN DATUM OF 1927 (NAD 27)
North American Datum of 1983 (NAD 83) is shown by
dashed corner ticks. The values of the shift between NAD
27 and NAD 83 for 7.5-minute intersections are obtainable
from National Geodetic Survey NADCON software.
There may be private inholdings within the boundaries of
any Federal and State reservations shown on this map.
No distinction made between houses, barns, and other
buildings.

PROVISIONAL MAP
Produced from original
manuscript drawings. Infor-
mation shown as of date of
photography.



SCALE 1:24 000
KILOMETERS
METERS
MILES
CONTOUR INTERVAL 40 FEET
CONTROL ELEVATIONS SHOWN TO THE NEAREST 0.1 FOOT
OTHER ELEVATIONS SHOWN TO THE NEAREST FOOT
To convert meters to feet multiply by 3.2808
To convert feet to meters multiply by 0.3048
FOR SALE BY U.S. GEOLOGICAL SURVEY
DENVER, COLORADO 80225 OR RESTON, VIRGINIA 22092

1	2	3	1	Aberdeen
2	3	4	2	Central Park
3	4	5	3	Montesano
4	5	6	4	Aberdeen SE
5	6	7	5	Brooklyn
6	7	8	6	South Bend
7	8	9	7	Raymond
8	9	10	8	East of Raymond

ROAD LEGEND
Improved Road
Unimproved Road
Trail
Interstate Route U.S. Route State Route

ELKHORN CREEK, WASH.
PROVISIONAL EDITION 1986

46123-G6-TF-024
MINOR REVISION 1993

