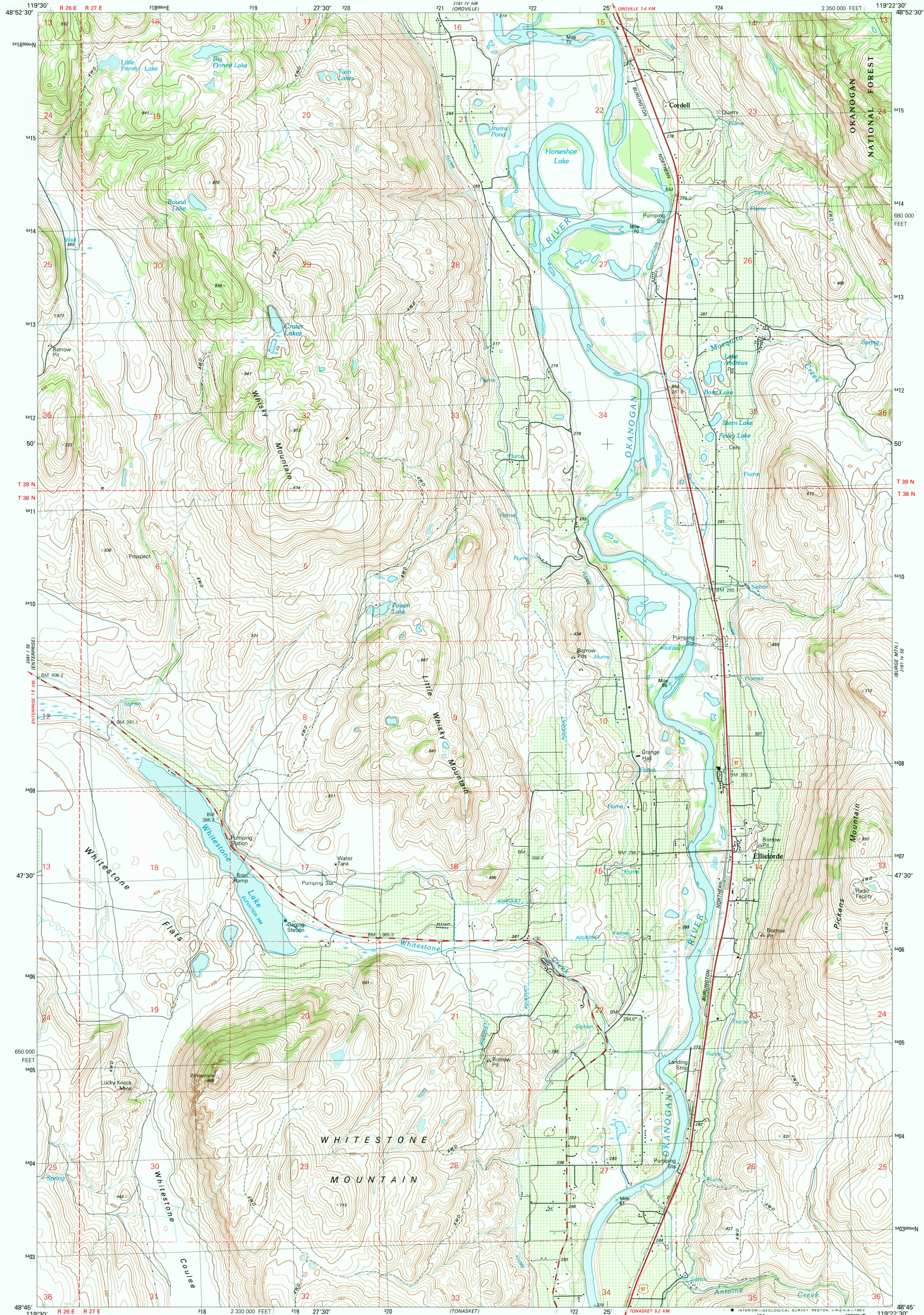


UNITED STATES
DEPARTMENT OF THE INTERIOR
GEOLOGICAL SURVEY

ELLISFORDE QUADRANGLE
WASHINGTON-OKANOGAN CO.
7.5 MINUTE SERIES (TOPOGRAPHIC)
SW/4 OKORVILLE 15' QUADRANGLE



Produced by the United States Geological Survey

Control by USGS and NOS/NOAA

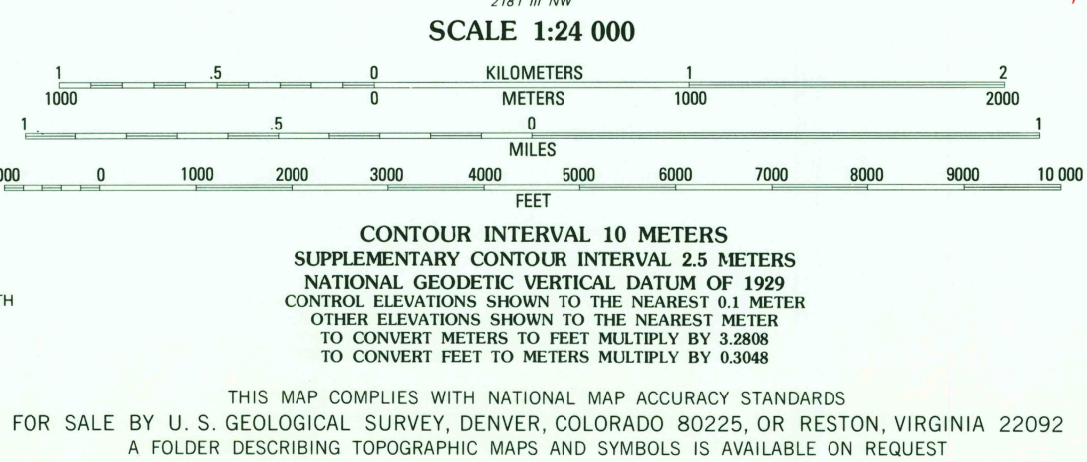
Compiled by photogrammetric methods from aerial photographs taken 1974-75. Field checked 1976. Map edited 1981

Projection and 1000-meter grid, zone 11, Universal Transverse Mercator

10,000-foot grid ticks based on Washington coordinate system, north zone. 1927 North American Datum

To place on the predicted North American Datum 1983 move the projection lines 19 meters north and 85 meters east as shown by dashed corner ticks

There may be private inholdings within the boundaries of the National or State reservations shown on this map



ROAD CLASSIFICATION
Primary highway, hard surface
Secondary highway, hard surface
Unimproved road
Interstate Route
U. S. Route
State Route
Light-duty road, hard or improved surface

ELLISFORDE, WASH.
SW/4 OKORVILLE 15' QUADRANGLE
N4845-W11922.5/7.5

1982

DMA 2181 IV SW-SERIES V891

RETURN TO :
USGS AND HISTORICAL MAP ARCHIVES

DEC 17 1982

2050