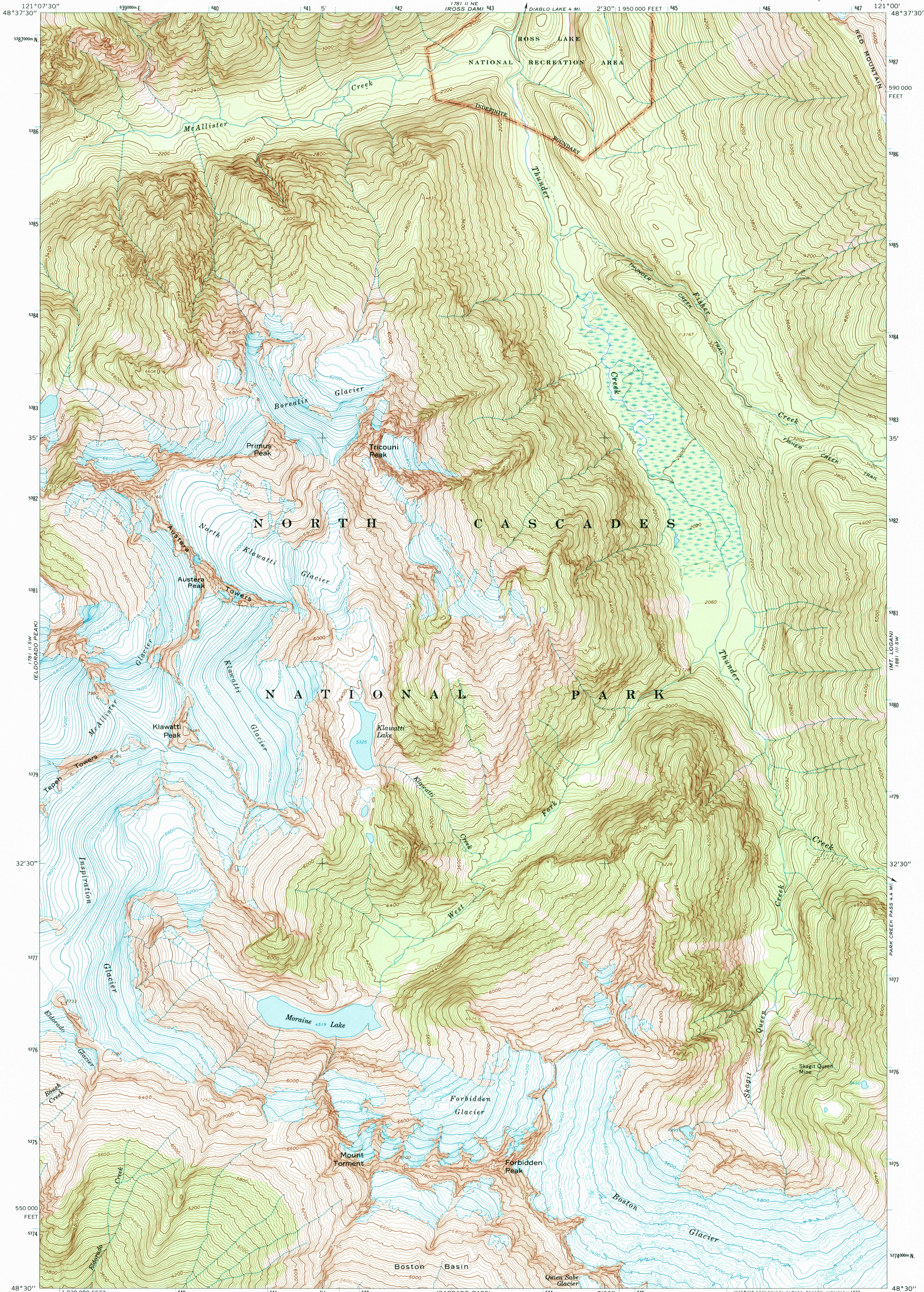


1781 II NW
(DIABLO DAM)

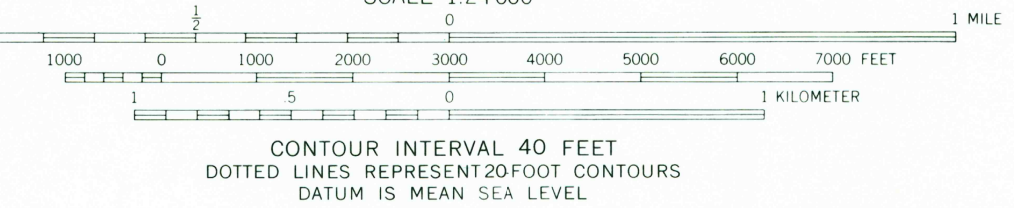
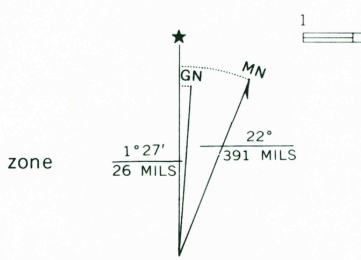
UNITED STATES
DEPARTMENT OF THE INTERIOR
GEOLOGICAL SURVEY

FORBIDDEN PEAK QUADRANGLE
WASHINGTON-SKAGIT CO.
7.5 MINUTE SERIES (TOPOGRAPHIC)

1781 III NW
(CRATER MOUNTAIN)



Mapped, edited, and published by the Geological Survey
Control by USGS and USC&GS
Topography by photogrammetric methods from aerial
photographs taken 1958. Field checked 1963
Polyconic projection. 1927 North American datum
10,000-foot grid based on Washington coordinate system, north zone
1000-meter Universal Transverse Mercator grid ticks,
zone 10, shown in blue
Land lines have not been established in this area



ROAD CLASSIFICATION
Trails

USGS AND HISTORICAL
MAP ARCHIVES
JUN 3 1996
REC'D FILE COPY

FOR SALE BY U.S. GEOLOGICAL SURVEY
DENVER, COLORADO 80225, OR RESTON, VIRGINIA 22092
A FOLDER DESCRIBING TOPOGRAPHIC MAPS AND SYMBOLS IS AVAILABLE ON REQUEST

FORBIDDEN PEAK, WASH.
N4830-W12100/7.5

1963
MINOR CORRECTIONS MADE 1973
AMS 1781 II SE-SERIES V891

