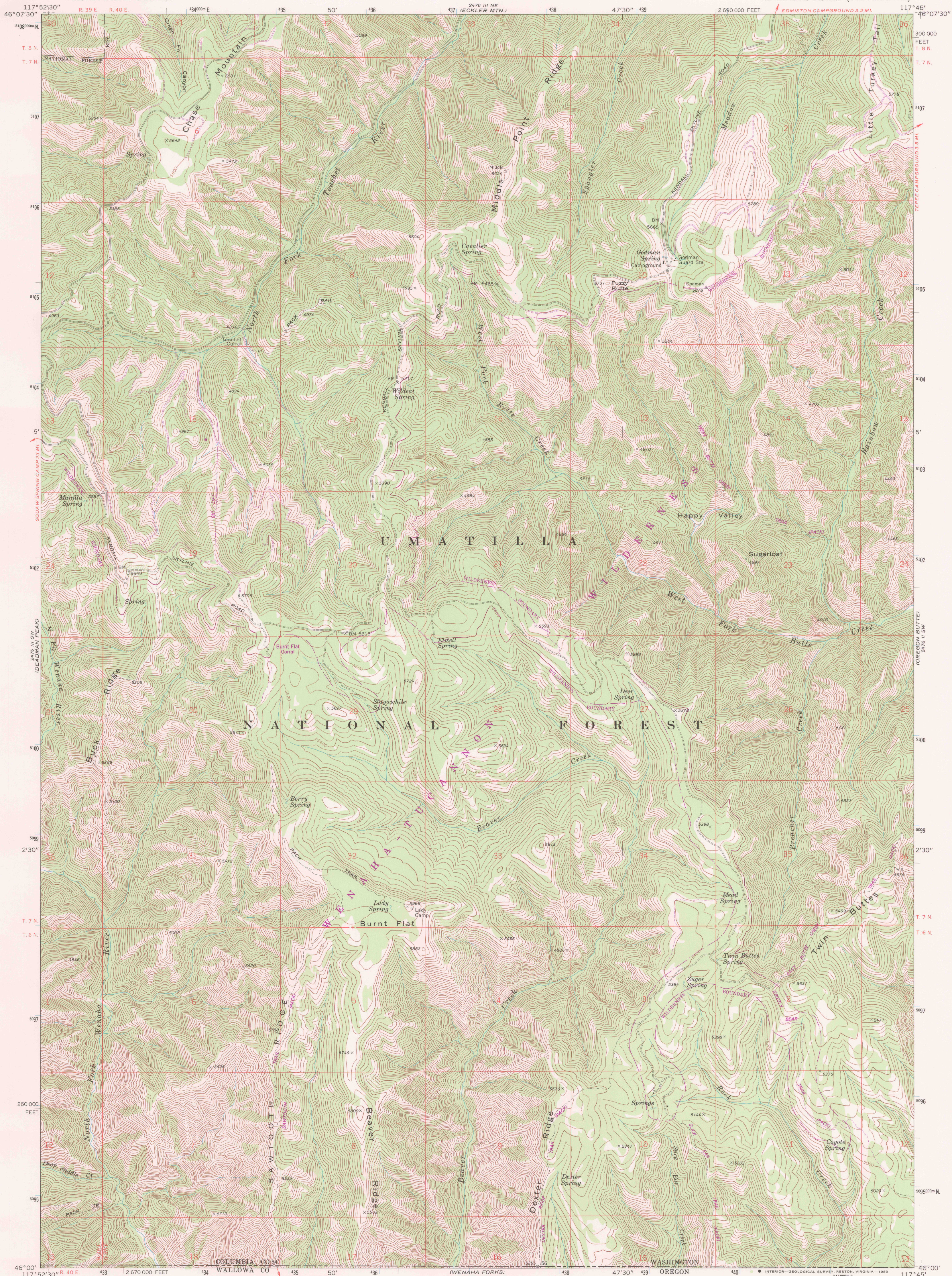


UNITED STATES  
DEPARTMENT OF THE INTERIOR  
GEOLOGICAL SURVEY

GODMAN SPRING QUADRANGLE  
WASHINGTON—OREGON  
7.5 MINUTE SERIES (TOPOGRAPHIC)



Maped, edited, and published by the Geological Survey

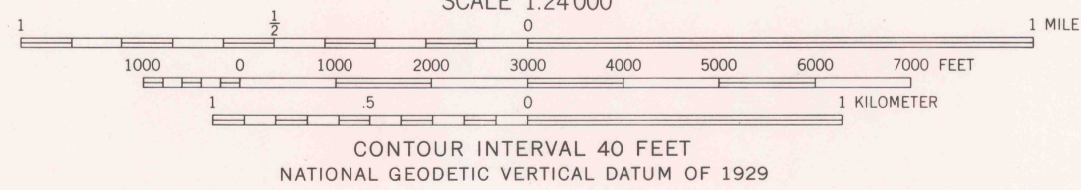
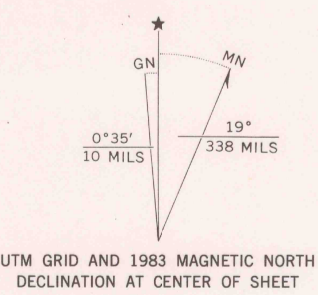
Control by USGS and NOS/NOAA

Topography by photogrammetric methods from aerial photographs taken 1966. Field checked 1967

Polyconic projection. 1927 North American datum 10,000-foot grid based on Washington coordinate system, south zone 1000-meter Universal Transverse Mercator grid ticks, zone 11, shown in blue

To place on the predicted North American Datum 1983 move the projection lines 17 meters north and 80 meters east as shown by dashed corner ticks

There may be private inholdings within the boundaries of the National or State reservations shown on this map



THIS MAP COMPLIES WITH NATIONAL MAP ACCURACY STANDARDS  
FOR SALE BY U. S. GEOLOGICAL SURVEY, DENVER, COLORADO 80225, OR RESTON, VIRGINIA 22092  
A FOLDER DESCRIBING TOPOGRAPHIC MAPS AND SYMBOLS IS AVAILABLE ON REQUEST



Revisions shown in purple and woodland compiled from aerial photographs taken 1981 and other source data. Partial field check by U.S. Forest Service. Map edited 1983

ROAD CLASSIFICATION  
Light-duty ————— Unimproved dirt —————

GODMAN SPRING, WASH.—OREG.  
N4600—W11745/7.5

1967  
PHOTOREVISED 1983  
DMA 2476 III SE—SERIES 5981

RETURN TO :  
USGS AND HISTORICAL MAP ARCHIVES

DEC 15 1986