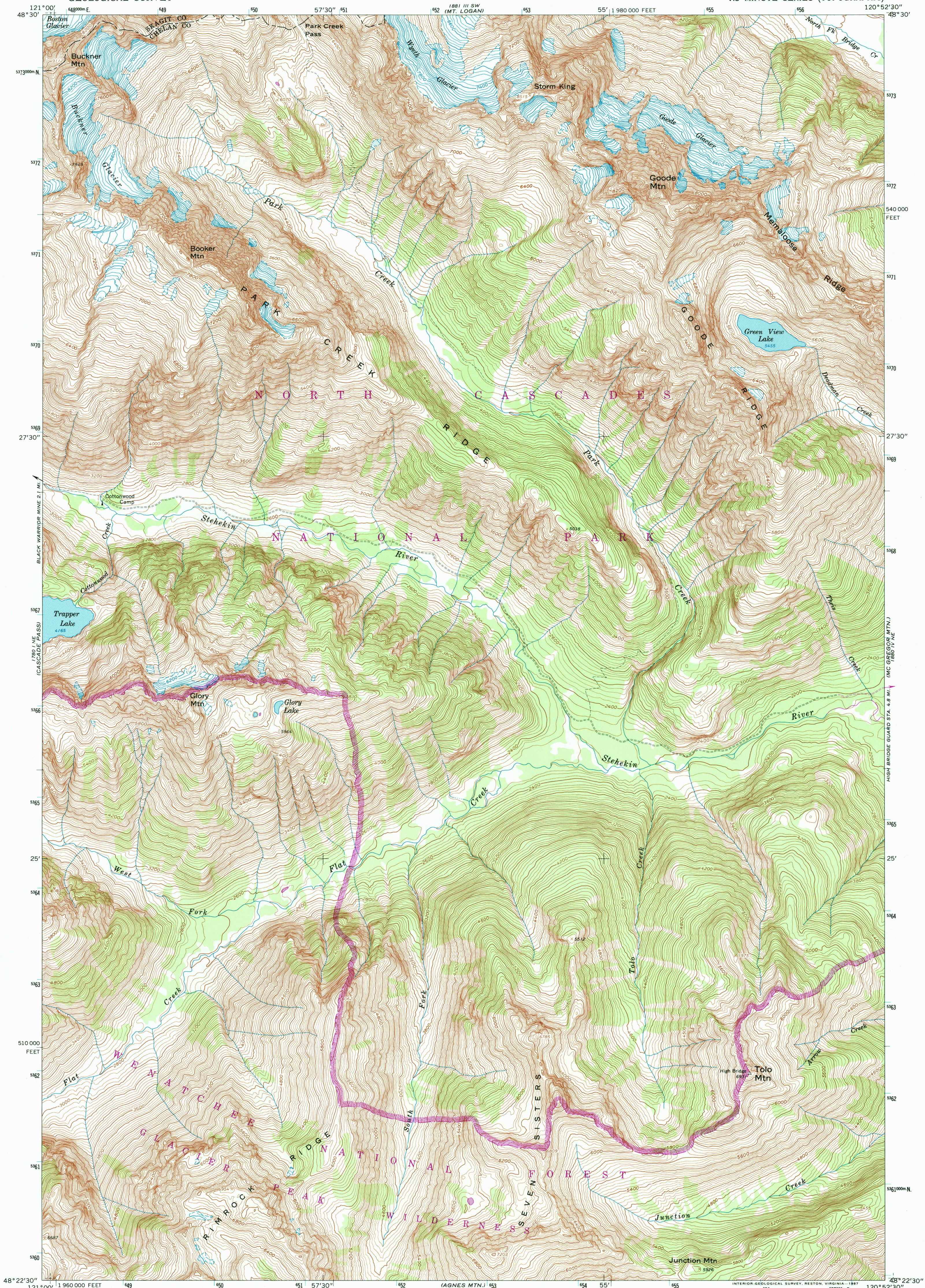


UNITED STATES
DEPARTMENT OF THE INTERIOR
GEOLOGICAL SURVEY

GOODE MTN. QUADRANGLE
WASHINGTON
7.5 MINUTE SERIES (TOPOGRAPHIC)



Mapped, edited, and published by the Geological Survey

Control by USGS and NOS/NOAA

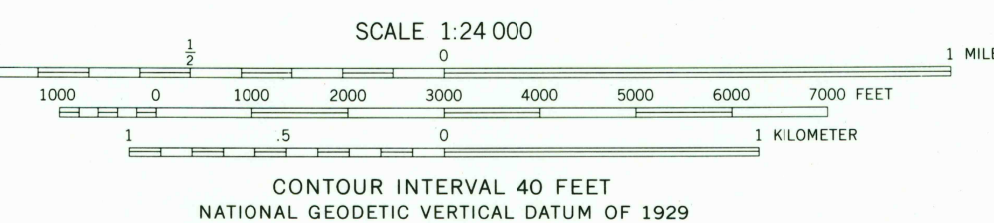
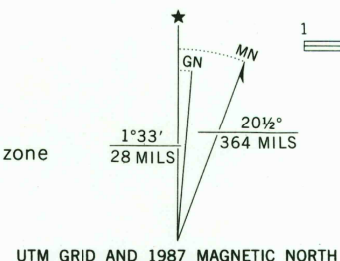
Topography by photogrammetric methods from aerial photographs taken 1958. Field checked 1963

Polyconic projection. 1927 North American Datum
10,000-foot grid based on Washington coordinate system, north zone
1000-meter Universal Transverse Mercator grid ticks,
zone 10, shown in blue

Land lines have not been established in this area

There may be private inholdings within the boundaries
of the National or State reservations shown on this map

To place on the predicted North American Datum 1983
move the projection lines 21 meters north and
89 meters east as shown by dashed corner ticks



FOR SALE BY U. S. GEOLOGICAL SURVEY
DENVER, COLORADO 80225, OR RESTON, VIRGINIA 22092
A FOLDER DESCRIBING TOPOGRAPHIC MAPS AND SYMBOLS IS AVAILABLE ON REQUEST



ROAD CLASSIFICATION
Unimproved dirt =====

GOODE MTN., WASH.
48120-D8-TF-024

1963
PHOTOREVISED 1987
DMA 1880 IV NW-SERIES V891

