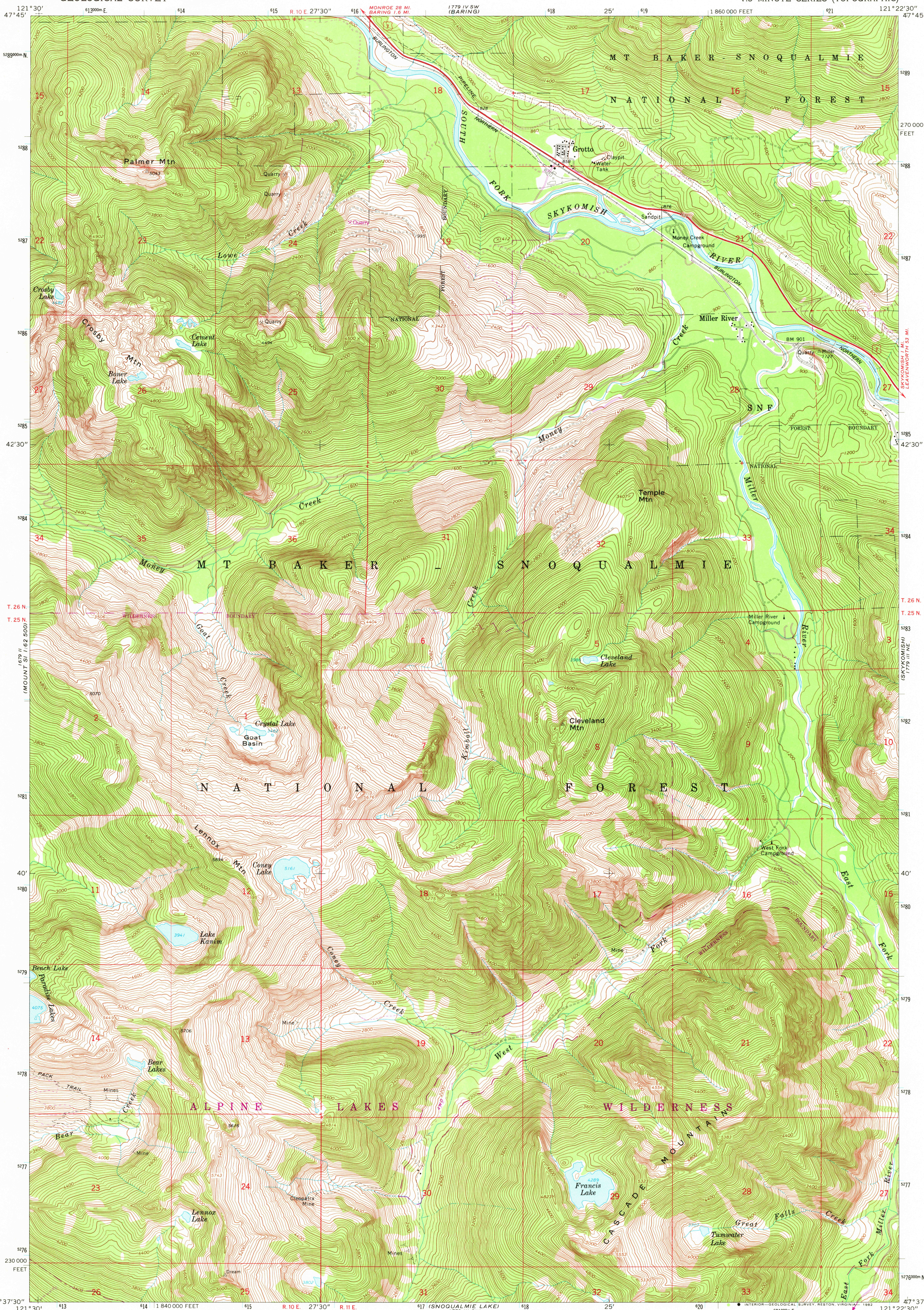


UNITED STATES
DEPARTMENT OF THE INTERIOR
GEOLOGICAL SURVEY

GROTTO QUADRANGLE
WASHINGTON—KING CO.
7.5 MINUTE SERIES (TOPOGRAPHIC)



Mapped, edited, and published by the Geological Survey

Control by USGS and NOS/NOAA

Topography by photogrammetric methods from aerial photographs taken 1958. Field checked 1965

Polycyclic projection. 1927 North American datum

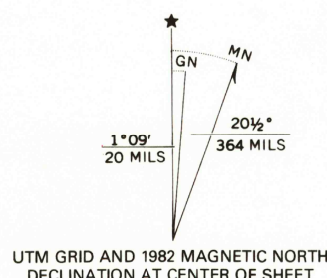
10,000-foot grid based on Washington coordinate system, north zone

1000-meter Universal Transverse Mercator grid ticks, zone 10, shown in blue

To place on the predicted North American Datum 1983, move the projection lines 22 meters north and 91 meters east as shown by dashed corner ticks

Where omitted, land lines have not been established

There may be private inholdings within the boundaries of the National or State reservations shown on this map



SCALE 1:24 000

1 1000 0 1000 2000 3000 4000 5000 6000 7000 FEET

1 0 1 2 3 4 5 6 7 8 9 10 KILOMETER

CONTOUR INTERVAL 40 FEET
DOTTED LINES REPRESENT 20-FOOT CONTOURS
NATIONAL GEODETIC VERTICAL DATUM OF 1929

FOR SALE BY U. S. GEOLOGICAL SURVEY, DENVER, COLORADO 80225, OR RESTON, VIRGINIA 22092
A FOLDER DESCRIBING TOPOGRAPHIC MAPS AND SYMBOLS IS AVAILABLE ON REQUEST



Heavy-duty Light-duty

Unimproved dirt

U. S. Route

GROTTO, WASH.

N4737.5—W12122.5/7.5

1965
PHOTOREVISED 1982
DMA 1779 III NW—SERIES V891

Revisions shown in purple compiled by the U. S. Forest Service from aerial photographs taken 1979 and other source data. This information is not field checked. Map edited 1982

RETURN TO:
USGS AND HISTORICAL MAP ARCHIVES

JAN 1 1983