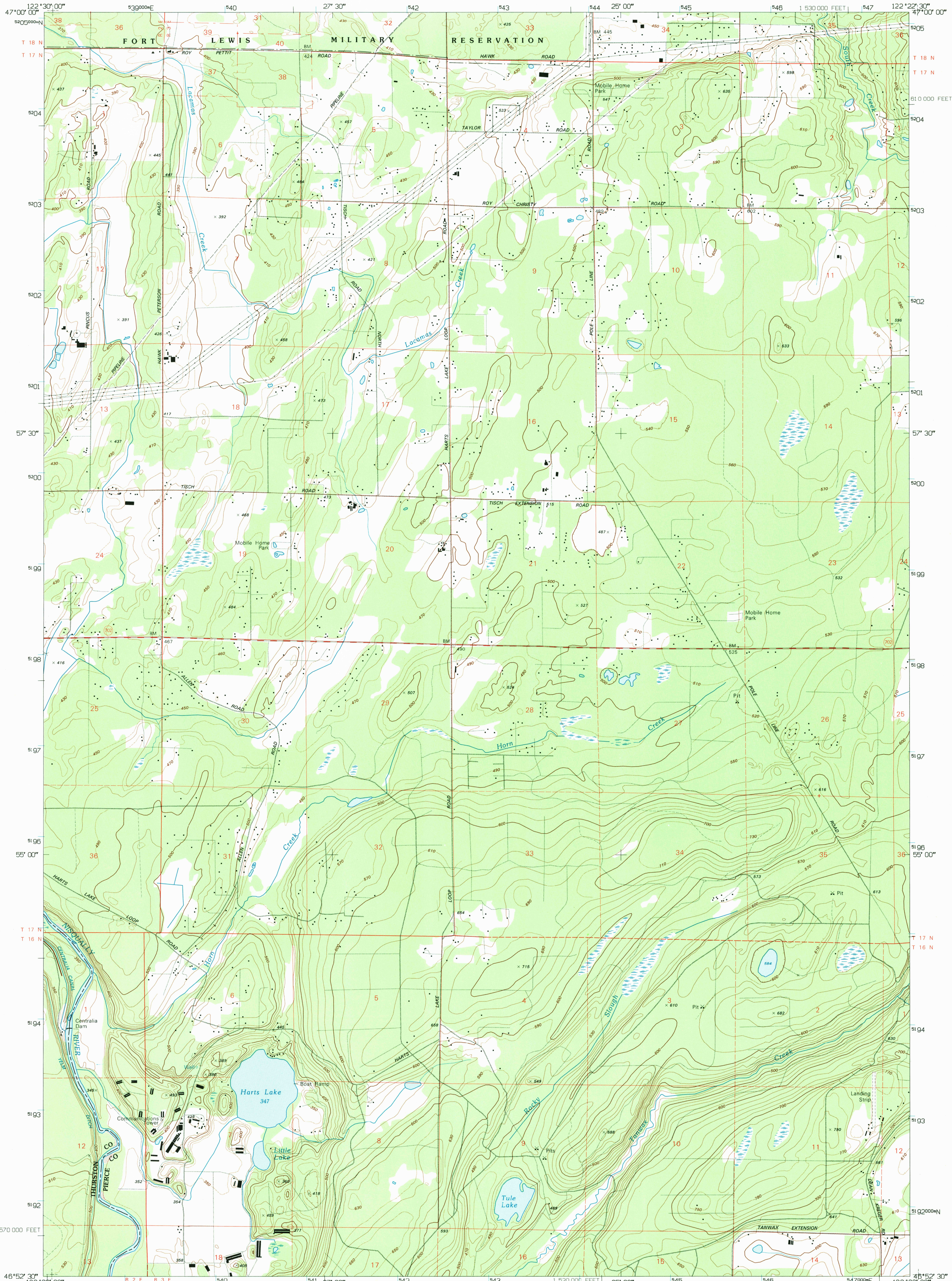
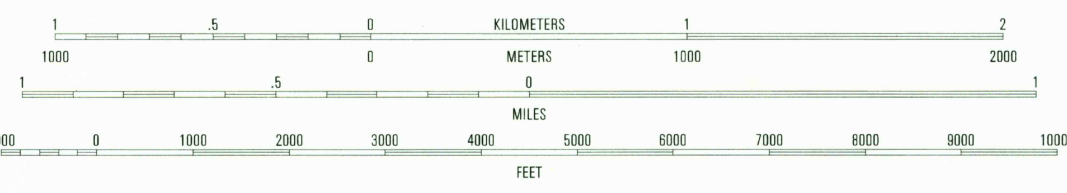
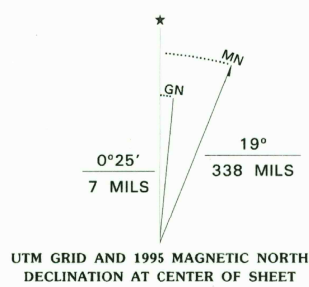


UNITED STATES
DEPARTMENT OF THE INTERIOR
GEOLOGICAL SURVEY

HARTS LAKE QUADRANGLE
WASHINGTON
7.5-MINUTE SERIES (TOPOGRAPHIC)



Produced by the United States Geological Survey
Control by USGS, NOS/NOAA and USCE
Compiled from imagery dated 1997. Revised from imagery dated 1990. PLSS and survey control current as of 1999.
Map edited 1995. Contours and land elevations have not been revised and may conflict with other content.
North American Datum of 1927 (NAD 27). Projection and blue 1000-meter ticks: Universal Transverse Mercator, zone 10 10 000-foot ticks: Washington Coordinate System, south zone North American Datum of 1983 (NAD 83) is shown by dashed corner ticks. The values of the shift between NAD 27 and NAD 83 for 7.5-minute intersections are obtainable from National Geodetic Survey NADCON software.
There may be private inholdings within the boundaries of the National or State reservations shown on this map.



SCALE 1:24 000
CONTOUR INTERVAL 20 FEET
SUPPLEMENTARY CONTOUR INTERVAL 10 FEET
NATIONAL GEODETTIC DATUM OF 1929
TO CONVERT FEET TO METERS MULTIPLY BY 0.3048
TO CONVERT METERS TO FEET MULTIPLY BY 3.2808
THIS MAP COMPLIES WITH NATIONAL MAP ACCURACY STANDARDS
FOR SALE BY U.S. GEOLOGICAL SURVEY
DENVER, COLORADO 80225, OR RESTON, VIRGINIA 22092
A FOLDER DESCRIBING TOPOGRAPHIC MAPS AND SYMBOLS IS AVAILABLE ON REQUEST



ROAD CLASSIFICATION
Primary highway
hard surface
Secondary highway
hard surface
Unimproved road
Light-duty road, hard or
improved surface
Interstate Route
U.S. Route
State Route

1	2	3	1 Fort Lewis
4	5	2 Spanaway	3 Frederickson
6	7	4 McKenna	5 Tanwax Lake
		6 Lake Lawrence	7 Bald Hill
		8 Eatonville	

HARTS LAKE, WA
46122-H4-TF-024

1990

DMA 157 IV NW-SERIES V891

