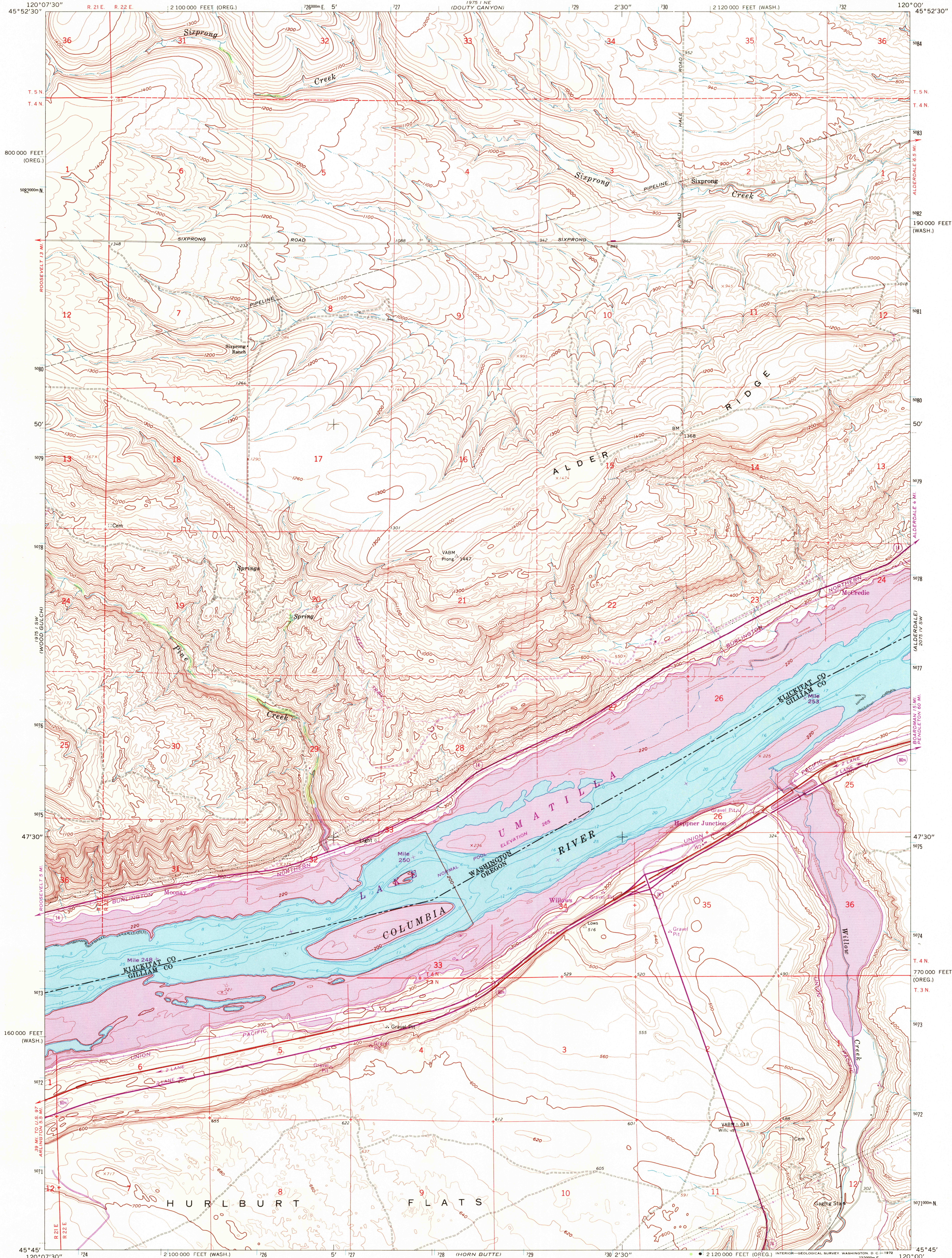


UNITED STATES
DEPARTMENT OF THE INTERIOR
GEOLOGICAL SURVEY

HEPPNER JUNCTION QUADRANGLE
WASHINGTON-OREGON
7.5 MINUTE SERIES (TOPOGRAPHIC)



Mapped, edited, and published by the Geological Survey

Control by USGS and USC&GS

Topography by photogrammetric methods from aerial photographs taken 1958. Field checked 1962

Selected hydrographic data compiled from USC&GS Chart 6160 (1961)

This information is not intended for navigational purposes

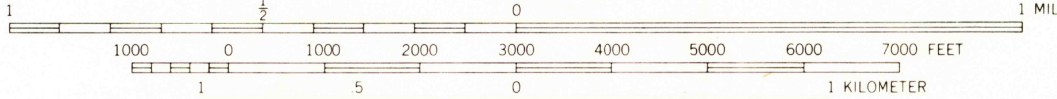
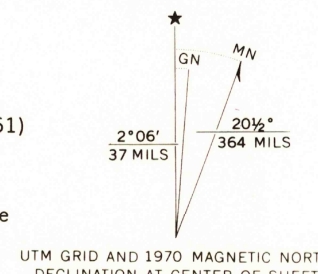
Polyconic projection. 1927 North American datum

10,000-foot grids based on Washington coordinate system, south zone and Oregon coordinate system, north zone

1000-meter Universal Transverse Mercator grid ticks, zone 10, shown in blue

Fine red dashed lines indicate selected fence lines

Revisions shown in purple compiled from aerial photographs taken 1970. This information not field checked



CONTOUR INTERVAL 20 FEET
DOTTED LINES REPRESENT 10-FOOT CONTOURS
DATUM IS MEAN SEA LEVEL
DEPTH CURVES AND SOUNDINGS IN FEET—DATUM IS LOW WATER
GRADIENT ESTABLISHED BY CORPS OF ENGINEERS



ROAD CLASSIFICATION
Heavy-duty ——— Light-duty ———
Medium-duty ——— Unimproved dirt ———
Interstate Route ——— State Route ———

HEPPNER JUNCTION, WASH.-OREG.
N4545—W12000/7.5

1962
PHOTOREVISED 1970
AMS 1975 I SE—SERIES V891

USGS
HISTORICAL FILE
TOPOGRAPHIC DIVISION

JAN 3 1972

3/10