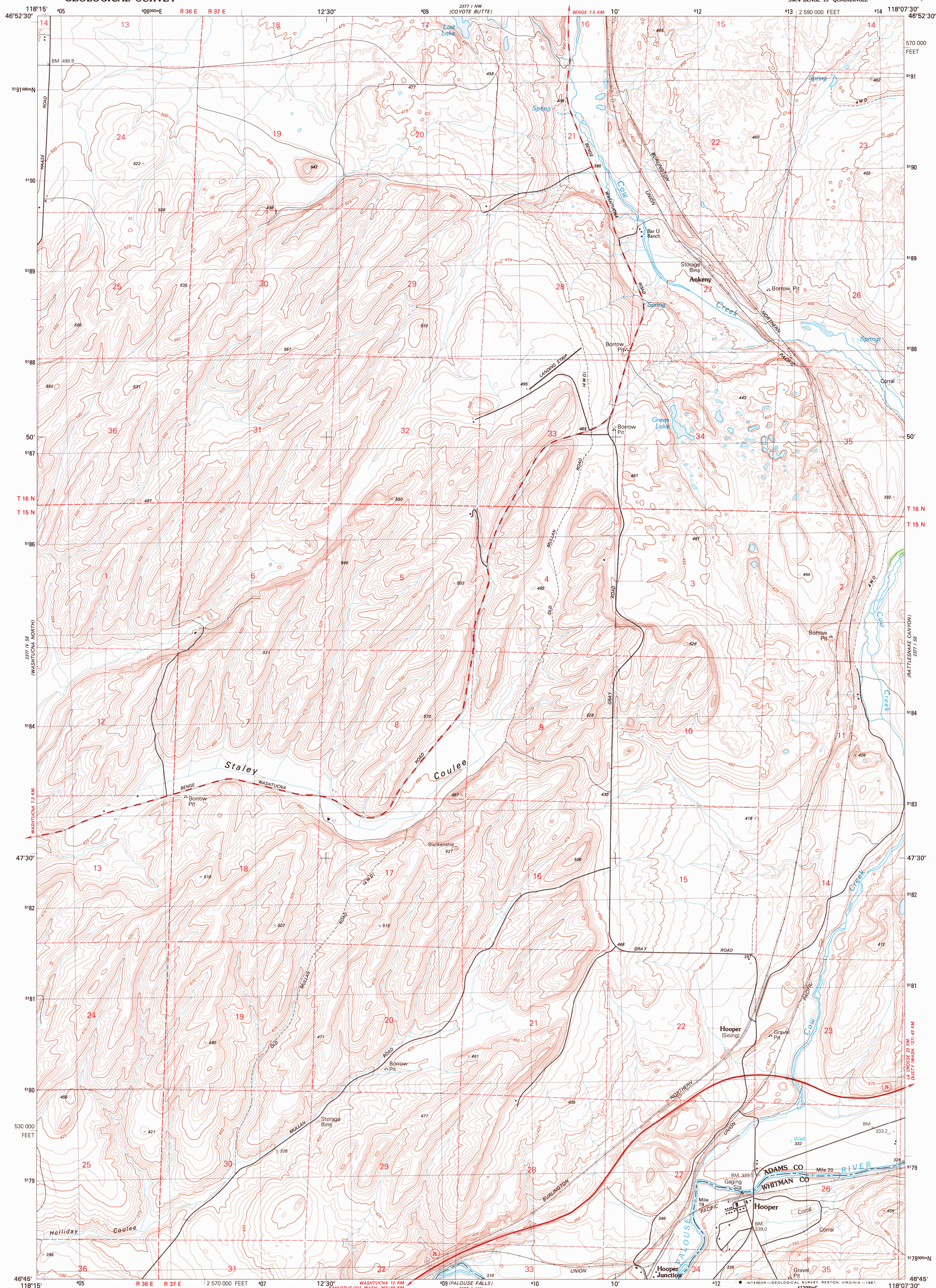


2377 I NW
(COYOTE BUTTE)

UNITED STATES
DEPARTMENT OF THE INTERIOR
GEOLOGICAL SURVEY

HOOPER QUADRANGLE
WASHINGTON
7.5 MINUTE SERIES (TOPOGRAPHIC)
SW/4 BENGEE 15' QUADRANGLE

2377 I NE
(BENGEE)



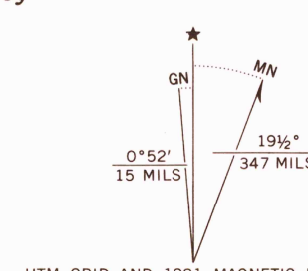
Produced by the United States Geological Survey

Control by USGS and NOS/NOAA

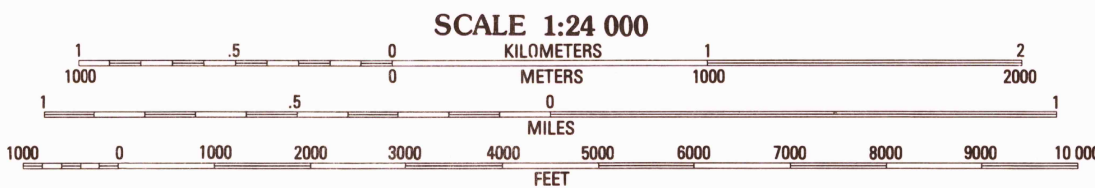
Compiled by photogrammetric methods from aerial
photographs taken 1975. Field checked 1976
Map edited 1981

Projection and 1000-meter grid, zone 11
Universal Transverse Mercator
10,000-foot grid ticks based on Washington coordinate
system, south zone. 1927 North American Datum
To place on the predicted North American Datum 1983
move the projection lines 17 meters north and
82 meters east as shown by dashed corner ticks

Fine red dashed lines indicate selected fence and field lines
where generally visible on aerial photographs
This information is unchecked



UTM GRID AND 1981 MAGNETIC NORTH
DECLINATION AT CENTER OF SHEET



SCALE 1:24 000
KILOMETERS
METERS
MILES
FOOT

THIS MAP COMPLIES WITH NATIONAL MAP ACCURACY STANDARDS
FOR SALE BY U. S. GEOLOGICAL SURVEY, DENVER, COLORADO 80225, OR RESTON, VIRGINIA 22092
A FOLDER DESCRIBING TOPOGRAPHIC MAPS AND SYMBOLS IS AVAILABLE ON REQUEST



QUADRANGLE LOCATION
CONTOURS AND ELEVATIONS
IN METERS

ROAD CLASSIFICATION	
Primary highway, hard surface	Light-duty road, hard or improved surface
Secondary highway, hard surface	Unimproved road
Interstate Route	U. S. Route
	State Route

HOOPER, WASH.
SW/4 BENGEE 15' QUADRANGLE
N4645-W11807.5/7.5

1981

DMA 2377 I SW-SERIES V891

AUG 3 1981

2000
USGS
HISTORICAL FILE
NATIONAL MAPING DIVISION