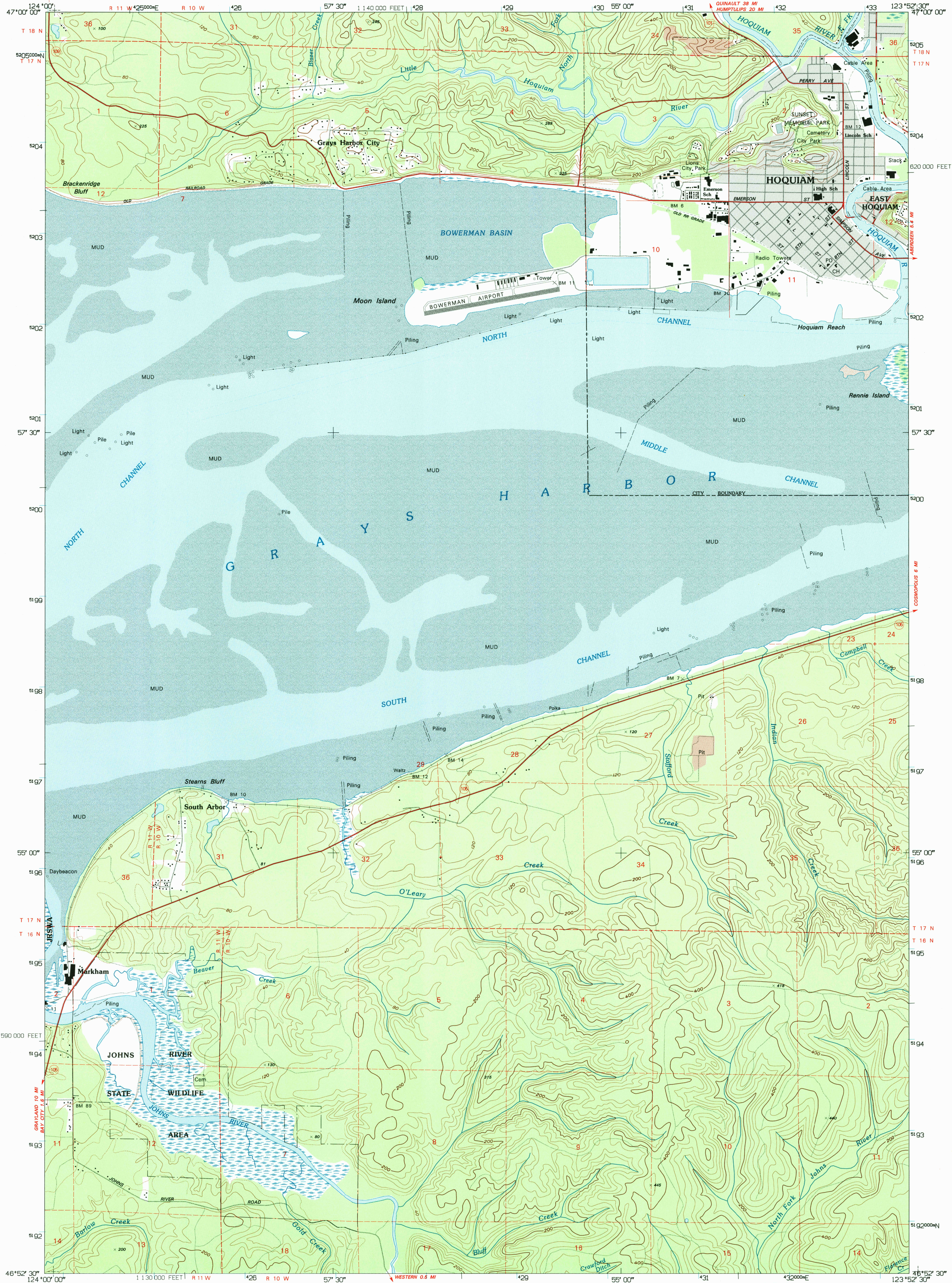
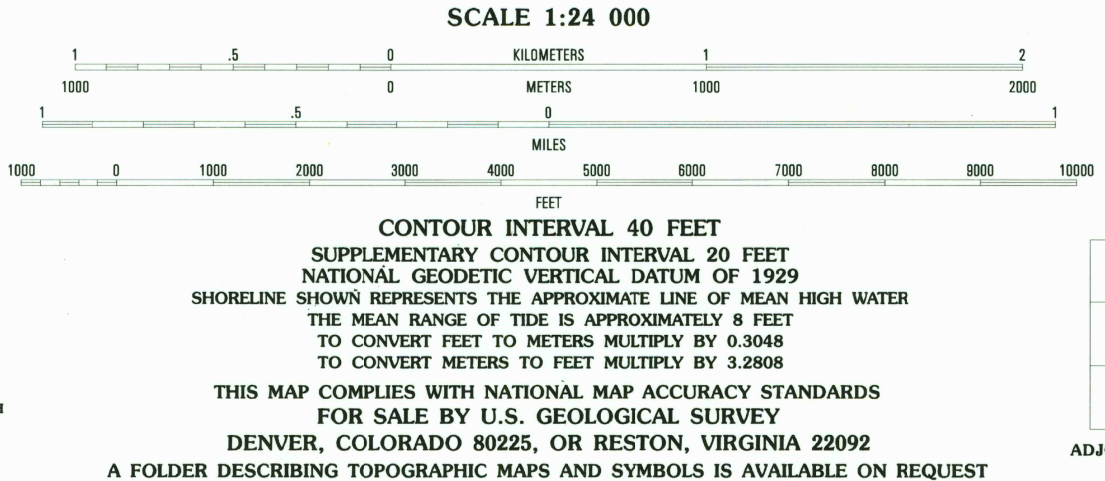
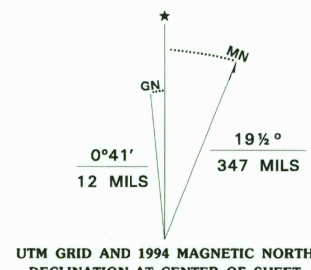


UNITED STATES  
DEPARTMENT OF THE INTERIOR  
GEOLOGICAL SURVEY

HOQUIAM QUADRANGLE  
WASHINGTON-GRAYS HARBOR CO.  
7.5 MINUTE SERIES (TOPOGRAPHIC)



Produced by the United States Geological Survey  
Control by USGS, NOS/NOAA, and USCE  
Compiled from aerial photographs taken 1950. Field checked 1957  
Revised from aerial photographs taken 1940 and other sources.  
Map edited 1994. Contours and land elevations have not been  
revised and may conflict with other content  
North American Datum of 1927 (NAD 27). Projection and  
blue 1000-meter ticks: Universal Transverse Mercator, zone 10  
10 000-foot ticks: Washington Coordinate System, south zone  
North American Datum of 1983 (NAD 83) is shown by dashed  
corner ticks. The values of the shift between NAD 27 and  
NAD 83 for 7.5-minute sections are obtainable from  
National Geodetic Survey NADCON Software  
There may be private inholdings within the boundaries of  
the National or State reservations shown on this map



QUADRANGLE LOCATION

1	2	3	1 Copalis Crossing
4	5	2 New London	
6	7	3 Aberdeen Gardens	
		4 Westport	
		5 Aberdeen	
		6 Grayland	
		7 Western	
		8 Aberdeen SE	

ADJOINING 7.5' QUADRANGLE NAMES

INTERIOR - GEOLOGICAL SURVEY, RESTON, VIRGINIA - 1994  
ROAD CLASSIFICATION  
Primary highway ..... Light-duty road, hard or  
hard surface ..... improved surface .....  
Secondary highway ..... Unimproved road .....  
Interstate Route ..... U.S. Route ..... State Route .....

HOQUIAM, WA  
46123-H8-TF-024

1957  
REVISED 1994  
DMA 1277 IV NW-SERIES V891

