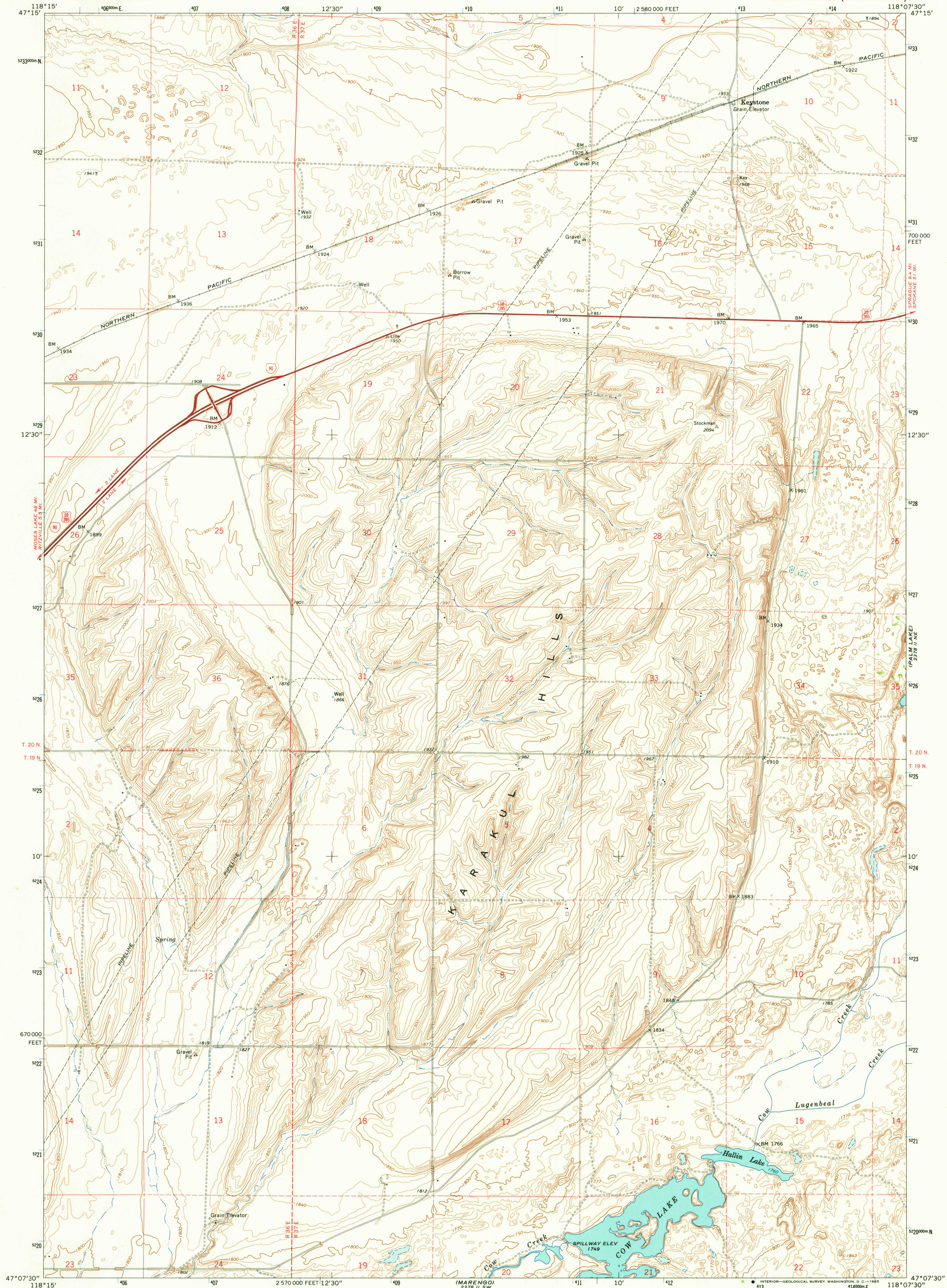
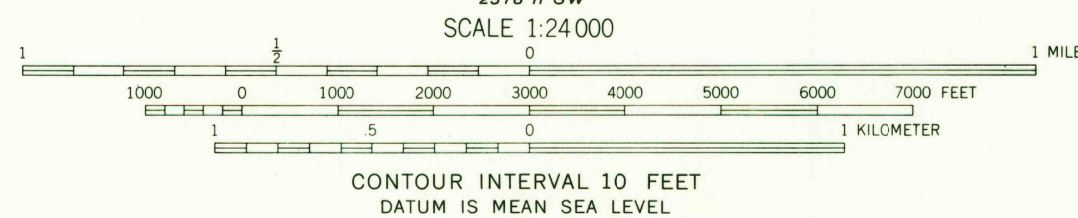
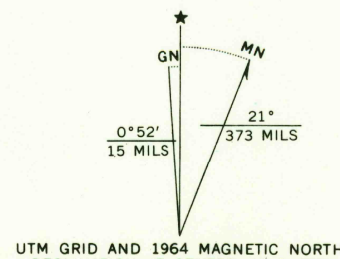


UNITED STATES
DEPARTMENT OF THE INTERIOR
GEOLOGICAL SURVEY

KARAKUL HILLS QUADRANGLE
WASHINGTON-ADAMS CO.
7.5 MINUTE SERIES (TOPOGRAPHIC)



Mapped, edited, and published by the Geological Survey
Control by USGS and USC&GS
Topography by photogrammetric methods from aerial photographs taken 1960. Field checked 1964
Polyconic projection. 1927 North American datum
10,000-foot grid based on Washington coordinate system, south zone
1000-meter Universal Transverse Mercator grid ticks, zone 11, shown in blue
Where omitted, land lines have not been established
Fine red dashed lines indicate selected fence lines



ROAD CLASSIFICATION
Heavy-duty ——— Light-duty ———
Unimproved dirt ———
Interstate Route U.S. Route

KARAKUL HILLS, WASH.
N4707.5-W11807.5/7.5

1964

AMS 2378 II NW-SERIES Y891

OCT 8 1965
2770

U.S.G.S.
FILE COPY
TOPOGRAPHIC DIVISION