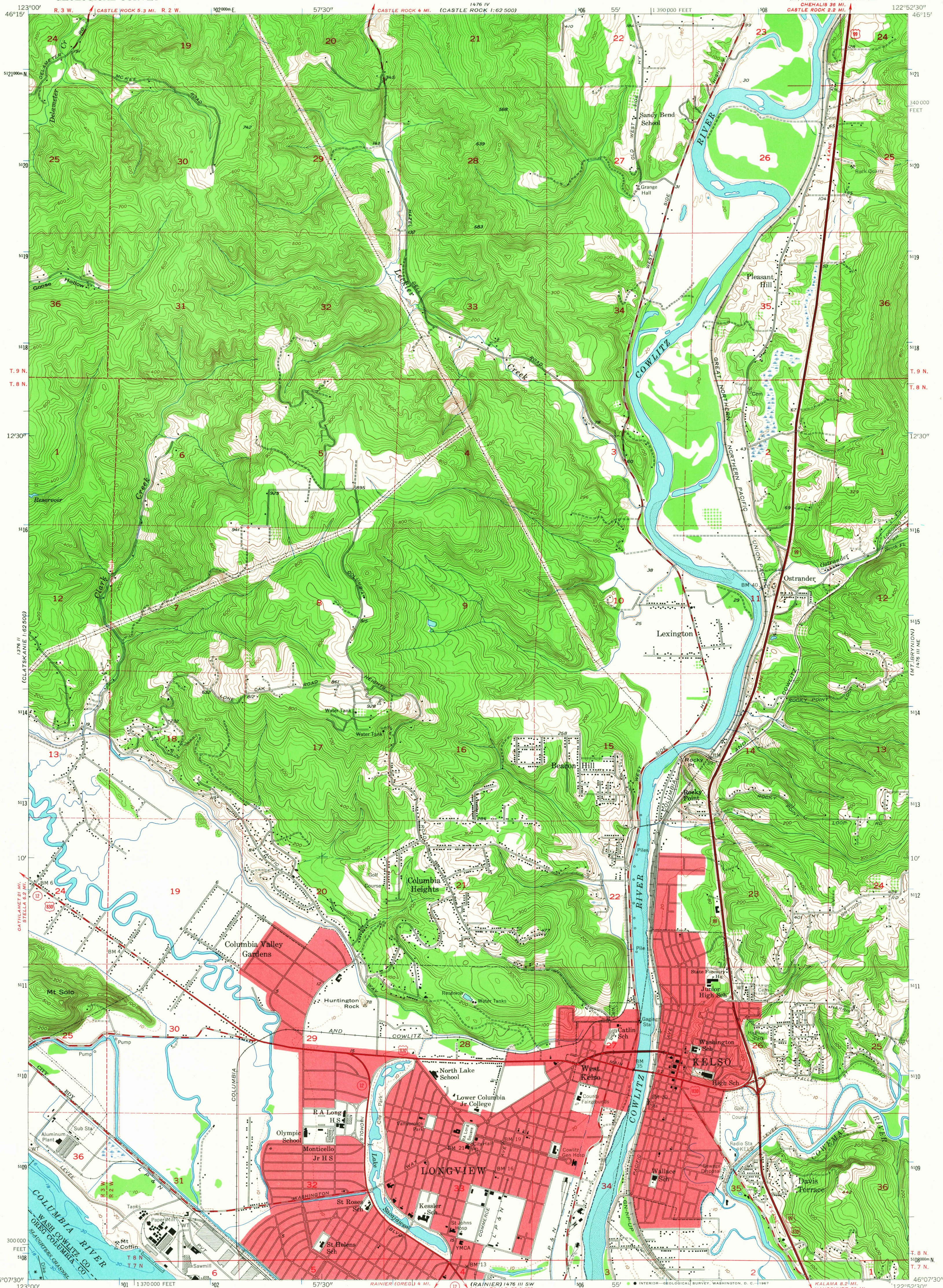


UNITED STATES  
DEPARTMENT OF THE INTERIOR  
GEOLOGICAL SURVEY

KELSO QUADRANGLE  
WASHINGTON—OREGON  
7.5 MINUTE SERIES (TOPOGRAPHIC)  
NW 1/4 KALAMA 15' QUADRANGLE  
CHEHALIS 36 MI.  
CASTLE ROCK 2.2 MI.



Mapped, edited, and published by the Geological Survey

Control by USGS and USC&GS

Topography from aerial photographs by Kelsh plotter methods and by plane-table surveys 1930 and 1953. Aerial photographs taken 1951

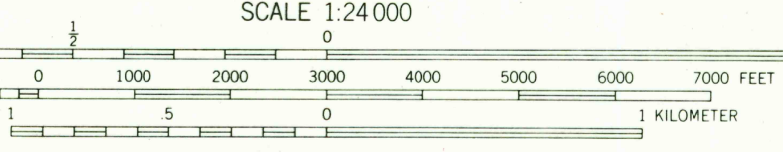
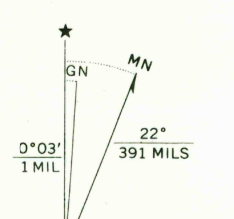
Hydrography compiled from USC&GS Chart 6153

Polyconic projection. 1927 North American datum  
10,000-foot grid based on Washington coordinate system, south zone

Dashed land lines indicate approximate locations

Unchecked elevations are shown in brown

Red tint indicates areas in which only landmark buildings are shown  
1000-meter Universal Transverse Mercator grid ticks,  
zone 10, shown in blue



CONTOUR INTERVAL 20 FEET  
DASHED LINES REPRESENT HALF INTERVAL CONTOURS  
DATUM IS MEAN SEA LEVEL  
DEPTH CURVES IN FEET—COLUMBIA RIVER DATUM  
SHORELINE SHOWN REPRESENTS THE APPROXIMATE LINE OF MEAN HIGH WATER  
THE AVERAGE RANGE OF TIDE IS APPROXIMATELY 5 FEET



ROAD CLASSIFICATION  
Heavy-duty ——— 4 LANE 6 LANE Light-duty ———  
Medium-duty ——— 4 LANE 6 LANE Unimproved dirt ———  
U.S. Route ——— State Route ———

KELSO, WASH.—OREG  
NW 1/4 KALAMA 15' QUADRANGLE  
N 4607.5—W 12252.5/7.5

1953

AMS 1476 III NW—SERIES V891

THIS MAP COMPLIES WITH NATIONAL MAP ACCURACY STANDARDS  
FOR SALE BY U.S. GEOLOGICAL SURVEY, DENVER, COLORADO 80225, OR WASHINGTON, D.C. 20242  
A FOLDER DESCRIBING TOPOGRAPHIC MAPS AND SYMBOLS IS AVAILABLE ON REQUEST

2675  
OCT 11 1967